

VACATIONLAND

PUBLISHED BY

Disneyland

FALL 1967





Dolly Madison Angel Food Cakes come highly recommended

Charlie Brown and the Peanuts gang have this to say about our angel food cake: *Yummy, tender, toothsome, moist, light, savory, so delicious. Everybody ought to take some home*





Letters from all over the world pour into Disneyland at an average of more than 1,500 per month, requesting information about the Magic Kingdom. The most-often-asked questions are answered by the facts on this page:



INFORMATION FOR YOUR VISIT TO DISNEYLAND

WHERE IS DISNEYLAND LOCATED?

Disneyland is located within the city of Anaheim, California, about 35 minutes by auto from downtown Los Angeles, via the Santa Ana Freeway southeast to Harbor Boulevard in Anaheim.

WHEN IS DISNEYLAND OPEN?

In the fall, winter and spring, September 18 through June 1, Disneyland is open 10 a.m. to 6 p.m., Wednesday thru Friday, and 10 a.m. to 7 p.m. Saturdays and Sundays — closed Mondays and Tuesdays. Except:

On Thanksgiving Day, November 23, and the day following, the Park is open 10 a.m. to midnight, and on November 25, 10 a.m. to 1 a.m.

December 16 through 23, Disneyland is open 10 a.m. to midnight. On Christmas Eve, it is open 10 a.m. to 6 p.m.; on Christmas Day, 10 a.m. to 7 p.m.; December 26 to 30, 9 a.m. to midnight; December 31, 9 a.m. to 7 p.m.; January 1, 10 a.m. to 9 p.m. and on January 2, 10 a.m. to 6 p.m.

On April 6, Disneyland is open 10 a.m. to 7 p.m. and on Easter Sunday, April 7, through April 13, the hours are 9 a.m. to midnight. April 15 and 16, Disneyland is open 10 a.m. to 6 p.m., after which, Disneyland goes back to its regular winter schedule.

During the summer season, the Park is open every day, 9 a.m. to midnight, Sundays through Thursdays, and to 1 a.m. on Fridays and Saturdays.

WHAT'S THE BEST WAY TO VISIT DISNEYLAND?

If you are a first-time visitor to Disneyland, we recommend the Guided Tour. It lasts approximately two hours and includes admission to six Disneyland adventures. After its completion, you will have plenty of time to enjoy the Park's many other attractions, exhibits, shows, shops, and restaurants.

For family groups we recommend the Disneyland Ticket Books, for maximum thrift and enjoyment. Two types of Ticket Books are available. They are the BIG 10 and the DELUXE 15. The BIG 10 includes admission and a choice of 10 Disneyland adventures and attractions. The DELUXE 15 includes a choice of 15 Disneyland adventures and attractions.

	Adult	Junior (12-17)	Child (3-11)
Big 10 Book	\$4.50	\$4.00	\$3.50
Deluxe 15 Book	5.50	5.00	4.50
Guided Tour	6.50	6.50	3.50
General Admission	3.00	2.50	.75

HOW LONG SHOULD YOU PLAN TO STAY?

Disneyland is designed so that you can enjoy a complete visit to the Magic Kingdom for only a few hours, or several days. Most visitors explore its five lands at least five hours or more.

If you wish overnight accommodations, the modern 616-room Disneyland Hotel, official hotel of the

Park, is located on West Street, directly across the street from the parking lot exit. There also is a coffee shop, restaurant, shopping area, and 40-acre golf center. For reservations write: Disneyland Hotel, Anaheim.

DOES DISNEYLAND HAVE DINING FACILITIES?

Disneyland has more than twenty fine restaurants and refreshment centers. In addition, there is a coffee shop and the Gourmet Restaurant at the Disneyland Hotel, which can be reached via Monorail or by free tram from Disneyland's Entrance.

IS DISNEYLAND SERVED BY PUBLIC TRANSPORTATION

Yes, by various types, as listed below:

Bus — The Southern California Rapid Transit District, Gray Lines (Tour only), Pacific Greyhound Lines (Charter only), Aztec Bus Line in San Diego (Charter only), Union Pacific Railroad Bus (For Union Pacific passengers only).

Helicopter — Los Angeles Airways, from the L.A. airport to the Disneyland Hotel Heliport.

Limousine — Airport Coach Service and Gray Lines.

WHERE CAN YOU GET FURTHER DISNEYLAND INFORMATION?

Contact Guest Relations, Disneyland, Anaheim, California 92803. Phone (714) 533-4456 from Orange County or (213) 626-8605 from Los Angeles—Extension 733. Prices and Park hours subject to change without notice.

VACATIONLAND

Vol. 11, No. 3

FALL 1967

© 1967 WALT DISNEY PRODUCTIONS

Managing Editor • Jack Lindquist

Editor • Fritz Opel

Art Director • Phil Bauer

Photography • Charles Nichols

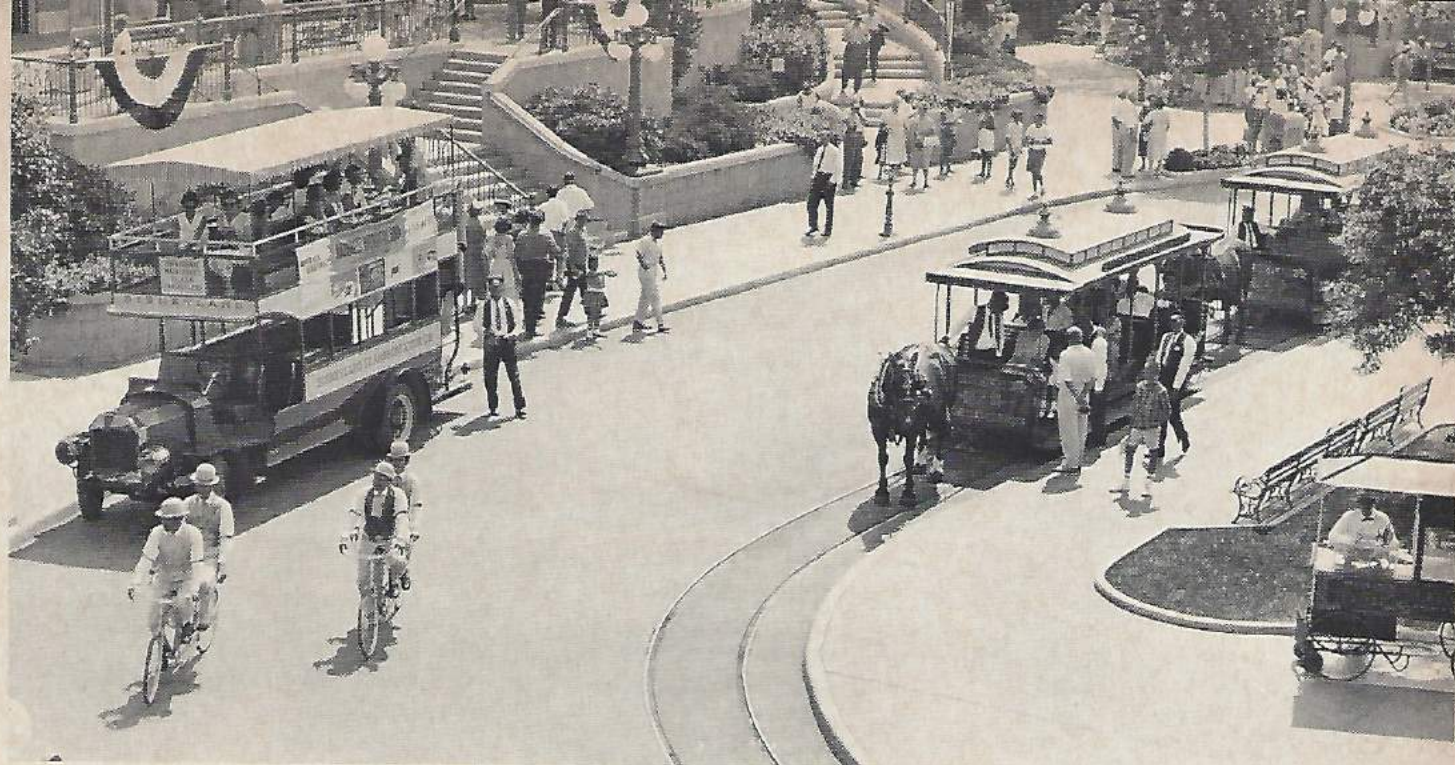
Advertising and

Circulation Manager • Frank Forsyth

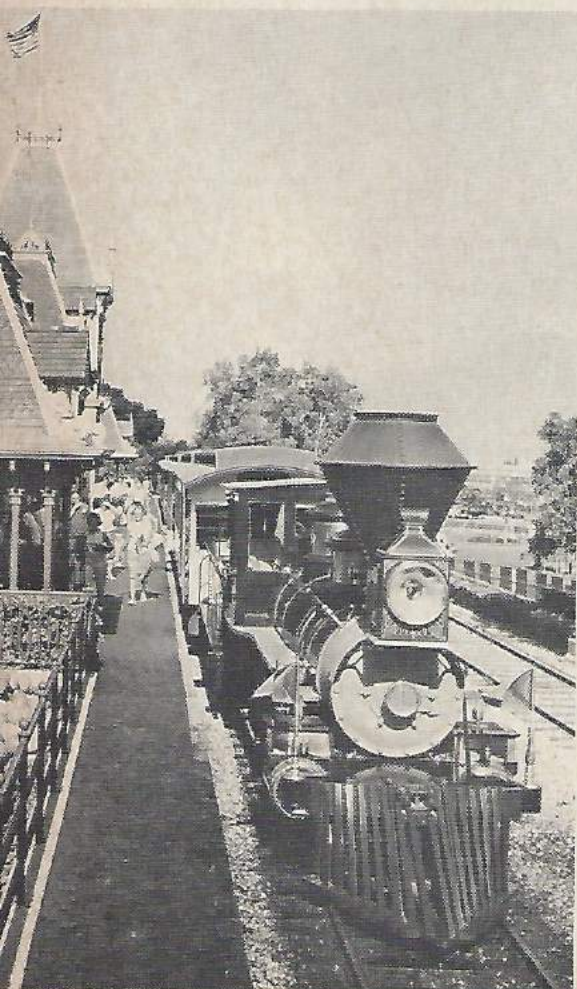
Vacationland is a service-feature magazine published three times yearly by the Marketing Division of Disneyland, a Division of Walt Disney Productions. Personally distributed through more than 1500 hotels, motels and leading tourist attractions and carriers, Vacationland is the only publication specifically directed to the vacationer and traveler in California, Arizona and Nevada.

All rights reserved. Reprint of material only upon written approval of Disneyland, 1313 Harbor Blvd., Anaheim, California 92803.

Advertising rates upon request.



The World of Disneyland is a World of Transportation



One would never think that Disneyland, the most fabulous entertainment center in the world, would feature an interwoven complex of nearly every kind of transportation conceived. There are transportation systems of the past, vehicles of the present day and transporters of the future.

The first vehicles Disneyland visitors come in contact with are the Main Gate trams, a series of bench-seat trailers pulled by tractor. The purpose of the tram is to ease the journey from far reaches of Disneyland's parking lot to the Main Gate.

From here, it is the Disneyland and Santa Fe Railroad, a 1/2-scale replica of the famous Iron Horse of the early 1900's which offers guests a grand circle tour of the Magic Kingdom.

Main Street, U.S.A. features turn-of-the-century surreys, omnibusses, trolleys and automobiles, all perfect replicas hauling passengers daily down the main thoroughfare of Disneyland.

At this point, beginning with Adventureland and traveling through the other lands of the Magic Kingdom, a visitor will see a variety of boats, rafts,

trains and even large ships, like the Columbia sailing ship or the Mark Twain Riverboat on Frontierland's Rivers of America, each providing the transportation means for an exciting water adventure.

Tomorrowland offers probably the most interesting transportation systems because these are the conveyances of the future.

The PeopleMover, one of the newest additions to Disneyland, is a series of four passenger cars traveling on an elevated guideway without stopping. Guests board from a continuously moving platform. Traveling to and through many of Tomorrowland's attractions, the PeopleMover gives guests a panoramic view of the whole Tomorrowland area. As a prototype of future systems, it may someday eliminate the need for stop signs or traffic signals in major cities.

Also in Tomorrowland is the Disneyland-Alweg Monorail, a sleek passenger train which travels through Disneyland, across the Disneyland parking lot and across the street to the Disneyland Hotel. The Park's three monorail trains, with a 106-people ca-



capacity each, make up the first passenger carrying monorail in America to operate daily.

The Automobile, the futuristic transportation in Monsanto's Adventure thru Inner Space, travels through a Mighty Microscope and into the world of the atom and molecule providing an unusual "shrinking" motion for its passengers.

Of course, Disneyland's new Tomor-

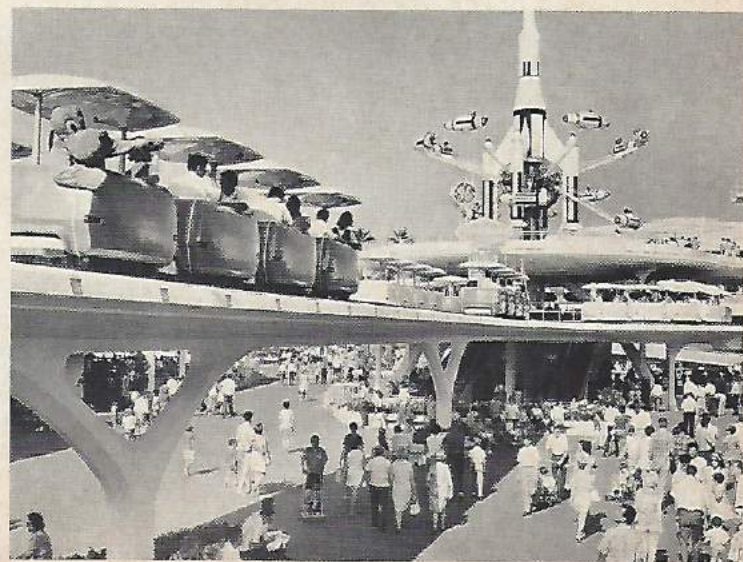
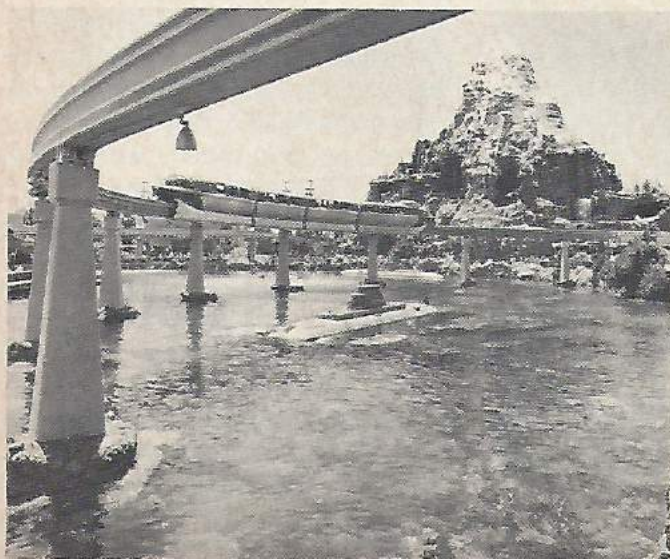
rowland would not be complete without rockets, and there are two. The first, a spinning Rocket Jet adventure, carries guests around a rocket ship hub, where they actually control their altitude and set up minor "G" forces.

The second is the McDonnell Douglas Flight to the Moon. Here, visitors "blast off" into space and experience a feeling of weightlessness as they leave Earth's gravitational pull. Soon

passengers find themselves in lunar orbit, watching a moon exploration party at work.

From here, it's back to Main Street, U.S.A., and finally, "today land," where the Disneyland visitor experiences a ride on one of the most popular transportation systems ever as he leaves the Park, the mid-twentieth century automobile.

Tomorrowland's Monorail . . . and PeopleMover transportation systems.



Winter in Vacationland



A Time of Year When the Southland Becomes the Most Versatile Vacation Spot in the World.

Excellent skiing, tobogganing and lots of snow are winter highlights of the San Bernardino mountain regions, just two hours by car from Los Angeles. Two Big Bear ski resorts, Snow Summit and Rebel Ridge, have facilities for making snow on warmer winter days (below).

The first snowfall in Vacationland—a time when thoughts of skiing and tossing snowballs stir the blood, and the Southland becomes the most versatile playground in the world! Snow powdered slopes in the high mountains attract thousands of skiers daily while the warm beaches and inland areas continue to play host to swimmers, golfers and those who have come to escape the snow.

In California's San Bernardino mountains, just two hours from the Pacific Ocean, some of the nation's best skiing can be found. The city of Big Bear has three choice resorts to choose from, two of which have facilities for "making" snow during warmer weather. Snow Summit, Rebel Ridge Ski Resort and Moon Ridge Mountain Estates offer miles of ski slopes for both the beginner and expert, with several ski lifts, one of which carries

skiers and sightseers 8,300 feet to the top of Big Bear's highest summit. Several nearby lodges provide the perfect after-skiing atmosphere, with warm drinks and food, a blazing fire and relaxing entertainment.

Lake Arrowhead, a small town in the mountains between San Bernardino and Big Bear, is renowned for its alpine atmosphere, interesting shops and restaurants. And, the area around Arrowhead has many slopes, perfect for tobogganing or sledding enthusiasts.

Northern California also has many fine resorts and ski areas, and with the recent "boom" of skiing and other winter sports, several new areas are being developed. Currently, the Disney organization is in the research and planning stages of a ski resort and Alpine village in the Mineral King Valley, an excellent ski area, centrally

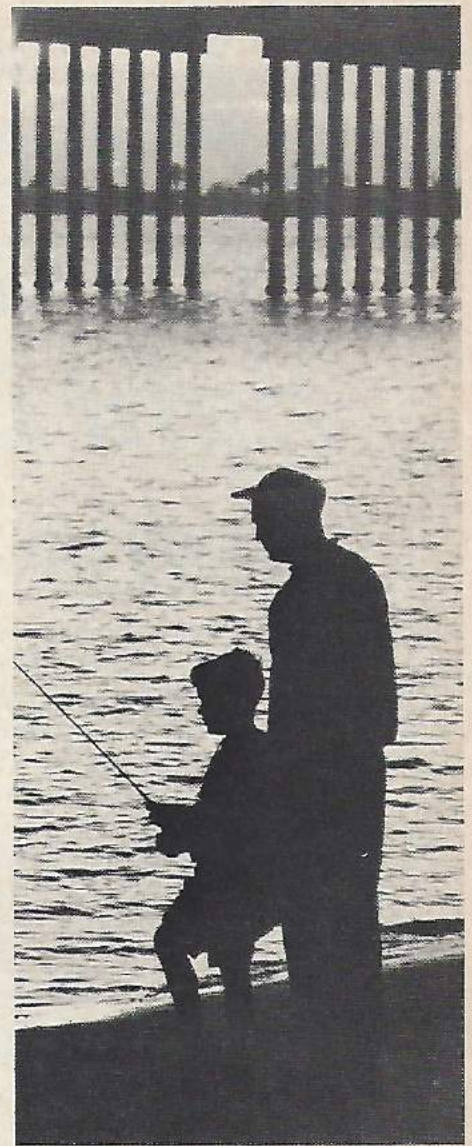




The Pacific Ocean is a favorite fun spot during the winter in Vacationland, with boating, swimming, and surfing among the most popular pastimes.



Several areas along the coast, such as San Diego's Mission Bay, are favorites among anglers.



located between San Francisco and Los Angeles.

Down from the mountains, the Palm Springs, Los Angeles and beach areas are warm and perfectly suited for warm weather outdoor sports.

Along with Southern California, Arizona and Nevada have long been recognized as warm, almost tropical, winter fun spots. Vacationers from the Midwest and East come to escape the snow and enjoy golfing, swimming, dude "ranching," sunbathing and a variety of other recreational and entertainment activities.

Phoenix, Arizona, is a very popular area, with a year 'round dry and warm climate. Las Vegas, Nevada, is another famous fun spot, where the excitement of gaming and star-studded stage shows can be added to Vacationland's list of warm winter fun.



With hundreds of courses to challenge, golfing is one of the most popular winter sports in the Vacationland area.

Only one Disneyland attraction lets you off right in your own home town.



United, the Official Airline of Disneyland, flies you home to more U.S. cities than any other airline.

We admit it's hard to follow such fun-filled wonders as Sleeping Beauty's Castle, the United-sponsored Enchanted Tiki Room, the Matterhorn, or the Jungle River Cruise. But the perfect way to top off your vacation is a flight back home in the friendly skies of United.

On the way home dig into a hearty meal and sip your favorite beverages. Plug in on some stereo entertainment . . . enjoy all of United's famous "extra care." You'll be glad you came along for the ride.



fly
the
friendly skies
of
United.

"No, we can't ride again for 25¢."

Nature's Wonderland at Disneyland

The Beauty of America's Deserts Evolves from an Anaheim Orange Grove

When Disneyland opened to an eagerly awaiting public in 1955, 22 adventures and attractions (there are now more than 50) were presented for the first time, one of which was the Mine Train journey through Nature's Wonderland. As the first Mine Train pulled out of its Frontierland station, its load of "pioneers" were comfortably seated in railway cars to recall those long-forgotten days of mining and desert prospecting. The engineer headed his locomotive to-

ward the buttes and rock formations and told a story to his passengers: "A few years ago, this was all row after row of orange trees. Today . . . cactus, snakes, sagebrush, desert. *That's* progress for you."

One of the most popular, and beautiful, attractions in the Park, the Mine Train ride is based on elements of four Disney films, three of them Academy Award winners. *Beaver Valley*, *Bear Country*, *The Living Desert*, and *The Olympic Elk*, provided the inspiration for the seven-acre Nature's Wonderland.

So realistic are the more than 200 life-like animals, birds and reptiles that the migratory birds which fly over Disneyland have often attacked the animated ravens and owls. With its forest, desert and mountains, and with "Old Unfaithful Geyser" spouting water 70 feet in the air, Nature's Wonderland is indeed the early western wilderness, re-born for a later western civilization.

The last few minutes of the Mine Train Ride are perhaps the most beautiful moments of any Disneyland attraction, the Rainbow Caverns. Here is a series of underground chambers, lit only by dazzling ribbons of water cascading down cavern walls and into streams of red, blue, green, yellow and purple.

When Walt Disney envisioned this part of Nature's Wonderland he called in a noted scientist to determine if it could be done. The scientist proved that within a week all of the colors would turn to gray. Walt's reaction? "Well, it's kind of fun to do the impossible."

A few months later the Rainbow Caverns opened at Disneyland. Today, years after the completion, visitors can pick out six distinct and beautiful colors—none of them gray!



Early in its journey, the Mine Train passes Big Thunder, the largest waterfall in Disneyland.



After traveling safely through Bear Country . . .



. . . and Beaver Valley . . .



. . . things get rocky around the bend in Nature's Wonderland.



And Old Unfaithful erupts at the worst moment, as passengers on this train will attest.



At Pepsi-Cola's Golden Horseshoe Revue, comedian Wally Boag cracks up the audience every time.

A beautiful waltz done by the Golden Horseshoe Dancers.



Disneyland's Free Shows and Exhibits

Some of the Most Inspiring and Educational Attractions in Disneyland are Presented Entirely Free of Charge.

Walt Disney always believed that entertainment of educational value should be presented so that everyone is able to see it, and the Disneyland staff holds on to that important ideal today.

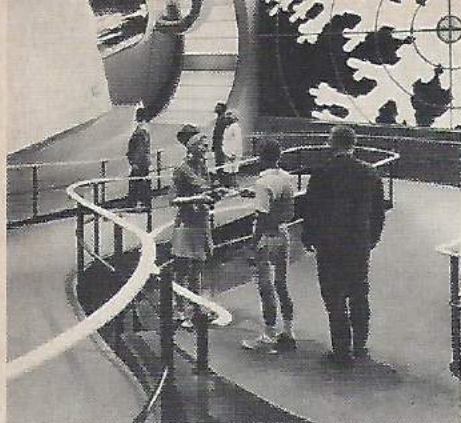
Since everything at Disneyland is set either in the past or the future, most of the free exhibits deal with history or things to come. Main Street, U.S.A. is a free show in itself — a perfect replica of a typical turn-of-the-century American town.

At Swift's Market House, guests see the general store of grandfather's day, with licorice sticks, button candy and



The Upjohn exhibit on Main Street, U.S.A., is a perfect re-creation of the typical turn-of-the-century pharmacy.





the familiar old pickle barrel. The Upjohn Pharmacy is an accurate recreation of an 1890-era drug store, with a display of liniments, cure-alls and crude surgical instruments. Guests can pick up free vitamins while visiting.

Other Main Street exhibits include the Eastman Kodak Center; INA's Carefree Corner, Disneyland's official information center; the C & H Sugar Corner; The Wurlitzer Music Hall, featuring a complete display of pianos and organs and many other attractions.

In Frontierland, it's back to the days of the old west as Pepsi-Cola's Golden Horseshoe Revue recreates the atmosphere of a typical "saloon," complete with a soft drink bar and a way-out vaudeville show. Five shows with singing, dancing and comedy entertainment are presented each day entirely free of charge.

Guests experience the future in Disneyland's new Tomorrowland, where the most fabulous of all the Park's free shows are located.

"America the Beautiful" is a motion picture tour of important scenic and historic locations in America, presented in an enlarged theatre that completely encircles the audience. The exhibit also displays telecommunications systems of the future, including the Picturephone, where you can see the person you are calling.

"Adventure thru Inner Space is a thrilling trip into the world of the molecule and the atom aboard Atomobiles — vehicles that give guests the illusion of "shrinking" as they travel through the attraction. Highlight of the adventure is a trip through a snowflake and into a world where the nucleus of a tiny oxygen atom appears as a giant sun.

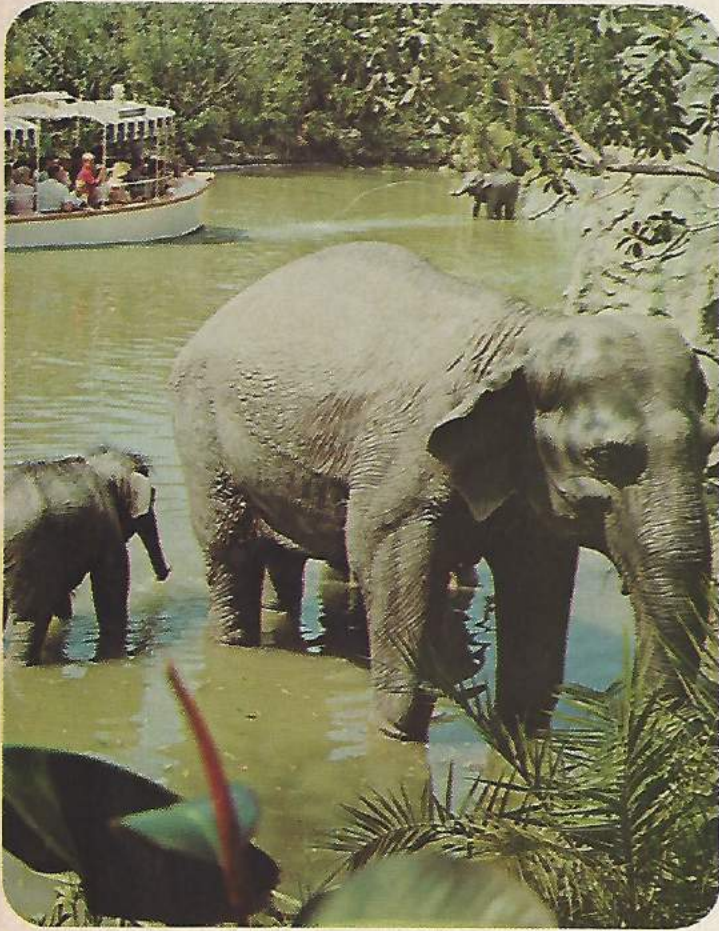
An "Audio-Animatronic" adventure, General Electric's Carousel of Progress, traces the contributions of electricity to our way of life through the past hundred years. Such eras as pre-electricity days and the world of today are shown. "Audio-Animatronics" is the Disney-designed process of animating life-like figures electronically.

One of the world's most advanced refreshment centers, Coca-Cola's Tomorrowland Terrace, is also a free show, featuring not only excellent food, but space-age service facilities, a futuristic climate control system and modern musical innovations daily.

Of course, there are many other elements of Disneyland that are free, like the fragrance of flowers, or the unusually clean and fresh atmosphere. But, perhaps the best of all is the excitement and happiness you feel, just visiting Walt Disney's Magic Kingdom ... "the Happiest Place on Earth."



The history of electricity is presented in General Electric's Carousel of Progress, above. Here, such eras as pre-electricity days, left, the 1920's, 1940's and the world of today are shown.





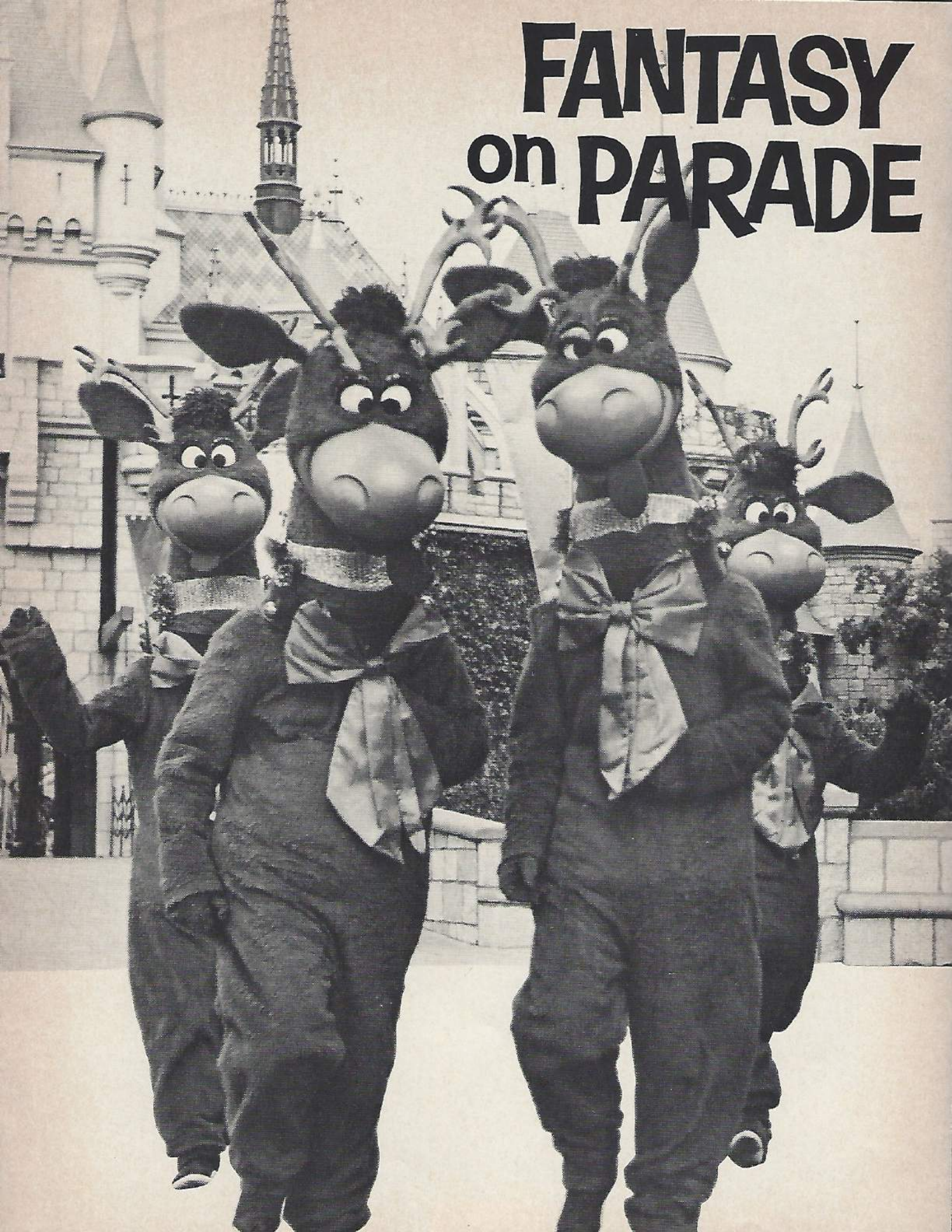
A VISIT TO *Disneyland*

is a never-to-be-forgotten
adventure for the young
and the young-at-heart
of all ages.

A variety of fun and fantasy
awaits the Disneyland guest
this year in the
Magic Kingdom which has
brought pleasure to more than
sixty million people
from all over the world.



FANTASY on PARADE



All new, and packed with excitement, the 1967 premiere of Walt Disney's Fantasy on Parade opens the Disneyland Christmas Season on Saturday night, December 16, at 9:00 p.m., with scores of Hollywood celebrities scheduled to attend.

During the following two weeks, through December 31, the parade will

be held twice daily on Main Street, U.S.A., at 3:00 and 9:00 p.m., except on December 24, 25, and 31, when there will be one parade daily, at 3:00 p.m.

Fantasy on Parade is a fresh, new approach to parading — a series of marching shows, starring the most colorful and humorous Disney characters ever created. Each of the 25 show units will pause frequently along the parade route to perform colorful dances and skits.

Peter Pan and Snow White, Mickey Mouse, Pluto, mammoth dolls, wooden soldiers, and a cigar-smoking, eight-foot rooster are among the many performers.

Another spectacular feature of Disneyland's Holiday Festival will be jet-propelled flights by the Bell Rocket Men. Using Bell Aerosystem rocket belts, pilots will fly above the rooftops in Tomorrowland four times daily.

More than 1,000 carolers also will take part in the Festival, presenting Disneyland's traditional Candlelight Procession and an hour of Christmas music on Sunday, December 17.

More than a year's work by the Disney organization went into the design and manufacture of new characters for Fantasy on Parade—translating sketches into three-dimensional performers, and creating a whole new

Continued next page



Parade . . . Cont'd

concept for a parade. Each unit is a show in itself.

Instead of the ordinary, uniformed bandmen, music for the parade will come from such units as Mary Poppins' Chimney Sweepers, a comic callope and the Toy Soldier Band.

Among the characters to be featured are the stars of Walt Disney's animated film, "Winnie The Pooh" — including Rabbit and Piglet, Kanga and Roo, Eeyore, Owl, and Pooh Bear, himself.

Santa Claus will be there, with his eight silly reindeer, joining the fun with a huge dancing caterpillar and ballerina-butterflies.

In addition to the twice daily parades, Disneyland will feature a wide range of special entertainment throughout the Christmas Season.

Magic Kingdom carolers, in their colorful Dickens costumes, musical shows, and dancing are among the many extra attractions.

And, to wrap up the 1967 holidays in a unique package, the world's biggest New Year's Eve party will be held in the Park, beginning at 8:00

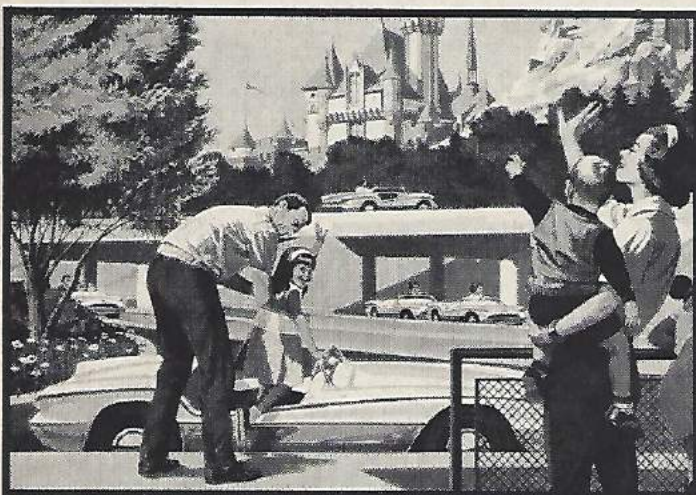


p.m. on Sunday, December 31.

Beginning December 13, Disneyland will be open every day through January 7.

Advance sale tickets for the New Year's Eve Party will be available at the Disneyland box office, all Desmond's stores and all Wallich's Music City stores from Thanksgiving through December 31. Tickets include unlimited use of Disneyland attractions (except shooting galleries), hats, noise-makers, and admission to all special entertainment areas.

Entertainment to help you "ring in



FOLLOW THE FUN . . . to Richfield's two Autopia freeways at Disneyland!

Treat your car to the "Official Gasoline of Disneyland" — Richfield *Imperial* Boron — The Mileage Maker. Two Richfield stations near Disneyland to serve you:

1340 South West Street, at Winston
1451 South West Street, at Katella (next to Disneyland Hotel)

RICHFIELD

Personally Conducted

SIGHT-SEEING TOURS



Take Gray Line to Disneyland, also plan to

see . . .

- MOVIE STUDIOS
- HOMES OF STARS
- FARMERS MARKET
- KNOTT'S BERRY FARM
- MARINELAND
- NIGHT CLUBS
- SUNSET STRIP
- MOVIELAND WAX MUSEUM

and ALL Southern California!

Ask your travel agent or hotel for free folders or call

481-2121

GRAY LINE SIGHT-SEEING TOURS

1207 W. 3rd Street
Los Angeles, Calif. 90017



the new" until 2:00 a.m. will include a Disneyland Humdinger, the Firehouse Five + 2, Bill Elliott and his Orchestra, the Young Men from New Orleans and the Royal Tahitian Dancers.

Disneyland will be open from 10 a.m. to midnight, December 16 through 23; 10 a.m. to 6 p.m., December 24; 10 a.m. to 7 p.m., December 25; 9 a.m. to midnight, December 26 through 30; 9 a.m. to 7 p.m., December 31; 10 a.m. to 9 p.m., January 1; and 10 a.m. to 6 p.m., January 2, after which Disneyland will return to its regular winter schedule.



TWO GREAT
NEW RESTAURANTS

THE GENTRY ROOM

THE NEW ORLEANS ROOM

Superb cuisine for discriminating
tastes, graciously served in quietly
elegant surroundings.

Luncheon: 11:30 a.m.—2:00 p.m.,
Monday thru Friday

Dinner: 5:00—10:00 p.m.,
Tuesday thru Saturday

the Pirates Cove
Cocktails with Character

At The Stadium Club
ANAHEIM STADIUM
2000 State College Blvd.
Five Minutes from Disneyland
Phone (714) 633-9000
for reservations
ACRES OF FREE PARKING

When in Disneyland, visit the Original Aunt Jemima's KITCHEN in Frontierland. Specializing in pancakes and waffles since 1955.

Look for this welcome sign when travelling in the U.S. Other Aunt Jemima's KITCHENS are located in Canada, Mexico and Europe.

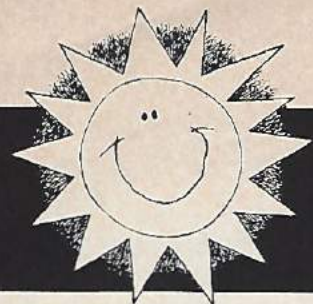
Aunt Jemima's KITCHEN

Delta is first coast-to-coast with the world's largest Jetliners

Now Delta pioneers the newest generation of giant Jets with the Super DC-8, world's largest Jetliner, non-stop between L.A. and Atlanta. Over a dozen Jets a day from California to Southern cities . . . Circle Trips to New York via the Caribbean and to Chicago via New Orleans. See your Travel Agent for all the happy details. And tell him Delta sent you!

DELTA
Best thing that ever happened to air travel





VACATIONLAND HIGHLIGHTS

Your Guide to Vacationland Attractions

With the influx of vacationers from throughout the nation and around the globe, Vacationland indeed becomes the playground for the world... a playground with almost limitless opportunities for adventure, excitement and relaxation.

SOUTHERN CALIFORNIA

Angel's Flight, the last of L.A.'s cable cars, carries passengers from Third and Hill to Olive, at the top of Bunker Hill. Fare is just a nickel, round trip.

Big Bear and Lake Arrowhead—Excellent winter recreational facilities. Skiing and ski lifts, tobogganing and other winter activities, in Big Bear. Shopping and dining in an alpine atmosphere on the edge of a beautiful lake, in Arrowhead. For information contact Big Bear or Lake Arrowhead Chamber of Commerce.

Briggs Cunningham Automotive Museum, 250 Baker Street in Costa Mesa, contains more than 50 pedigreed vintage cars. Open daily, except Monday. Admission charged. Free parking.

California Alligator Farm, across from Knott's Berry Farm on La Palma Avenue in Buena Park, is one of the world's largest reptile farms. Admission charged. Free parking.

California Museum of Science and Industry presents the story of California's agricultural and recreational resources, and illustrates the state's industrial and scientific development. Open daily, 10 a.m. - 5 p.m. Free.

Catalina Island, located 22 miles south of Long Beach-San Pedro. Boat tours and airplanes leave daily from the new Catalina Terminal in San Pedro. Features are glass-bottom boat rides, off-shore fishing, a bird sanctuary, fine swimming.

Chinatown, in downtown Los Angeles, just off North Broadway and Sunset, is Oriental in architecture and flavor, with fine restaurants, arts and curio shops. Open daily.

Farmer's Market, 3rd and Fairfax, Los Angeles. Famous shopping and dining location, with fresh foods and produce in outdoor setting. Open Mon.-Sat., 9 a.m.-7 p.m., closed Sundays. WE. 3-9211.

Grauman's Chinese Theater, 6925 Hollywood Blvd., in Hollywood, interesting from a strictly architectural point of view. Footprints, handprints, and signatures of the stars are in the cement of the theater's forecourt.

Henry E. Huntington Library and Art Gallery, Stratford and Oxford roads in San Marino. This elegant museum houses Gainsborough's "Blue Boy," Sir Thomas Lawrence's "Pinkie," and 63 other masterworks. Open daily, except Mon. and the month of October, 1-4:30 p.m. No charge. Free parking.

Japanese Deer Park, located in Buena Park, California, features more than 200 miniature deer, all ages may pet and feed. Other attractions are white dove, hokkaido bear, black swan, white peacock and golden carp. Refreshments served in restful Japanese tea house. Admission charged, all ages.

Jungleland, known for 40 years as the "Home of Famous Animal Stars," is the world's largest supplier of trained animals for movies and TV. Also features daily wild animal shows. 2034 Thousand Oaks Blvd., Thousand Oaks, just north of Los Angeles. Open daily, 9 a.m.-5 p.m. Admission charged. Free parking.

Knott's Berry Farm and Ghost Town, six miles from Disneyland in Buena Park, among Vacationland's most popular fun spots. Ghost Town is a replica of an 1894 Gold Rush town. Shows, rides, gift shops, fine chicken and steak dinners offered. Open daily, 11 a.m. - 9 p.m. No admission charge. Free parking. Area code (714) 522-1131.

Little Tokyo, just south of the Civic Center at First and San Pedro, is commercial and social center of L.A. Japanese community. Has unusual restaurants, clubs and shops.

Los Angeles Civic Center is dominated by the Los Angeles City Hall, the tallest building in Southern California. A free observation deck in the building tower provides a panoramic view of the city, 10 a.m. - 4 p.m., MA. 4-5211. Closed during October.

Los Angeles County Art Museum, 5905 Wilshire Blvd., opened in new quarters in 1965, houses art objects valued in excess of \$32 million. Free to public open daily, except Monday, 10 a.m. - 5 p.m.

Los Angeles County Museum is actually two museums in one, with extensive exhibits in history and the science. Tues.-Sun., 10 a.m. - 5 p.m., closed Mondays.

Los Angeles Zoo—The 110-acre, all new Los Angeles Zoo features more than 3,000 animals exhibited according to their native continents. In addition there are the Aquatic Section, Aviary, Reptile House and Children's Zoo. Open daily, except Christmas, 10 a.m. - 6 p.m. Admission charged.

Marineland of the Pacific, three-ring circus with performing whales, porpoise and seals. Continuous shows every day of the year. On the ocean near Los Angeles. FR 7-1571. Open 10 a.m. - 5 p.m. The last performance begins at 7 p.m. Admission charged. Free parking.

Mission Bay, located just two freeway hours south of Los Angeles on Pacific Coast Highway, is an excellent family vacation spot with year 'round swimming, deep sea fishing, golfing, water skiing and other outdoor sports. Also features boat rentals, bicycle rentals and several hotels with beautiful beachfronts. Information offices are located at 1702 East Mission Bay Drive, just off Interstate 5.

Movieland Wax Museum, 7711 Beach Blvd. Buena Park (near Knott's), 57 movie sets spanning Hollywood history, from silents to wide screen. Stars in scene from their hits. Also, PALACE OF LIVING ART including authentic reproductions of Michelangelo's "David."

Paris. Open Sun. - Thurs., 10 a.m. - 10 p.m.; Fri. - Sat., 10 a.m. - Midnight. Admission charged, free parking.

NBC Television Studio Tours, 3000 Alameda, Burbank. A one-hour behind-the-scenes tour. Includes Construction Shop, Wardrobe, Makeup, News, Color Studios, Editing & Projection Rooms and Rehearsal Halls. Free parking. Mondays through Saturdays, 10:00 a.m. - 6:00 p.m. Admission charged.

Olvera Street, just off N. Broadway and Sunset in downtown Los Angeles, exemplifies California's Spanish-Mexican heritage dating back to the 18th century. Curio shops, booths, sidewalk cafes, night clubs with authentic flavor.

Palm Springs Tramway, largest and longest single-lift passenger-carrying aerial tramway in the world. Restaurant, views, recreation offered. Open daily, 8 a.m. - 10 p.m., except Wednesday, 11 a.m. Admission and parking charged.

San Diego Zoo, in Balboa Park, is open daily, 9 a.m. to 6 p.m. Highlights include a children's zoo, where young animals may be petted, walk-through bird cages, free seal shows, picnic areas, camera rentals, stroller rentals, and wheel chairs. Guided bus tours are also available. Admission charged. Free parking.

San Fernando Mission, off of Golden State or San Diego freeways. on San Fernando Mission Blvd., takes visitors 170 years back in history to early California. Open daily, 9 a.m. - 5 p.m. Admission charged. EM 1-0186.

Sea World, in Mission Bay Park, San Diego, has 22 acres of entertainment. Features underwater porpoises, seal and penguin acts, pearl diving display, hydrofoil boat rides and more. Open daily, 10 a.m. - dusk.

Universal City Studio Tours, Hollywood Freeway and Lankershim Blvd. turn-off, feature a visit to an actual movie set and other close-ups of the movie-making industry. Closed on Sundays, Thanksgiving, Christmas, and New Year's Days. 877-1311.

NORTHERN CALIFORNIA

Hearst San Simeon State Historical Monument. The Hearst Castle at San Simeon is a magnificent 100-room structure now open to public tours. Information from Supervisor, Hearst San Simeon State Historical Monument, San Simeon, California. Admission charged.

Sacramento is not only California's capital city, but was the center of much of the State's early history. The tours of various governmental buildings are enjoyable as well as educational.

San Francisco is world-famous for its restaurants, stores and romantic flavor. Among its more exceptional attractions are Fisherman's Wharf, Chinatown, the North Beach area and the colorful and historic cable cars.

Yosemite National Park is one of Vacationland's most popular outdoor areas. The breathtaking Yosemite Falls, the mule pack trips and the camping facilities attract millions to this outdoor-man's paradise.

ARIZONA

The Grand Canyon is one of the world's most spectacular natural wonders, and is a favorite vacation and camping location for millions.

NEVADA

Hoover Dam, the tallest dam in the United States, where visitors can enjoy the water sports of Lake Mead formed by the dam. It is 30 miles from Las Vegas.

Las Vegas' famous show spots bring the world's top entertainers to this Nevada desert spa. Lavish floor shows, top name performers, and 'round-the-clock gaming make Las Vegas a most exciting vacation city.

**TAN YOUR
HIDE...IN** *Oceanside*
California's TOP Resort City



Between L.A. & San Diego
on U.S. 101
CHAMBER OF COMMERCE
510 FOURTH STREET
OCEANSIDE, CALIFORNIA

Visit NATURE'S Wonderland— Beautiful, Exciting CATALINA

Only two hours from the mainland by boat — only 17 minutes by air — and you're in Catalina, a world of fascinating natural wonders and breathtaking views of mountains, canyons, coves and the Pacific Ocean.

In a single day, you can view the strange hidden world under the sea from a glass bottom boat, see the natural beauty of Catalina from vantage points on the Mountain Terrace Drive, and then take a boat trip to the frolicking colony of seals at Seal Rocks, or enjoy the Skyline Drive, a delightfully scenic trip that takes you to Catalina's "Airport-in-the-Sky."

Stay another day and enjoy the Inland Motor Tour, a delightful 3½-hour trip into Catalina's interior where buffalo roam free, wild boar lurk in the thickets, and wild mountain goat graze the mountainside. With spectacular views of mountains, canyons, coves and the Pacific Ocean, this trip into Nature's land of unspoiled beauty is an adventure you'll never forget.

**FAST MOTOR CRUISERS DAILY
FROM THE PORT OF LOS ANGELES**

South end of the Harbor Freeway

Round Trip \$ **750** children half fare

Leave San Pedro 9:30 AM

Leave Avalon 3:45 PM

FOR RESERVATIONS
AND INFORMATION
547-1161
or SP 5-3341

**PACIFIC
SPORTFISHING
INC.**



Deep Sea

FISHING FOR
VACATION FUN

DELUXE BOATS

ALL-DAY OR HALF-DAY TRIPS

COMPLETE FACILITIES

RENTAL TACKLE

SOUTH END OF LONG BEACH FRWY.
PORT OF LONG BEACH-BERTH 221
FOR INFORMATION CALL: HE 5-5343 • SP 5-1302



Former U.S. President, Dwight D. Eisenhower, begins a day at Disneyland aboard the Main Street Fire Engine.

**ALLIGATOR
FARM**

exciting...! exotic...!

- 1000 live "movie star" alligators
- snakes
- lizards
- turtles
- crocodiles

from around the world

LA 2-2615 7671 E. LA PALMA
across from Knott's Berry Farm

DISNEYLAND VISITORS ...VIP'S ALL!

Today the magic of the name Disney and the excitement of Disneyland extend from homes and people around the world to castles and royalty around the world—even to many surprising places, like a Texas courtroom.

In San Antonio, Texas, a prospective juror told the judge that he was perfectly willing to serve, but he had already made plans to take his six children to Disneyland. The judge, noting that he, too, "had made a similar commitment for this year," excused the juror!

For reasons such as this, Disneyland has been called "a land where kings are commoners and commoners are

kings." In fact, many kings and queens, more than a dozen to date, have visited Disneyland—plus, nearly twenty presidents and prime ministers, more than twenty princes and princesses and even a few premiers.

The late King Mohammed V of Morocco perhaps best exemplified this king-commoner analogy. Wearing his native garb, a long grey robe and soft white shoes, the king had spent most of the afternoon touring the Magic Kingdom, with a State Department escort.

Two hours after departing, the King was back. He had returned to his hotel just long enough to change into

New York Governor Nelson Rockefeller enjoys the Dixie sounds of the Royal Street Bachelors in New Orleans Square.



FIRST 50 MILES
FREE



**ALFA
AUTO
RENTAL**

VW's to Cadillacs

FROM **\$5.00** FOR 24 HR. DAY
Plus Mileage

ALL RATES INCLUDE GAS, OIL & INSURANCE

Pick up your car at:

L.A. Airport, 9601 So. Sepulveda...SP 6-0411
Disneyland, 1700 So. Harbor Blvd.,
in Anaheim.....PR 2-6320
Downey, 13535 Lakewood Blvd.....ME 4-3600

And other locations • Offer Expires 1/68

**50 MILES FREE
WITH THIS AD**

GARDEN GROVE, CALIF.

Greenbrier

LUXURY COUNTRY DINING
ON A CHARMING OLD ENGLISH ESTATE

Particular people enjoy the restful country atmosphere of 'The Pub' and the garden view dining room paneled in 17th century hand carved 'Linen fold.' The spacious lounge is furnished in museum quality antique furniture and paintings.

Open Daily for Lunch and Dinner
Saturday from 6 p.m.

Conference and Banquet Rooms

Reservations Required
(714) 537-4020

10381 Garden Grove Blvd.
Garden Grove, Calif.

A short distance from Disneyland

At Disneyland, EVERYONE is given the VIP treatment.



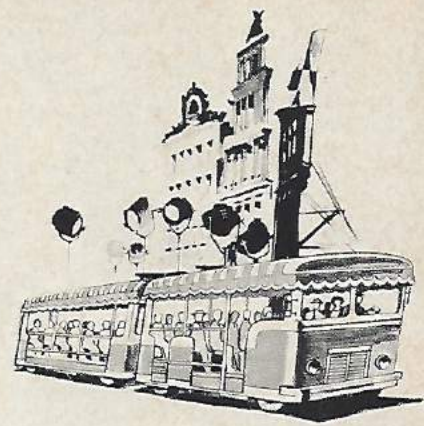
a business suit and leave his escorts—then back to Disneyland, this time as a "commoner."

The fundamental reason for Disneyland's popularity with both kings and commoners is found in the basic approach to entertaining people that is practiced at the Magic Kingdom. Here, new employees are told in a training class, "We love to entertain kings and queens, but the most important thing to remember is this: Every guest receives the VIP treatment." And, in a training booklet, it says "Disneyland is a first-name place... the only 'Mr.' here is 'Mr. Toad'... It's not just important to be friendly and courteous

Continued next page



A Tour Guide, with her guests.



See it all at Universal!

WORLD'S LARGEST
MOTION PICTURE & TV STUDIO

See make-up demonstrations

See movie stars'
dressing rooms

Do-it-yourself special effects

See stunt men in action

Tour the lot on GlamorTrams

You can spend 3½ hours
or all day!

Continuous tours daily



No reservations required. Food and refreshments available. Lankershim Blvd. at the Hollywood Freeway. For information, call (213) 877-1311.

UNIVERSAL CITY STUDIOS

© 1967 Universal City Studios, Inc.

Come see
the sea
show by
the sea
shore!



Whales dance! Porpoises play ball! Seals show off! Penguins, walruses, sharks, exotic fish entertain! The show never stops; daily, 10 till sunset! Neither does the fun. One admission covers everything. Kids under 7 free. Parking free.

MARINELAND

On the coast between
Redondo Beach & San Pedro

- 21 stories down by elevator
- Always 56 degrees cool
- Guided tours
- Gift shop
- Free camping and picnic facilities

GRAND CANYON CAVERNS

On U.S. 66 between Kingman
and Flagstaff, Arizona

- New Park Motel with coffee shop, cocktail lounge, pool
- Member Best Western Motels and Triple A
- Nearest motel to Havasupai Canyon
- 4200-ft. airstrip
- Chevron station

For brochures and information call Dinosaur #1 thru Prescott, Arizona or write Grand Canyon Caverns, Dinosaur City, Arizona



Music at mealtime is another example of the special VIP treatment Disneyland provides for its guests.

Disneyland Visitors... Cont'd

to the public, it's essential... 'Customer' is a bad word. We are hosts and hostesses, and *everyone* who enters our main gate is a *guest*!"

Some Disneyland visitors, however, have had difficulty being just plain guests. Everywhere motion picture star Betty Hutton went in Disneyland, visitors recognized her and asked for autographs. So, Miss Hutton bought fake eyelashes in Merlin's Magic Shop and a pirate hat with a special sword that appeared to go right through her head. The disguise worked perfectly. No one recognized Miss Hutton, but people continued to stop her. This time they wanted to know where they could buy "a hat like that crazy one you've got on!"

MOVIELAND WAX MUSEUM

World's Largest and Finest!

- ★ See over 100 great stars
- ★ Marvel at over 60 lavish sets
- ★ Thrill to world's great art—in wax
- ★ See stars & art treasures of the ages come alive!

TWO Great Attractions—ONE Admission!
Nothing Like It On The Face of The Earth

BUENA PARK
 7711 Beach Blvd.
 (Hwy 39)
 Just North of Knott's
OPEN DAILY AND EVENINGS
 Visit New Movieland Restaurant

Palace of Living Art NEW MILLION-DOLLAR ADDITION

AUTHENTIC... Like a Visit to Old Japan!

JAPANESE DEER PARK

UNFORGETTABLE FAMILY FUN!
 America's only authentic Japanese Deer Park—fascinating adventure for the entire family! Pet and feed scores of tame deer that roam free... be enchanted by doves that alight on your hand... sip tea in a restful Japanese Tea House while rare Golden Carp and Black Swan swim in a nearby lagoon.

BUENA PARK

ADMISSION ONLY 50 CENTS/OPEN DAILY & EVENINGS. JUST 5 MINUTES FROM WORLD-FAMOUS MOVIELAND WAX MUSEUM — SANTA ANA FREEWAY AT KNOTT AVENUE.

ANAHEIM

YOUR FAMILY RESTAURANT

Chalet

PANCAKE AND STEAK HOUSE
 Adjoining Disneyland Parking Lot at the Katella Entrance
 Phone: KEystone 3-3887

FAMOUS FOR Good food • Dancing Nightly
 open daily 10AM to 2AM • Banquet facilities •
 cocktail lounge • children's menu

The Dancers

1640 SOUTH HARBOR—OPPOSITE DISNEYLAND
 KE 63720 OR KE 5-1500

ACROSS FROM DISNEYLAND—OPEN DAILY
 1560 S. Harbor, Anaheim

Chao's

AUTHENTIC CHINESE-AMERICAN RESTAURANT

Steaks • Lobster • Chicken

FOR DELIVERY CALL 776-1880
 Mr. & Mrs. CHAO

Dining Directory

GILA BEND

Mrs. Wright's

DINING ROOM • COFFEE SHOP
 SALAD BAR • CHILDREN'S MENU

One mile east of downtown Gila Bend on U.S. 80

PHOENIX

LET'S EAT

● SAWDUST ON THE FLOOR ● ALWAYS COME AS YOU ARE
 ● ENJOY THE ATMOSPHERE OF THE EARLY DAYS ● WHERE WE FEED YOU — WE DON'T FOOL YOU

Bill Johnson's BIG APPLE RESTAURANT

3757 E. VAN BUREN PHOENIX ARIZONA

SAN DIEGO

Shelter Island's **Bali Hai**

EXOTIC CANTONESE FOOD
 POLYNESIAN FLOOR SHOW

Tom Ham, Mgr. • 1325 Yacht Harbor Dr., San Diego

SANTA ANA

KONO

HAWAII RESTAURANT AND TEA HOUSE
 Tropical Drinks

226 So. Harbor Blvd.

TULARE

PERRY'S

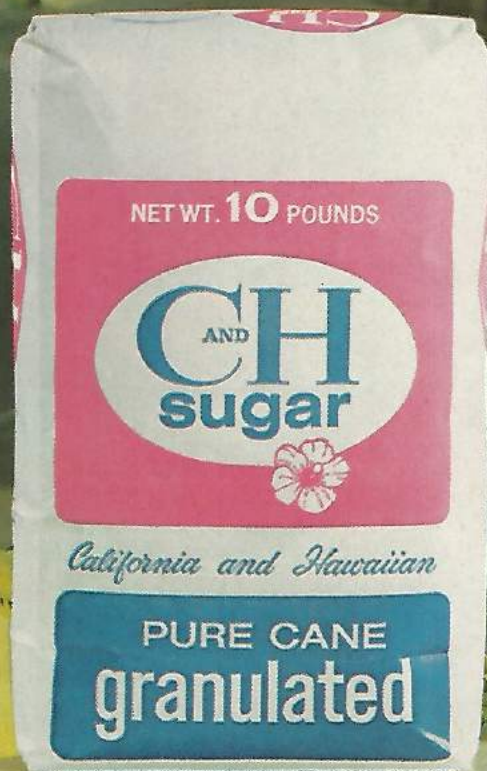
Coffee Shop + Chuck Wagon

PAIGE AVENUE & 99 FREEWAY
 "The Best Cup of Coffee on 99"

No.1 Sugar on Main Street in Disneyland

(and on all Main Streets of Western America)

C and H is the official sugar of Disneyland. Be sure to visit the C and H Sugar Corner when you come to Disneyland.





*"Independence now, and
Independence forever."
John Adams, 1776*

See this exact brick-by-brick reproduction of Independence Hall at...Knott's Berry Farm & Ghost Town. 200 acres of dining, shopping and entertainment. On Beach Blvd. (Hwy. 39) 2 miles south of the Santa Ana Freeway, Buena Park, California.

KNOTT'S BERRY FARM & GHOST TOWN

OPEN EVERY DAY AND EVENING OF THE YEAR

