



BULLETIN
*New York Worlds' Fair**
International Number

A NEW TOMORROW

150 Years Ago

America gave to the world a new concept of government. The inauguration of George Washington on the balcony of Federal Hall in New York City on April 30, 1789, signaled this event.

It seems fitting that the New York World's Fair, in commemorating a ceremony of such historic significance, should seek to emulate in the economic and social sphere what Washington and his contemporaries accomplished in the realm of government, that it should seek to enlist the nations of the world in an attempt to build a new World of Tomorrow, a world of peace and security and of a fuller, happier existence for the average man.

The New York World's Fair will try to show how the tools and materials we now possess, if properly utilized, can fashion a better life. It will also endeavor, in bringing the nations together as exhibitors, to safeguard this better life by arranging a series of round table conferences on international peace and amity.

Small wonder that the nations of the world have responded as never before to such an inspiring theme. Fifty-nine nations preparing to participate, thirty-three with definite space reservations—such is the remarkable tally fifteen months prior to the opening of the Exposition.

Small wonder, too, that on the national scene the response has been equally whole-hearted. Thirty-two states and two territories, 143 great corporations and almost 20,000 men and women in a far-flung system of national advisory committees have already joined the Fair ranks.

Small wonder, in short, that the New York World's Fair 1939 will be a truly great Exposition—an Exposition that will have a profound effect on life in every nation for many years to come.

INVERTED FOREST

Eleven miles of piles form a solid foundation for the lofty Tylon.

NEW YORK WORLD'S FAIR BULLETIN
No. 8
World's Fair 1939
New York City, N. Y.

Vol. 1 Official Publication of New York
December 1937
Hunting Meadow Park
GROVER A. WILSON
FRANK A. JOSE
GEORGE A. WALKER
ARTHUR H. BUCKNER
JAMES W. GILSON
Committee on
HONORARY CHAIRMAN
on
CHIEF CHAIRMAN
ASST. CHAIRMAN
FINANCIAL
CHIEF OF DEPARTMENT
CHIEF OF EXHIBITS
CHIEF OF TOURS
CHIEF OF TRANSPORTATION
CHIEF OF PUBLICITY
CHIEF OF SECURITY
CHIEF OF MEDICAL SERVICES
CHIEF OF FIRE DEPARTMENT
CHIEF OF POLICE DEPARTMENT
CHIEF OF MARINE DEPARTMENT
CHIEF OF AIR FORCE DEPARTMENT
CHIEF OF NAVY DEPARTMENT
CHIEF OF ARMY DEPARTMENT
CHIEF OF AIR MAIL DEPARTMENT
CHIEF OF AIR FORCE DEPARTMENT
CHIEF OF NAVY DEPARTMENT
CHIEF OF ARMY DEPARTMENT
CHIEF OF AIR MAIL DEPARTMENT

Published by New York World's Fair, Inc.
U.S.A.

WORLD WIDE

Will Be Participation in the New York World's Fair



Dr. Halvdan Koht, Foreign Minister of Norway, accepts, Seated is James W. Geiard, former Ambassador to Germany.

EXTENSIVE participation of foreign nations in the New York World's Fair is no longer a hope. It is an accomplished fact. Forty-four countries have accepted President Roosevelt's invitation to take part in the Exposition, and fifteen others have indicated that they will accept. Thirty-three of these nations already have reserved 1,450,000 square feet of space in the Fair. Nineteen are already planning to erect their own buildings.

Such a record at this time makes certain that, when April 30, 1939 arrives, the Government Zone of the Fair will be a complete geography of the world—a living geography far more instructive, far more fascinating than any book.

Plans for the great Hall of Nations are now being prepared by architects of the Federal Government. Twenty-seven nations to date have taken 285,000 square feet of space in this structure for their official government exhibits.

Countries already in or on the threshold of the Fair are:

Afghanistan

Representative paid unofficial visit to the site; informal discussions held.

Albania

Acceptance of invitation to participate probable.

Argentina

Unofficial acceptance.

Australia

Informal conversations held with several officials who have visited the site.

Austria

Now giving serious consideration to participation.

Belgium

Official acceptance. Dr. Joseph Gevaert, Commissioner General, came here and signed a contract for 10,000 square feet of space in the Hall of Nations and 12,000 square feet for a building to be designed by Henry Van de Velde.

Bolivia

Official acceptance.

Brazil

Official acceptance. Raphael Correa De Oliveira, representing the Ministry of Commerce, has signed a contract for 48,000 square feet for a Brazilian Pavilion. Total cost of the exhibit is expected to be \$1,000,000.

Bulgaria

Official acceptance. A contract has been signed for 5,000 square feet in the Hall of Nations.

Canada

Official acceptance. A contract has been signed for 40,000 square feet in the Government Zone. Major J. C. Parmelee, Deputy Minister, Department of Commerce; Peter Herran, Minister of Lands and Forests, and other officials have visited Fair headquarters and begun discussion of plans. Canada has agreed to send warships and an air fleet to New York during the Fair.

Chile

Official acceptance. Plans for participation have been discussed with E. Guzman Donoso, purchasing agent for the Chilean State Railways.

Colombia

Official acceptance. In addition to exhibiting, Colombia will send some of her naval vessels to New York in 1939. The Consul General at New York will, according to a government decree, be Commissioner for the exhibit.

Costa Rica

Unofficial acceptance. 5,000 square feet of space requested.

Cuba

Official acceptance. A contract for 10,000 square feet in the Hall of Nations and three acres in the Amusement Zone has been signed by Fulvio Siles y Estrada, Commissioner General. Government and private enterprises expect to invest \$1,000,000 in exhibits. Cuba also expects to send warships.

Czechoslovakia

Official acceptance. A contract has been signed for 10,000 square feet in the Hall of Nations and 50,000 square feet nearby for a building.

Denmark

Official acceptance. The Danish Government has taken 10,000 square feet in the Hall of Nations and 20,000 square feet for a building.

Dominican Republic

Official acceptance.

Dutch East Indies

Official acceptance. Department of Economic Affairs has been authorized by the Dutch Colonial Office to participate. Discussions held with a commercial representative of the government.

Ecuador

Official acceptance. Consul General Srato E. Duran Ballen has signed a contract for 10,000 square feet of space in the Hall of Nations.

Egypt

Official acceptance. Hassan Sabry Pasha has been appointed Commissioner General, and M. Waguib Rustom, Chargé d'Affaires at Washington, has signed a contract for 40,000 square feet, 10,000 in the Hall of Nations and 30,000 for a building site. Egypt's investment in the Fair will exceed \$250,000.

Finland

Official acceptance. First European nation to participate, Finland has taken 10,000 square feet in the Hall of Nations and has asked for an additional 5,000 square feet. Hatti Ruohelin has been named Commissioner, while Hjalmar Proop, ex-Foreign Minister of Finland, and Jaakko Kahama, managing director of the Finnish Export Association, have visited the site.

France

Official acceptance. French exhibits will occupy 10,000 square feet of space in the Hall of Nations and 100,000 in an adjoining plot in the Government in the Amusement Zone. Total cost of the display will amount to approximately \$1,000,000. Marcel Olivier, chairman of the board of the French Line, has been named Commissioner General to the Exposition, while Pierre Patour is chief architect.

Great Britain

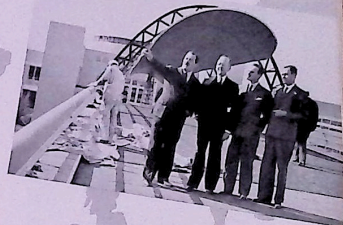
Official acceptance. For herself and her dominions and self-governing colonies England has requested 40,000 square feet in the Hall of Nations and 100,000 square feet on which to erect a building. Sir Louis Beale has been named Commissioner General, and Claude Taylor, director of exhibits and expatriates, and Ronald Tree, parliamentary secretary of the Overseas Board of Trade, have visited the site. The government will send warships to the Exposition.

Greece

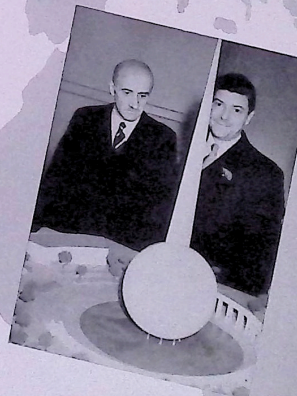
Official acceptance. The Greek government has requested 10,000 square feet in the Hall of Nations and space for a building.

Guatemala

Official acceptance. Guatemala was the first nation to come into the Fair. It has taken 10,000 square feet in the Hall of Nations for its exhibit.



Cuba looks over the grounds.



Dr. Joseph Gevaert, Belgian Commissioner General, inspects the Pousphere and Tylon. With him (left) is Robert Van Der Straeten Ponthoz, Belgian Ambassador.

Czechoslovak Pavilion of the Paris Exposition.



Top: Waguib Rustum, Egyptian Charge d'Affaires, (right) and Hassan Youssef, Egyptian Consul, (second from left) are interested in model of Fair building which derives its architectural inspiration from the Nile.

Center: Mexican Village at the Century of Progress.

Bottom: Sixto E. Duran Ballen, Ecuadorean Consul General, signs for exhibit space.

Haiti

Official acceptance.

Honduras

Official acceptance.

Hungary

Official acceptance. Consul General George de Ghika has signed a contract for 10,000 square feet of space, and the government has appropriated \$225,000 for participation.

Iceland

Official acceptance. Representatives have signed an agreement providing for 10,000 square feet of space.

Irak

Minister of Finance studying questions.

Iran

Participation under consideration by government at Teheran.

Ireland

Official acceptance. Leo T. McAuley, Commissioner General, has signed a contract for 10,000 square feet in the Hall of Nations.

Italy

Official acceptance. A contract has been signed for 10,000 square feet in the Hall of Nations and 100,000 square feet for a building, and Vice Admiral Gaspare Cannas has been appointed Commissioner General. Dr. Orazio Pedrazzi, former Commissioner General; Dr. Arturo Costantini, Deputy Commissioner; and Michele Busini-Vici, official architect, have visited the site and discussed plans for a \$1,000,000 exhibit. Naval vessels and planes will be sent to the Exposition if possible.

Japan

Official acceptance. Consul General Kaname Wakabayashi has signed a contract for 10,000 square feet in the Hall of Nations and taken an option on 60,000 feet of additional space. Naval vessels will be sent to the Fair if possible.

Latvia

Studying question of participation.

League of Nations

Official acceptance. The League Assembly unanimously authorized participation and voted a preliminary credit of \$500,000.

Liberia

Official acceptance. Walter F. Walker, Consul General at New York, has signed a contract for 15,000 square feet of ground space for a building. President Edwin Barclay has appointed a Fair Commission, headed by Colonel L. Dennis, Secretary of the Treasury, and \$150,000 has been appropriated for its expenses.

Liechtenstein

Dr. Josef Hoop, Prime Minister, has requested space and assured the Corporation that Liechtenstein will participate.

Lithuania

Official acceptance. Contract signed for 10,000 square feet in the Hall of Nations.

Mexico

Official acceptance. Consul General Rafael de la Colina will make arrangements for an exhibit. The Government has agreed to send planes to the Fair.

Morocco

Unofficial acceptance.

The Netherlands

Official acceptance. A contract for 10,000 square feet in the Hall of Nations and 90,000 additional footage for a building was signed by Dr. J. J. Oeyevaar of the Ministry of Industry and Commerce. The exhibit is expected to represent an investment of \$750,000. Fair authorities here have had conferences with Count W. Van Reuberen Lampurg, Dutch Charge d'Affaires; B. Klein Moldekamp, Commercial Counselor, and J. J. Smeets, Acting Consul General. It is expected that Dutch warships will pay a visit to New York during the Exposition.

New Zealand

Giving favorable consideration to taking part.

Nicaragua

Official acceptance. Consul General Noel Ernesto Pallais has signed a contract for 5,000 square feet of space in the Hall of Nations.

Norway

Official acceptance. Dr. Lorenz Vogt, chairman of the participation commission, has contracted for 10,000 square feet of space in the Hall of Nations and 20,000 square feet of additional space for a building. Dr. Halvdan Koht, Minister of Foreign Affairs, has been part of the Fair at a luncheon.

Panama

Official acceptance.

Paraguay

Unofficial acceptance.

Peru

Official acceptance.

Poland

Official acceptance. A participation contract has been signed for 10,000 square feet in the Hall of Nations and an additional 40,000 square feet for a Polish building. Stefan Ropy has been appointed Commissioner, and an expenditure of more than \$1,000,000 is envisaged.

Portugal

Minister J. A. de Bianchi has inspected the site and submitted a report urging participation.

Rumania

Official acceptance. Dr. Demetre Gusti, Rumanian Commissioner to the Paris Exposition, has signed a contract for 10,000 square feet in the Hall of Nations and 20,000 feet for a building.

Siem

Official acceptance. Phya Abhulal Rajamaitri, Siamese Minister at Washington, has been designated to negotiate with Fair authorities for 10,000 square feet of ground space.

South Africa

Considering favorably its participation.

Sweden

Official acceptance. Sweden desires 90,000 square feet of which 10,000 will be in the Hall of Nations. The government has asked a New York advertising firm to make a survey of what Fair visitors would like to learn about Sweden.

Switzerland

Participation still under consideration. Officials indicate that Switzerland will occupy at least 10,000 square feet of space in the Hall of Nations and 25,000 square feet of additional area for a Swiss village.

Turkey

Official acceptance. The Turkish Government has taken 10,000 square feet in the Hall of Nations and has requested space for a building.

U. S. S. R.

Official acceptance. Ambassador A. A. Tryanzovsky and David Rosoff, president of the Amberg Trading Corporation, have contracted for 110,000 square feet of space—100,000 for Soviet industry and 10,000 in the Hall of Nations. A Commissioner General will come to New York next month.

Uruguay

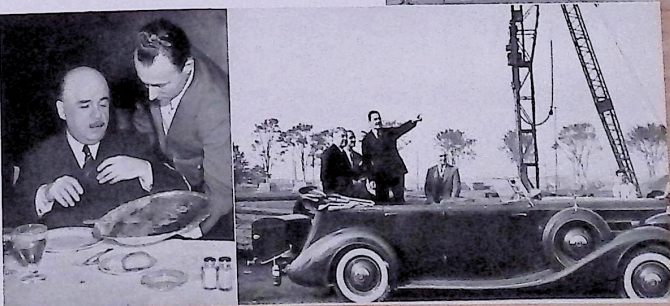
Official acceptance. J. Reching, Uruguayan Minister to Washington, has been named Fair Commissioner General.

Venezuela

Official acceptance. Government officials have promised that Venezuela also will be represented by warships if possible.

Yugoslavia

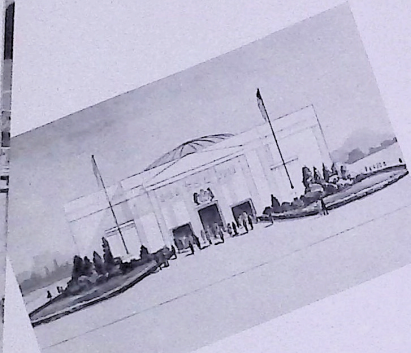
Official acceptance. Contract for 10,000 square feet in the Hall of Nations has been signed by Constantin Fotich, Yugoslavian Minister to Washington, who visited the site accompanied by Consul General Bojidar P. Sumanovitch.



Top: Swedish Pavilion at the World Columbian Exposition.

Bottom: Marcel Olivier, French Commissioner General, breaks bread at Fair headquarters. Orazio Pedrazzi, former Italian Commissioner General, and Michele Busini-Vici, chief Italian architect, are shown over the Fair site.

American Panorama

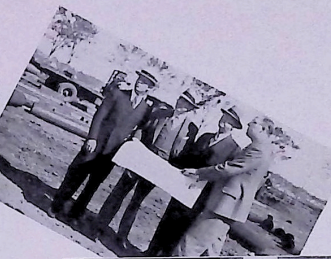


Architect's drawing of Missouri Building.

AMERICAN governmental units are marshaling an impressive group of exhibits for the New York World's Fair. Already—fifteen months in advance of the opening date—thirty-two states and two territories have taken action looking toward participation. In eleven other states legislatures meet this winter, and Fair bills are expected to be introduced. Most of the remaining states, it is believed, will take some form of special action so that they, too, may be represented at New York in 1939. The Federal Government is developing an outstanding display, while the City and State of New York will be imposingly represented.

Officials and business men throughout the country are coming increasingly to realize the unique opportunity which a fair offers as a medium for direct demonstration of natural and other advantages. One state in

R. M. Hanes, chairman of the National Advisory Committee for North Carolina, and W. E. Fenner, chairman of the North Carolina World's Fair Commission, (left to right in center) watch construction activities.



particular has noted an immediate and quite appreciable increase in tourist travel after each exposition in which it has participated. Emphasis is being placed by New York Fair officials on having each state portray those things in which it excels or is unique, rather than attempt to present an exhaustive catalogue of state activities and resources. This practice, it is felt, will benefit both the Fair and the states themselves, since visitors will not be surfeited by displays which contain no dramatic appeal or focus of interest. In their search for suitable material some states will, no doubt, discover that they have overlooked heretofore their most attractive features.

State exhibits will be concentrated in the Government Zone of the Fair, some in the great Hall of States, others nearby in their own buildings. An account of governmental activities to date follows:



Charles T. Haas, chairman of the Oregon Fair Commission, and Thomas F. Gunn, vice chairman, are shown site of the Oregon exhibit.

Arizona

Passed a bill creating a commission of five members and appropriating \$5,000. Commission members are: J. M. Sparks, Phoenix, chairman; W. G. Bowman, Nogales; F. C. Bishop, Phoenix; T. J. Healy, Patagonia; Lester Ruffler, Prescott.

Arkansas

Placed participation in the hands of the Arkansas Publicity Advisory Commission. Members of the commission, a department of the state government, are: E. W. Fullerton, Warren, chairman; H. C. Couch, Pine Bluff; Walter Haun, El Dorado; Donald Murray, Jacksonville; C. E. Palmer, Texarkana.

California

Will appropriate \$500,000 for the Golden Gate Exposition was awarded to permit acquisition of \$200,000 for a building and exhibit on the New York World's Fair to be supervised by the commission created by the bill.

Connecticut

Adopted legislation creating a five member commission and appropriating \$50,000. Serious consideration is being given to a plan for participation of New England states as a group. Members of the commission are: W. B. Rogers, Hartford, chairman; John Cunningham, Norwich; D. E. Fordham, New Haven; F. G. Hughes, Bristol; A. E. Payson, Norwich.

Florida

Florida National Exhibits Inc., acting on behalf of the state and of private enterprise, has taken an option on 10,000 square feet of space on the west shore of Meadow Lake. A large pavilion will be erected, and in this building and on the adjacent grounds will be presented exhibits depicting all the resources and advantages of the state. They will range from a typical peach vine laid out on the shore of the lake to actual orange groves and displays dramatizing Florida's phosphate mines, animal life and other features. Several officials already have visited the Fair site and conferred with Exposition authorities, among them Governor Fred P. Coe; Earl Brown, vice president and general manager of the exhibit company; John Maxcy, chairman of the Florida Citrus Commission, and Marvin H. Walker.

Georgia

Passed a bill setting up a committee of fifty citizens to formulate and submit to the Governor plans for participation, which will be financed by private enterprise since the Georgia Constitution does not permit use of state funds for exposition purposes outside the state.

Illinois

Enacted legislation appropriating \$200,000 for participation and creating a commission of sixteen members to have charge of the exhibit.

Iowa

Passed an act providing for a nine member commission to arrange for participation. Commissioners are: Secretary of State Robert E. O'Brien, Des Moines; Senators Roy E. Serey, Ottumwa; M. X. Goble, McGregor; D. W. Kimberly, Davenport; Leo Elkhorn, Ferris; Albert J. Shaw, Pocolathas; Representatives Leroy S. Mercer, Iowa City; Gustave Altsch, Marcus; Morgan J. McManey, Mason City; Dewey E. Bloomfield, and Jess Thompson, Rolfe; Edward A. Kimball, Des Moines; Duste M. Pierce, Des Moines; Earl E. May, Shenandoah.

Kansas

Enacted a bill setting up a commission of ten members. Members are: Howard Casey, Hutchinson, chairman; Thomas McNally, Fairburg, vice chairman; J. C. Mohler, Topeka, secretary; J. A. Aylward, Wichita; Harry Bryant, Paris; Ira Clemens, Pittsburg; C. M. Harger, Abilene; Governor Walter A. Hauman, Topeka; J. F. Jarrell, Topeka; William Allen White, Emporia.

Maine

Authorized the Maine Development Commission to take charge of participation and appropriated \$500,000. Joint action with the other New England states is being considered. On the commission are: Governor Lewis O. Barron; George J. Stille, Commissioner of Fish and Fisheries and Game; Frank P. Washburn, Commissioner of Agriculture; Neuman B. Doyle, Caribou; Harold N. Harold, Commissioner of Agriculture; Neuman B. Doyle, Caribou; Harold N. Harold, Commissioner of Agriculture; Neuman B. Doyle, Caribou; A. G. Staples, Sandisfield; R. P. Hazard, Gardiner; T. L. Roberts, Bar Harbor; A. G. Staples, Sandisfield; H. H. Sweet, Southwest; Senator C. J. Westworth, Kennebunk.

Maryland

Placed participation in the hands of a commission, members of which are: Charles W. Galloway, Baltimore, chairman; Representative Emanuel Goheen, Baltimore, vice chairman; Senator J. Allan Coal, Leonardtown, vice chairman; State Tax Commissioner Harry O. Lewis, Baltimore, treasurer; Warren T. King, Baltimore, secretary; Mayor Howard W. Jackson, Baltimore; Henry M. Warfield, Baltimore; H. Clifton Byrd, College Park; Albert D. Hutzler, Baltimore; Irvin Kohn, Baltimore; Lansdale G. Sasser, Upper Marlboro; Charles E. McManus, Baltimore; W. F. Roberts, Baltimore; Albanus Phillips, Cambridge; Wilmer Fox, Elkton; G. H. Frazier, Baltimore; G. F. McCormick, Baltimore; Wilmer Bell Davis, Federalburg; J. David Baile, Medford; Mrs. Lulu W. Boucher, Barton; William S. Wilson, Jr., Baltimore; William H. Labret, Annapolis; Herbert Ireland, Plum Point; Ralph H. Coer, Salisbury; Edwin S. Geln, Westminster; J. B. Ferguson, Hagerstown; B. M. Kamens, Cumberland; W. K. Saxton, Baltimore; James S. Stewart, Salisbury.

Massachusetts

Enacted legislation providing for a commission of seven to investigate the question of participation and to report its recommendations to the next session of the legislature. The commission has visited the Fair grounds and has been furnished with data for its report. Its members are: Senator George G. Moore, Walburn, chairman; Representative Gustave W. Everleigh, Woburn, vice chairman; W. Rea Long, Boston, secretary; Henry K. Chubb, Freetown; Representative Michael H. Jordan, Lawrence; Representative Rudolph F. King, Milis; Representative Thomas J. Lane, Lawrence; Philip J. McAtee, Boston.



Massachusetts Commission visits Fair headquarters.

Washington

Passed an act creating the Washington State Progress Commission and appropriated \$200,000 for its activities, one of which is to arrange for participation in the Fair. Members of the commission are: Eric Johnson, Spokane, chairman; E. B. McGovern, Seattle; James C. McCluskey, Spokane; Frederick Macy, Yakima; Chapin D. Foster, Clehali; Charles Larabee, Fort Harn; Leo Weisfield, Seattle.

West Virginia

Set up a commission of twelve members and appropriated \$35,000 for expenses in participation. West Virginia has been allocated 3,000 square feet in the Hall of States and has taken an option on an additional 1,500 square feet. Charles E. Hodges, president of the Senate; James K. Thomas, speaker of the House of Delegates; J. B. McLaughlin, Commissioner of Agriculture, and C. W. Martin of Charleston—all members of the commission—have visited the site and conferred with Fair officials.

Wisconsin

Adopted legislation creating a committee of ten members to have charge of a Fair exhibit. Authorized departments, boards, commissions and institutions to cooperate with the committee and draw on their own funds as necessary to finance their share of the exhibit.

Wyoming

Enacted a measure creating a nine-member commission to arrange for participation. Members are: Governor L. A. Miller, ex-officio chairman; John U. Lowmy, Cheyenne, chairman; Robert D. Hanesworth, Cheyenne; Dr. J. H. Holland, Evanston; Irving H. Larson, Valley; George McCormick, Thermopole; Senator Neils A. Pearson, Sheridan; Dr. J. P. Berolje, Lander; Charles B. Stafford, Cheyenne; W. F. Wilkerson, Casper.

Hawaii

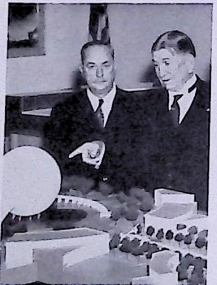
Appropriated \$50,000 for participation in both New York and San Francisco Fairs, this fund to be supplemented by contributions from private sources. George T. Armitage, member of the Hawaiian Tourist Bureau, has inspected the site and obtained such data as is needed to determine what form participation will take.

Puerto Rico

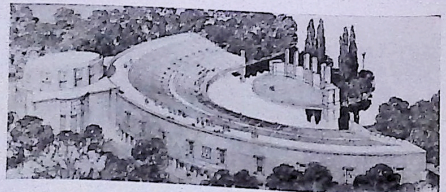
Appropriated \$50,000 for participation and reserved 4,500 square feet in the Hall of States. Native artisans will be brought to the Fair to demonstrate island industries such as sugar, coffee and tobacco growing, furniture making and needlework and embroidery. The attractiveness of Puerto Rico as a vacationland also will be stressed. Arrangements for the exhibit are being handled by Fernando J. Ortel, New York director of Agriculture and Commerce, and Jose Martinez, director of Publicity, Department of Agriculture and Commerce.

Eleven States

Are expected to take action this winter when their legislatures meet. They are: Alabama, Kentucky, Louisiana, Michigan, Mississippi, Nebraska, New Jersey, Ohio, Rhode Island, South Carolina and Virginia.



An outstanding exhibit is promised by Governor Conn of Florida (right) and John Maxcy, chairman of the Florida Citrus Commission.



New York State Marine Amphitheatre and Exhibit Building.

FAIR
AMBASSADORS

to the States
of the Union



Winthrop W. Aldrich, chairman, National Advisory Committee.

BANKERS, industrialists, engineers, lawyers, business men and civic leaders—of such is constituted the membership of the National Advisory Committee of the New York World's Fair 1939. Forty-eight hundred strong, they are the Fair's national diplomatic corps, its ambassadors of goodwill to the states of the Union.

With forty-eight chairmen appointed and with organization virtually completed in every state, the National Advisory Committee brings to the support of the Exposition as impressive a group of the nation's leading citizens as has ever been gathered together in one body.

Each local chairman heads a group of one hundred citizens prominent in the affairs of his state. These local groups will create and maintain interest in the Fair in their sections. With material furnished them from Fair headquarters they will be able to keep the people of their communities informed of Fair progress, particularly as it relates to their state.

By means of the state committees the Fair Corporation will be able to keep a constant finger on the pulse of the nation. Through them it will keep the Fair attuned to the needs and desires of the average man. They will also be helpful when it comes to specific problems, such as the planning of a program of "state days" at the Fair.

The New York World's Fair commemorates an event, not of local but of national and international historical significance. Those who are planning it are determined that it will be more than just a community celebration, more than just a stimulus to local trade and business and the arts and sciences. They are determined that its effects shall be nation-wide and world-encircling. To take a real step forward toward a better World of Tomorrow is their objective. And in the realization of such an objective the National Advisory Committee is expected to play a major role.



Thomas J. Donovan, Administrative Assistant to the President, and Charles C. Green, Fair Corporation Secretary and Director of Advisory Committees.

OSCAR WYLLI, Birmingham. Chairman of the board, First National Bank, First president, American Bankers Association. Director and treasurer, U. S. Chamber of Commerce.

R. F. KAYBARGER, Des Moines. President and director, Bankers Trust Co.; trustee, Edmundson Memorial Foundation; director of various corporations; member, Iowa State Banking Board.

HENRY COLLIER, Phoenix. Official of The Texas Company; national councillor, U. S. Junior Chamber of Commerce. Former president and director, Phoenix Junior Chamber of Commerce. Active in civic work.

GEORGE G. MOORE, Topeka. President and general manager, National Reserve Life Insurance Company; director and treasurer, Kansas State Chamber of Commerce. Possessor of large farming interests and breeding stables.

GROVER T. OWENS, Little Rock. *Senior partner*, law firm of Owen & Thomsen. Past president, Little Rock Chamber of Commerce, Little Rock Community Chest Association. Prominent in state Bar Association activities.

E. J. O'BRIEN JR., Louisville. President, Edward J. O'Brien & Co., hat accessory dealers; president, Tobacco Association of the U. S.; member, executive committee, National Safety Council. Active in civic and religious affairs.

FRANK C. BALEWIS, San Diego. Vice president and director, First National Trust & Savings Bank. Served as president, California Pacific International Exposition, 1935-36. Director, J. D. & B. L. Sprinkle Co.

E. F. CARROLLS, New Orleans. Vice president and general manager, American Cotton Cooperative Association. Former president E. F. Coker & Co., cotton merchants; the Cotton Stabilization Corporation; Internal Farm Board subsidiary.

JOA K. YOUNG, Pueblo. Vice president and general manager, Coca-Beggs Dry Goods Company. Associated with firm since 1913. Past president of Chamber of Commerce, Y. M. C. A. and Community Club.

DR. OWEN SMITH, Portland. President, Maine State Chamber of Commerce; member, American College of Surgeons; affiliated with five hospitals; vice president and director, Odel Manufacturing Company.

SAUEL H. FISHER, Litchfield. Lawyer; director of various corporations; chairman, Connecticut Highway Safety Commission. Chairman, Transportation Commission, 1934-36; for 16 years Fellow of the Yale Corporation.

DR. HECH H. YOUNG, Baltimore. Professor of Urology, Johns Hopkins Medical School; visiting urologist Johns Hopkins Hospital. Author of numerous scientific articles. Chairman, State Aviation and State Loan Guaranty Commissions.

THOMAS W. WILSON, Wilmington. Engineer; president and director, Delaware Electric Power Co., Delaware Power & Light Co., Delaware Bus Co., Southern Pennsylvania Bus Co., Wilmington Chamber of Commerce.

CHARLES FRANCIS ADAMS, Boston. Lawyer; president, Union Trust Co. Former Secretary of the Navy; treasurer, Harvard College, 1898-1910; president, Alumni Association, 1913. Skipper of "Resolute," winner of International Yacht Races.

EDWARD BALE, Jacksonville. President, Florida National Fisheries, Inc., which will build and operate the Florida exhibit at the Fair; connected with numerous other business enterprises in the state.

HENRY M. TALARMIN, Grand Rapids. President, American Seaming Co. Past president, Michigan Manufacturers Association; former member, State Wildlife and Relief Study Commission, Michigan Education Commission.

CLARA HOWELL, Atlanta. Publisher, Atlanta Constitution; member, board of directors, Associated Press; Georgia Board of Education. Served as captain in World War.

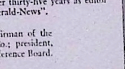
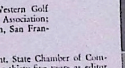
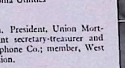
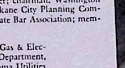
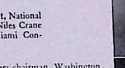
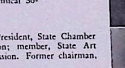
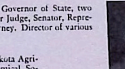
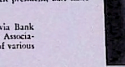
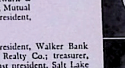
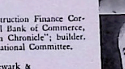
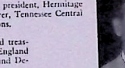
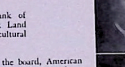
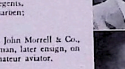
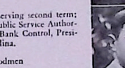
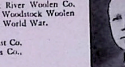
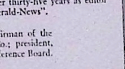
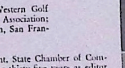
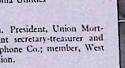
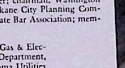
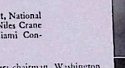
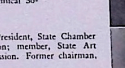
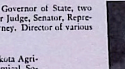
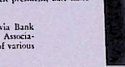
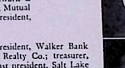
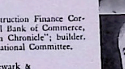
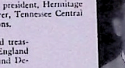
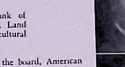
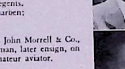
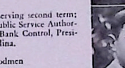
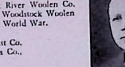
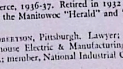
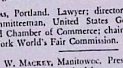
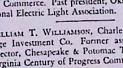
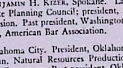
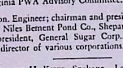
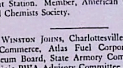
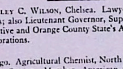
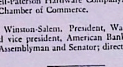
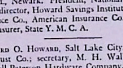
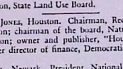
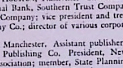
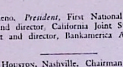
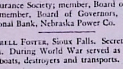
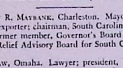
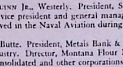
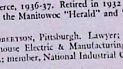
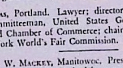
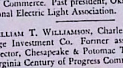
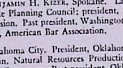
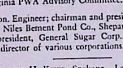
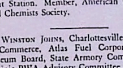
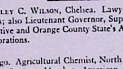
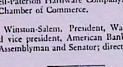
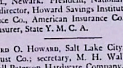
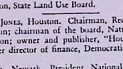
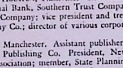
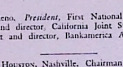
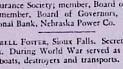
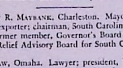
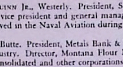
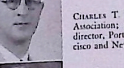
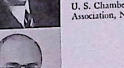
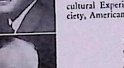
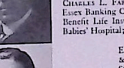
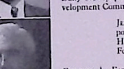
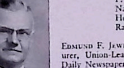
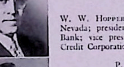
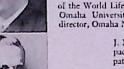
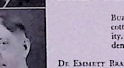
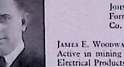
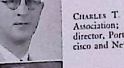
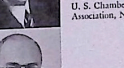
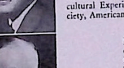
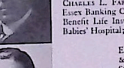
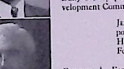
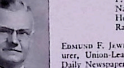
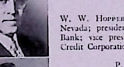
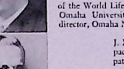
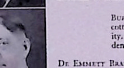
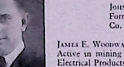
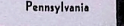
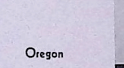
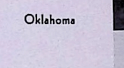
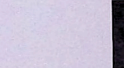
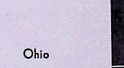
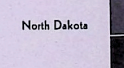
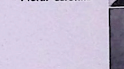
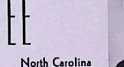
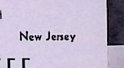
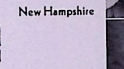
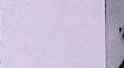
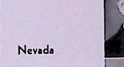
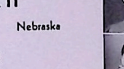
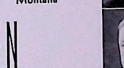
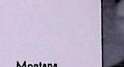
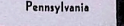
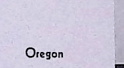
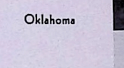
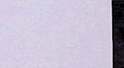
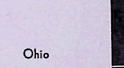
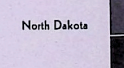
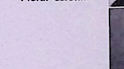
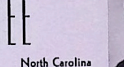
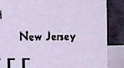
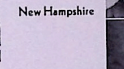
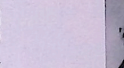
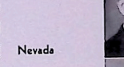
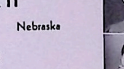
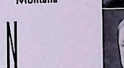
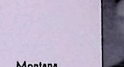
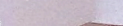
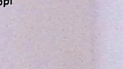
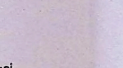
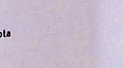
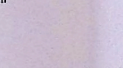
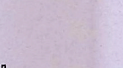
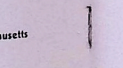
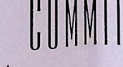
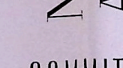
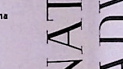
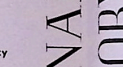
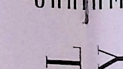
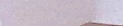
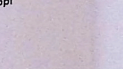
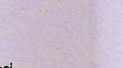
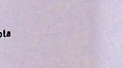
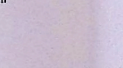
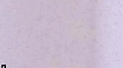
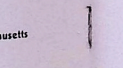
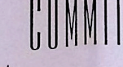
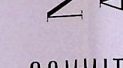
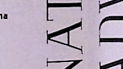
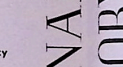
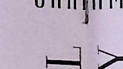
B. M. FERTON, Duluth. Organizer of many banks in Minnesota; now president, Minnesota National Bank of Duluth, chairman of board, Superior State Bank; member of the executive council, American Bankers Association.

REV. CUTLER DENNIS, Chicago. President, Union Gas & Electric Co., Metropolitan Gas & Electric Co., Davis Brothers, Inc., Amco-Progress, 1927-34.

R. E. KENNEDY, Jackson. President, R. E. Kennington Co., department store. Vice president and director, Kennington Investment Co., Kennington-Saenger Theatre; director, Love Petroleum Co. and other corporations.

ANDREW V. BROWN, Indianapolis. Lawyer; president, The Indiana National Bank, The Union Trust Company. Officer and director of numerous corporations and institutions.

THOMAS S. SMITH, St. Louis. President, Brantson's National Bank; vice chairman, Missouri State Fair Commission. President, American Bankers Association, 1935-37.



NATIONAL CHARMEN ADVISORY COMMITTEE

COMMITTEE

Alabama
Arizona
Arkansas
California
Colorado
Connecticut
Delaware
Florida
Georgia
Illinois
Indiana

Iowa
Kansas
Kentucky
Louisiana
Maine
Maryland
Massachusetts
Michigan
Minnesota
Mississippi
Missouri

Montana
Nebraska
Nevada
New Hampshire
New Jersey
North Carolina
North Dakota
Ohio
Oklahoma
Oregon
Pennsylvania

Rhode Island
South Carolina
South Dakota
Tennessee
Texas
Utah
Vermont
Virginia
Washington
West Virginia
Wisconsin

JOHN QUINN JR., Worcester. President, Swift River Woolen Co. Former vice president and general manager, Woodstock Woolen Co. Served in the Naval Aviation during the World War.

JAMES E. WOODMAN, Butte. President, Metals Bank & Trust Co. Active in mining industry. Director, Montana Hour Mills Co., Electrical Products Company and other corporations.

HUBERT R. MAYNARD, Charleston. Mayor, serving second term cotton exporter, chairman, South Carolina Public Service Authority. Former member, Governor's Board of Bank Control, President, Relief Advisory Board for South Carolina.

DR. EMORY BARNHART, Omaha. Lawyer; president, Woodson of the World Life Insurance Society; member, Board of Regents, Omaha University; member, Board of Directors, Akarwan; director, Omaha National Bank, Nebraska Power Co.

J. MORRELL POTTER, Sioux Falls. Secretary, John Morrell & Co. packers. During World War served as seaman, later engine, on patrol boats, destroyers and transports. Amateur aviator.

W. W. HOOPES, Reno. President, First National Bank of Nevada; president and director, California Joint Stock Land Bank; vice president and director, Bankers' Agricultural Credit Corporation.

P. D. HOLSTON, Nashville. Chairman of the board, American National Bank, Southern Trust Company; president, Heritage Hotel Company; vice president and treasurer, Tennessee Central Railway Co.; director of various corporations.

EDMUND E. JEWELL, Manchester. Assistant publisher and treasurer, Union-Leader Publishing Co. President, New England Daily Newspaper Association; member, State Planning and Development Commission, State Land Use Board.

JACK JONES, Houston. Chairman, Reconstruction Finance Corporation; chairman of the board, National Chamber of Commerce, Houston; owner and publisher, "Houston Chronicle"; builder. Former director of finance, Democratic National Committee.

CHARLES L. FOWBELL, Newark. President, National Newark & Loch Bank; director, Howard Savings Institution, Mutual Benefit Life Insurance Co., American Insurance Co.; president, Babes Hospital; treasurer, State Y. M. C. A.

EDWARD O. HORNUM, Salt Lake City. President, Walker Bank & Trust Co.; secretary, M. H. Walker Realty Co.; treasurer, Sargent-Peterson Hardware Company. Past president, Salt Lake City Chamber of Commerce.

ROBERT M. HEALY, Winterset. President, Wachovia Bank & Trust Co.; second vice president, American Bankers Association. Former State Assemblyman and Senator; director of various corporations.

STANLEY C. WILMS, Chelea. Lawyer. Governor of State, two terms; also Lieutenant Governor, Superior Judge, Senator, representative and Orange County State's Attorney. Director of various corporations.

T. H. HOOPES, Fargo. Agricultural Chemist, North Dakota Agricultural Experiment Station. Member, American Chemical Society, American Oil Chemists Society.

JAY WINSTON JONES, Charlottesville. President, State Chamber of Commerce, Alas Fuel Corporation; member, State Art Museum Board, State Army Commission. Former chairman, Virginia IWA Advisory Committee.

E. A. DEETZ, Dayton. Engineer; chairman and president, National Cash Register Co., Niles Bennett Pond Co., Shepard Niles Crane & Hoist Corp., president, General Sugar Corp., Miami Conservancy District; director of various corporations.

BENJAMIN H. KISER, Spokane. Lawyer; chairman, Washington State Planning Council; president, Spokane City Planning Commission. Past president, Washington State Bar Association; member, American Bar Association.

J. F. OWENS, Oklahoma City. President, Oklahoma Gas & Electric Co.; chairman, Natural Resources Production Department, U. S. Chamber of Commerce. Past president, Oklahoma Utilities Association, National Electric Light Association.

WILLIAM T. WILLIAMSON, Charleston. President, Union Mortgage Investment Co. Former assistant secretary-treasurer and director, Chesapeake & Potomac Telephone Co.; member, West Virginia Century of Progress Commission.

CHARLES T. HESS, Portland. Lawyer; director, Western Golf Association; member, United States Golf Association; director, Portland Chamber of Commerce; chairman, San Francisco and New York World's Fair Commission.

E. W. MACKAY, Manhows. President, State Chamber of Commerce, 1935-37. Retired in 1932 after thirty-five years as editor of the Manhowe "Herald" and "Herald-News".

ANDREW W. ROBERTSON, Pittsburgh. Lawyer; chairman of the board, Westinghouse Electric & Manufacturing Co.; president, Philadelphia Co. member, National Industrial Conference Board.

Aetna Life Insurance Co.
 Aetna Annuity Corporation
 American Chain & Cable Co.
 American Express Company
 American Radiator & Standard Sanitary Corp.
 American Telephone & Telegraph Co.
 American Tobacco Company
 Appard & Accessories Associates, Inc.
 Elizabeth Arden
 Baker & Company
 Beech-Nut Packing Co.
 Bethlehem Steel Corporation
 The Boston Company
 Carrier Corporation
 Christian Science Group
 Coca Pharmacutical Products
 Consolidated Edison Company
 Continental Baking Company, Inc.
 Thomas Cook & Son
 Covalator Company
 Dreyfus & Reynolds Company
 A. B. Dick Company
 DuPont de Nemours & Co.
 Duesenberg Brothers, Inc.

E. I. du Pont de Nemours & Co., Inc.
 Eastern Presidents' Conference
 Representing thirty-four railroads:
 Ann Arbor Railroad
 Baltimore & Ohio Railroad
 Bangor & Aroostook Railroad
 Bessemer & Lake Erie Railway
 Boston & Maine Railroad
 Canadian National Railway
 Canadian Pacific Railway
 Central Railroad of New Jersey
 Central Vermont Railway
 Chesapeake & Ohio Railway
 Delaware & Hudson Railroad Corp.
 Delaware, Lackawanna & Western R. R.
 Detroit, Toledo & Ironton Railroad
 Erie Railroad
 Lehigh & Hudson River Railway
 Lehigh & New England Railway
 Lehigh Valley Railroad
 Long Island Railroad
 Maine Central Railroad
 New York Central System
 New York, Chicago & St. Louis Ry.
 New York, New Haven & Hartford R. R.

New York, Ontario & Western Ry.
 Norfolk & Western Railway
 Pennsylvania—Reading Seaboard Lines
 Pennsylvania System
 Pere Marquette Railway
 Fortiorgo, Shawmut & Northern Ry.
 Reading Company
 Rutland Railroad
 Virginian Railway
 Walsh Railway
 Western Maryland Railway
 Wheeling & Lake Erie Railway
 Elgin National Watch Company
 Edison Electric Institute
 Ferro Enamel Corporation
 Firestone Tire & Rubber Company
 Ford Motor Company
 Gas Exhibit, Incorporated
 Representing the gas industry of the U. S.
 and including the following companies:
 Brooklyn Union Gas Co.
 Consolidated Edison Co.
 Public Service Electric & Gas Corp., N. J.
 Washington Gas Light Co.
 Boston Consolidated Gas Co.

IN MINIATURE: GAS EXHIBITS, INC., AND TEXTILE BUILDINGS

UNDER CONSTRUCTION: HALLS OF SHELTER AND COMMUNICATION

Rochester Gas & Electric Corp.
 Providence Gas Light Co.
 Long Island Lighting Co.
 Consumers Power Co., Jackson, Mich.
 Detroit City Gas Co.
 East-Ohio Gas Co., Cleveland
 Hartford Gas Light Co.
 New Haven Gas Light Co.
 Peoples Natural Gas Co., Pittsburgh
 Peoples Gas, Light & Coke Co., Chicago
 Cincinnati Gas & Electric Co.
 Indianapolis Gas Light Co.
 Knoxville Gas Co.
 Grand Rapids Gas Light Co.
 General Electric Company
 General Motors Corporation
 Glens, Incorporated
 Orem-Hillman Glass Company
 Corning Glass Works
 Pittsburgh Plate Glass Company
 Goodrich Tire & Rubber Co., Inc.
 Halvax Corporation
 Glaxo, Hansen Laboratory
 H. J. Heinz Company
 Hoover Company

Household Finance Corp.
 International Business Machines Corp.
 Jewelry Group
 Johns-Manville Corporation
 Kraft-Phenix Cheese Company
 Lederle Laboratories
 Libbey-Owens Ford Glass Co.
 Eli Lilly & Company
 Link Belt Company
 Julius Kupper & Co.
 MacLellan Publications, Inc.
 Manufacturers Trust Company
 Men's Apparel Quality Guild
 Metropolitan Life Insurance Company
 Monsanto Chemical Co.
 National Biscuit Company
 National Cash Register Company
 National Dairy Products Corp.
 National Electric Products Corp.
 New York City Chamber Committee
 New York City Clearing House Association
 New York Times
 The Petroleum Industry Exhibition Inc.
 American Oil Co.
 The Atlantic Refining Co.

Cities Service Oil Co.
 Gulf Oil Corp.
 Pure Oil Co.
 Richfield Oil Corp.
 Shell Union Oil Corp.
 Sinclair Refining Co.
 Socony-Vacuum Oil Co.
 Standard Oil Co. of New Jersey
 Sun Oil Co.
 The Texas Co.
 Tide Water Associated Oil Co.
 Radio Corporation of America
 John A. Roebling Sons Company
 Ray-Tex Co.
 Singer Sewing Machine Co.
 Standard Brands, Inc.
 Swift & Company
 Tanker Roller Bearing Company
 Underwood Elliot Feltzer Company
 United States Steel Subsidiaries
 John Wanamaker
 Western Union Telegraph Co.
 Westinghouse Electric & Manufacturing Co.
 Wilson & Company
 Y. M. C. A.
 Yale & Towne Manufacturing Company



APPAREL & ACCESSORIES

Joseph Love
president
Joseph Love, Inc.



The most comprehensive display of clothing and accessories ever presented at any exposition will be sponsored by this group. A corporation organized by the committee has taken a building site in the Clothing Zone containing 60,000 square feet and has retained William G. Mortney, former head of the Fair's Department of Exhibits and Concessions, as executive director. Manufacturers in the allied industries will join in portraying all phases of the art and business of clothing and adorning mankind. Central feature of the building will be a hall devoted to a fashion pageant depicting the history of clothing and including a glimpse into the future of costume and accessories. The committee represents seven-textile industries in the apparel and accessories trade. State committees also will be formed to assist in making both the exhibit and the Fair a success.



AUTOMOBILE

Lee J. Eastman
president
Packard Motor Car Company



Organized to make the Fair of greater value to the automobile industry and to coordinate the activities of the industry relating to the Fair, this committee includes leading executives in the metropolitan area.



AVIATION

Thomas A. Morgan
president
The Sperry Corp.



A dramatic display showing latest developments in the aviation industry, a pictorialization of its colorful history and a glimpse into the future of air travel is being planned by this committee, on which virtually every manufacturer and transport line in the country is represented. The present plan is to concentrate all aviation exhibits in one building which will be erected by the Fair itself.



COMMUNICATION

Walter S. Gilford
chairman of the board
American Telephone and Telegraph Co.



Designed to marshal all fields of communications behind the Fair, this committee includes among its members officials of the Post Office Department and of the great radio, telephone, telegraph and motion picture industries. It assisting Fair officials in solving many vital problems and is making valuable contributions to the planning and coordination of exhibits for the Communication Zone. Members of the committee will play an important role in publicizing and promoting the Fair through their respective industries.



COSMETICS

H. L. Brooks
president
Toilet Requisites Association



A joint exhibit by cosmetic manufacturers in an industry-sponsored exhibit hall is the objective of this committee. Plans are already well-advanced and the committee expects to develop one of the outstanding displays at the Exposition. Members include editors of trade publications and newspaper and magazine writers as well as leading figures in the industry.



NO EXPOSITION in history has ever had such a wealth of expert advice and assistance on tap as has the New York World's Fair, 1939. In addition to the members of the two National Advisory Committees, more than 10,000 men and women in the metropolitan area, experts in every field of human endeavor, are being enlisted to serve on local advisory committees. They constitute the Fair's volunteer reserve corps, standing ready to fill any breach in the ranks of the shock forces.

Some of these committees have taken over the organization of groups of exhibits for the Exposition. Others are being utilized as consultants by Fair authorities in planning displays and special events. Still others have been invaluable in helping to solve problems

of transportation, housing, foreign participation, construction and other phases of activity. All of them will be of great assistance in promoting and publicizing the Exposition. Their members will be the Fair's good-will agents, spreading the Fair's message by word of mouth, in their correspondence and in the publications they control.

In organizing these committees the schematic plan of the Fair is being closely adhered to. Each committee relates to some part of that basic plan, so that together they will sum up, as does the Fair itself, man's whole existence. At the present time twenty-four committees have been organized. A dozen others are in process of formation.

in every sphere have enrolled for service

DISTRIBUTION

John S. Burke
president
B. Altman & Co.



Department and specialty store executives and representatives of retail trade organizations comprise this committee, which is now considering ways and means of assisting in the promotion of the Fair.

EDUCATION

Dr. Harry Woodburn Chase
dean
New York University



This committee will serve as a sounding body to which Fair officials can turn for advice on educational exhibits as well as on ways of making the entire Exposition of greatest possible educational value.

ELECTRICITY

C. E. Stephens
vice-president
Westinghouse Electric and Manufacturing Co.



Members of this committee are a valuable source of advice to Fair engineers. From their laboratories they have contributed new developments in lightning, sound amplification and other phases of electricity, and they have also aided Exposition technicians in their own experiments. The committee is helpful in planning and coordinating electrical exhibits to eliminate duplication and to present a complete, graphic picture of the industry.

ENTERTAINMENT

John Golden
producer



This committee, covering every branch of entertainment as well as such related fields as dramatic criticism, will cooperate with the Fair's Department of Entertainment and Special Events in developing an unusual program of special activities. It will act as a clearing house for entertainment suggestions and ideas and is expected to sponsor on behalf of the Fair various entertainment projects without the ground.

FIRE PREVENTION

John J. McEllisott
New York City Fire
Commissioner and Fire Chief



Holding of an international fire tournament and world's fire protection congress at the Fair is under consideration by this committee. The tournament, it is expected, would draw fire fighting units from volunteer and paid fire departments in cities throughout the world, while the congress would bring together experts in the field of fire service from every nation as well as from all the states of the Union. The committee also has invited the International Association of Fire Chiefs to hold its 1939 convention at the Fair.

FOREIGN PARTICIPATION

Thomas J. Watson
president
International Business
Machines Corp.



This committee has rendered valuable service to the Fair Corporation in securing participation of the nations of the world in the Exposition. It has assisted in the selection of Fair Commissioners; aided the latter in making contacts abroad and been helpful in creating interest in the Fair among foreign business men and diplomats. Its contacts with foreign trade associations and chambers of commerce in this country have also proved extremely valuable. The committee is helpful in determining the type of exhibits to be sought from foreign countries and in securing foreign business and industrial exhibits.



LABOR RELATIONS

Matthew Will
vice-president
American Federation of Labor



Composed of representatives of every labor organization in New York City, this committee is serving as liaison unit between the Fair Corporation and the various trades. It is called on to prevent and adjust disputes and to insure the speedy progress of the construction program. It also has been active in promoting the sale of Fair bonds to organized labor and in keeping the latter informed of Fair developments. The committee has under consideration plans for a labor exhibit at the Exposition.

GOODWILL & PEACE

John E. Otterson
consulting engineer
former president, Paramount
Pictures, Inc.



Through the medium of the Fair this group proposes to spread the gospel of international goodwill and of the settlement of disputes by peaceful arbitration. The committee is considering the use of motion pictures as the most effective means of gaining across its message. Its program will demonstrate how arbitration can be utilized in international relations and how goodwill among nations can be increased by trade, cultural contacts, sports, and the promotion of international groups and organizations. It has been proposed that the committee sponsor a round-table peace conference at which every nation participating in the Fair would be represented.



MEDICINE & PUBLIC HEALTH

Dr. Victor Heiser
ophthalmic consultant in
Public Health Administration



The projected Hall of Medicine and Public Health represents the major work of this committee, which includes officials of medical, dental and public health organizations and of the medical departments of the City, State and Federal governments. The committee has developed a carefully controlled plan for sale of space in the Hall so that exhibits will present a dramatic and well-ordered picture of what is available to the average man in the way of prevention and cure of bodily ills and protection of health. Another phase of the committee's work will be the supervision of health conditions, medical facilities and similar matters during the Fair.



HOTEL

T. Elliott Tolson
president
Hotel Association of
New York City



The Hotel Advisory Committee will make a complete survey of hotel accommodations which will be available for Fair visitors, specifying price range, location and other necessary information. During the Exposition period it will cooperate with the Fair's hotel planning information service, and it also is expected to prove of great assistance in publicizing the Fair. Its members, among whom are representatives of every major hotel in the metropolitan area and at nearby shore resorts, will care for millions of Fair visitors in 1939, and it will be primarily their job to let it be known that New York can be a fair and gracious host.



MUSIC

Allen Wardwell
chairman of the board
Juilliard School of Music

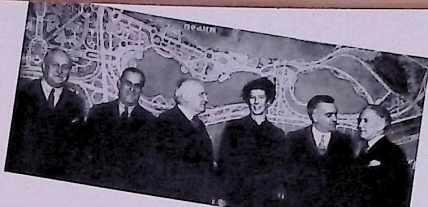


Plans for a great international festival of music are under consideration by this committee, whose members include leading composers, directors, critics, artists and music patrons. The program would include every kind of musical entertainment—opera, chamber music, oratorio, ballet, symphonies, folk songs, choral events and glee club presentations. The would be made of halls in New York City as well as on the Fair grounds, and great artists and musical organizations from every country would be asked to participate.



Dr. Kendall Emerson, managing director of the National Tuberculosis Association, addressing a meeting of the Advisory Committee on Medicine and Public Health.

At a meeting of the Advisory Committee on Music, left to right: Hermann Iron, Allen Wardwell, chairman; Dr. Walter Damrosch; Mrs. Vincent Astor, vice chairman; Marshall Field, vice chairman; and Edward Johnson, general manager of the Metropolitan Opera Association.



PATRIOTIC & HISTORICAL SOCIETIES

Nicholas Murray Butler
president
Columbia University



This group has been formed to assist Fair officials in developing the historical aspects of the Exposition. It will be of especial value in making available historical data and relics, particularly those relating to Washington's inauguration on April 30, 1789, which the Fair commemorates. Exhibits and contents of an historical nature will be checked by the committee to insure factual accuracy and it is expected to sponsor various pageants depicting great events in American history. One proposal under consideration is to enlist historical and patriotic groups throughout the country in a great national committee which will present such pageants of the past.



STATE SOCIETIES

Thomas Ewing
former president
Ohio Society of New York



Interest of state groups in the Fair will be encouraged by this committee. It will be consulted by Fair officials in arranging special "state days" at the Exposition.



TRADE ASSOCIATIONS & CIVIC AFFAIRS

Willis H. Booth
vice-president
Covantry Trust Co.



This committee brings together 147 metropolitan civic and business organizations in support of the Fair. It coordinates their work and encourages them to feature the Exposition in their enterprises, literature, annual functions, and other activities. The committee already has been active in support of public projects in which the Fair has been interested.



PUBLIC INFORMATION

Colby M. Chester
chairman of the board
General Foods Corporation



This committee will coordinate all forms of public information—advertising, radio, motion pictures, public relations—as they relate to the Fair. It is expected that members also will be helpful in advising as to the form various exhibits should take.



TRANSPORTATION

John Henry Hammond
president
Bangor & Aroostook Railroad



Many technical problems relating to transportation have been referred to members of this committee for solution. Rates and routes for construction materials, estimates of passenger traffic during the Fair, planning of excursions, providing increased facilities and contributing to the promotion of the Exposition are among the matters which have been or are being handled by the committee. Its members include heads of railroads, bus companies, traction and subway lines and taxi corporations.



RAILROADS

George Le Boullifier
vice-president
Pennsylvania Railroad



This group, functioning as a sub-committee of the Advisory Committee on Transportation, has rendered invaluable aid to Fair engineers both in anticipating and solving problems of visitor traffic and in raising construction materials to the site at minimum cost and maximum speed.



VETERANS

Milton Solomon
Past Kings County Commander
American Legion



Representing more than 400,000 ex-service men, this committee is arranging for erection of a Veterans' Temple of Peace at the Fair. The building will not only give physical expression to the ideal of peace to which veterans' organizations are dedicated, but will serve as a headquarters for visiting veterans of all nations and as a hall in which educational and historical exhibits will be presented. The site of the Temple, a six-acre lot in the Government Zone, was dedicated last summer.



REALTY

Charles F. Noyes
president
Charles F. Noyes Co., Inc.



Formed to advise the Fair Corporation on matters pertaining to real estate, this group is also proving of great assistance in getting New York groomed for the Exposition year and in publicizing the Fair.





The WOMAN OF IT

WOMAN will find herself in every nook and corner, in every cranny of the New York World's Fair 1939. She will not sit upon a pedestal, not be segregated, isolated; she will fit into the life of the Exposition as she does into life itself—never apart, always a part.

True, there will be a Hospitality Center sponsored by women, but it will not be a woman's building in any sense. It will be headquarters for both men and women; a meeting place for commissions and committees, for people from all lands. Its facilities will include a centralized information service with special interpreters, reception rooms for distinguished visitors, a hospitality lounge and an auditorium for special events as well as for meetings of organizations and committees.

The Hospitality Center is a project of the National Advisory Committee on Women's Participation, of which Mrs. Vincent Astor is chairman. Made up of 5,000 women whose background of accomplishment and soundness of judgment have brought them to real leadership in their communities, this committee sees in the Fair an opportunity to interest the world in a dramatic presentation of tomorrow's living. The work of the committee is planned by Miss Monica Barry Walsh, Director of Women's Participation, whose department is a clearing house for women's activities. The committee is organized by states, 100 members and a chairman in each state, and the activities of these state groups will be headed by Mrs. Dwight F. Davis.

With representation on all of the advisory committees, women will have a voice in every Fair project. In many their voice will predominate.

Thus, the Advisory Committee on Welfare is headed by a woman—Mrs. Sidney C. Borg—and includes in its membership representatives of the principal welfare and social service organizations in the five boroughs of the city. This committee will cooperate with the Fair's own welfare department in attending to the many needs which arise when hundreds of thousands of persons gather together in one area. Welfare services will include both preventive and protective measures, the care of lost and bewildered visitors, of children and young people and of non-English speaking persons, the proper policing of the grounds, the establishment

From top to bottom:

Mrs. Vincent Astor, social, civic and welfare leader, Chairman of the National Advisory Committee on Women's Participation, vice chairman of the Advisory Committee on Music.

Mrs. Dwight F. Davis, awarded the A. W. A. award for "eminent attainment" in 1934 in recognition for her formation of the Women's Organizational committee activities of the Advisory Committee on Women's Participation.

Mrs. Bert W. Hendrickson, authority on consumer problems, member and official of numerous consumer organizations. Chairman of the Advisory Committee on Consumer Interests.

Mrs. Sidney C. Borg, vice president of the Jewish Federation, chairman of the Jewish Big Sisters committee member for the Welfare Council, Chairman of the Advisory Committee on Welfare.

of information booths, the supervision of employee health and welfare and the handling of any emergencies which may arise. Welfare is a major consideration both during the building and operating periods of the Fair.

The Advisory Committee on Consumer Interests also has a woman as chairman—Mrs. Bert W. Hendrickson. This committee has prepared and will distribute a questionnaire from which will be drawn up a Taste Survey on the attitude, knowledge and experience of the consumer. It will sponsor one of the principal buildings at the Fair—the Consumer Interests Building, which will feature exhibits showing people how to spend their dollars to the best advantage. The committee will act in an advisory capacity in setting up principles to guide the Fair administration in the selection of exhibits and will itself arrange the focal exhibit, which will include a graphic display of all services now in existence to help the consumer. Members of the group include leading producers, distributors, editors and educators in the consumer field.

As for the physical aspects of the Exposition, women will find that Fair authorities have made provision for their comfort, well-being and enjoyment throughout the grounds. Long avenues shaded by tall trees, cool, beautifully landscaped courtyards, fountains on all sides, an abundance of rest rooms, benches beside quiet pools, all these will contribute to the pleasure the woman visitor finds in the Fair. Her esthetic sense will be charmed by the use of color and light which will make the Exposition a rainbow of brilliance by day and a sparkling, breath-taking spectacle by night. She will find herself as much drawn to the industrial exhibits as to the home displays in Tomorrow Town, since every area of the Fair will present some aspect of everyday living. And as a citizen of the world of today she will have a vital interest in the World of Tomorrow which the Fair will foreshadow, a world not alone in which life will be more livable but in which such ideals as peace and international good-will shall have been attained.

Meeting of the National Advisory Committee on Women's Participation. Around table from left to right: Mrs. Roger Sirous, Mrs. Sidney C. Borg, Mrs. Cornelius Kelley, Mrs. Winthrop Aldrich, Miss Monica Walsh, Mrs. Vincent Astor, Miss Frances Kellar, Mrs. John Sheppard, Mrs. Frank A. Vanderbilt, Mrs. George D. Hewitt, Mrs. William H. Purdy, Mrs. Emerson F. Cox and Miss Lena Madelin Phillips.



Airplane view of the central exhibit area showing (by arrow) location of Consumer Interests Building.



STATE CHAIEMEN NATIONAL ADVISORY COMMITTEE ON WOMEN'S PARTICIPATION

Appointments to Date

Connecticut—Mrs. Annie Burr Jennings, native of Fairfield where her family settled soon after the town was founded in 1636. She is charter member of the Annie Denton Burr chapter of the D.A.R. and first vice president of the National Society of The Colonial Daughters of America.



Iowa—Mrs. Hiram C. Hazelton Jr. of Red Oak, director of the Iowa State Historical Society; member of the Daughters of the American Revolution; first woman appointed on a State Board in Iowa, the Conservation Board. Former president, Iowa Federation of Women's Clubs.



Louisiana—Mrs. Joseph E. Friend of New Orleans, former president of the National Council of Jewish Women; twice chairman for the General Federation of Women's Clubs; now president of the New Orleans chapter, National Consumers League, and of the Proven Aid League.



Maine—Mrs. Clinton W. Davis of Portland, member of the board of the District Nursing Association, of which she was chairman for two years. She is a former member of the Portland Junior League and the Viscount Club of Boston.



Michigan—Mrs. Fred T. Murphy, of Grosse Pointe, formerly of Detroit, where she was for many years president of the Visiting Nurse Association, New president of the Detroit Civic Opera Society; vice-president of the Detroit Symphony Society, and chairman of the board, Women's Division, Detroit Community Fund.



Missouri—Mrs. George Gillhorn of St. Louis, identified with public endeavors for many years, notably campaigns for getting out-the-vote, improved educational facilities, elimination of child labor, better election laws, world peace, equality of public service, revised tax systems and adequate governmental services.



New Jersey—Mrs. Renee Schley of Ear Hill, first vice president of the New Jersey Women's Republican Club; former member of the New Jersey Corporation for Labor Control; actively engaged in community activities.



Northern New York—Mrs. George D. Hoar of Carthage, president of the Jefferson County Board of Child Welfare; vice chairman of the Thousand Islands State Park Commission; honorary president of the Northern New York Federation of Women's Clubs. Former president of the State Federation and representative of the Club-women.



Arizona
Mrs. Hubert H. D'Astousson
Tucson

Indiana
Mrs. Meredith Nicholson, Jr.
Indianapolis

Montana
Mrs. Thomas J. Walker
Butte

Delaware
Mrs. Alfred V. du Pont
Wilmington

Kentucky
Mrs. Samuel Herning
Louisville

Ohio
Mrs. Myron Wick
Cleveland

Idaho
Mrs. Margaret Cobb Alkire
Boise

Maryland
Mrs. Spaulding L. Jenkins
Baltimore

Oklahoma
Mrs. J. Wood Glas
Nowata

Illinois
Mrs. Katherine Fairbank
Chicago

Massachusetts
Mrs. Robert W. Lovett
Boston

Texas
Mrs. Overta Culp Hobby
Houston

Oregon—Dean Hazel P. Schwering of the University of Oregon, member of the State Fellowship committee of the American Association of University Women; state drama chairman of Oregon Federation of Women's Clubs, Associated with a number of educational groups in Oregon.

Pennsylvania—Mrs. Barclay H. Warburton of Philadelphia, first woman vice chairman of the Republican State Committee; Pennsylvania woman member of the Republican National Committee in 1924; founder and president of the Emergency Aid of Pennsylvania.

Rhode Island—Mrs. John Nicholas Brown of Newport, member of the Rhode Island Liquor Commission in 1927; presidential elector in 1930; member of the Advisory Committee of the Museum of Modern Art of New York; president of the Providence Community Concert Association.

South Dakota—Mrs. Karl Munds of Madison, former instructor at the Eastern State Normal School, former assistant program director at the Western Conference, University of Colorado; speaker for the State Central Republican Committee in 1936; leader in educational activities.

Tennessee—Mrs. George Fort Milton Sr. of Chattanooga, leader in the suffrage movement; first chairman of the Tennessee League of Women Voters; first chairman of the Legislative Council of Tennessee; president of the Tennessee Volunteers for Prevention of War; active in social and civic work.

Virginia—Mrs. Henry Fairfax of Richmond, vice president of the American Association of University Women, the National P. E. O. Sisterhood, Daughters of the American Revolution and the Federal Council of Churches of Christ in America; corporate member of the American Board of Commissioners for Foreign Missions.

Washington—Mrs. Stephen B. L. Penrose of Walla Walla, member of the American Association of University Women, the National P. E. O. Sisterhood, Daughters of the American Revolution and the Federal Council of Churches of Christ in America; corporate member of the American Board of Commissioners for Foreign Missions.

Hawaii—Mrs. Stanley Kennedy of Honolulu, known throughout the Territory for her interest in civic, philanthropic, cultural and welfare matters on the Island. She has been identified with many important activities for some time; is a successful business woman and a social leader in Honolulu.

Utah
Mrs. George S. Eccles
Ogden

Vermont
Mrs. Ralph Flanders
Springfield

West Virginia
Mrs. John A. Kennedy
Martinsburg

Wyoming
Mrs. Oliver Wallop
Big Horn

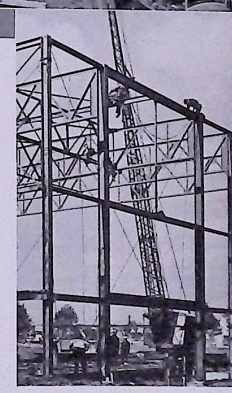


Above: Plasterers at work on the Hall of Mines and Metallurgy.
Top: Pouring concrete for the Trylon foundations. In the center of the picture is the circular concrete base of the Perisphere and beyond

MEMORANDUM
NEW YORK WORLD'S FAIR 1939, INC.
TO: The Board of Directors
FROM: The President
SUBJECT: CONSTRUCTION PROGRESS (C't'd)

is progressing rapidly — in fact, with 143 contracts completed or under way and new ones being let almost daily, we are now approximately one month ahead of schedule.
Of twelve major exhibit buildings under construction, two — Communications and Shelter — are virtually completed. Two service structures — the Administration Building and the north fire, police and first aid station — are occupied, and work is in progress on eight others. The fall tree planting program is winding up, bringing the total number of large-size trees planted to date to 1,216. Construction of bridges, water mains, sewers, fences and roads is being pushed. Concrete foundations for the Perisphere and Trylon have been poured, and erection of the two huge steel frameworks is scheduled to begin this month.
Total investment of the Fair Corporation to date in completed projects, current construction, purchase orders and commitments is \$10,500,000.

A definite construction schedule has been set up which provides for completion of all buildings by Jan. 1, 1939. January, February and March will be devoted to installation of exhibits and last minute embellishments. The month of April we have removed from our calendar, and the interval varying thirty days until the official opening on April 30 will be devoted to pre-trial operations, employee drills and previews.
This program is ambitious, but it must be remembered that at the construction peak next summer we will have 30,000 workmen on



that (left to right) the Hall of Business Administration, Administration Building and Hall of Communication.
Erecting steel framework for the Hall of Business Administration

PAGEANT in PLASTER

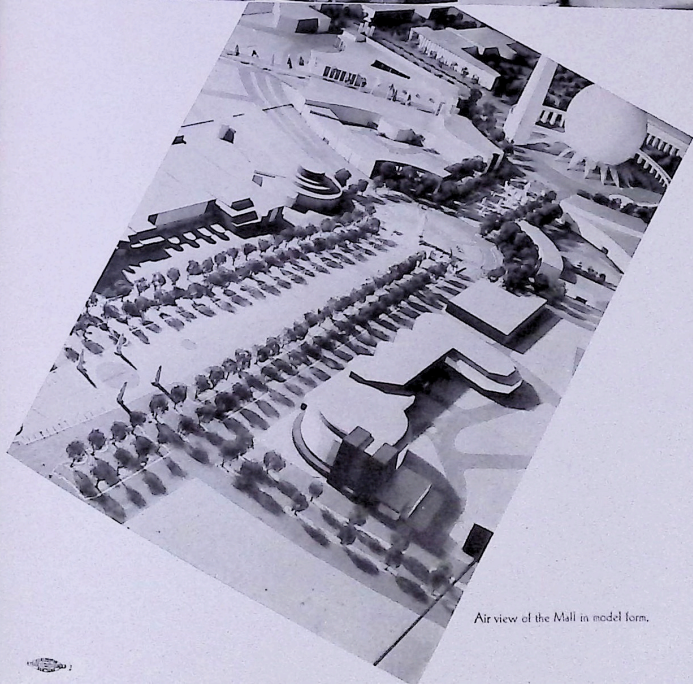
Along the great central mall of the Fair, extending from the Theme Plaza to the Government Zone, will be grouped heroic statuary representing figures of American history, mythology and allegory. Largest, most impressive will be a 65-foot portrait statue of George Washington by James Earle Fraser (model illustrated at left).



Paul Manship is contributing a 50-foot sundial and a fountain group depicting the "Moods of Time," one of the four figures in which is shown above.

On the facade of the Health Building will be an American folk-love group by Edmond Amateis which will include Johnny Appleseed, famous mid-western itinerant preacher, and Paul Bunyan, gargantuan north-woodsman (left).

The center picture shows a model of Leo Friedlander's group depicting Freedom of Assembly, Press, Religion and Speech. On either side is "Man Employing Mind" and "Man Conquering Evil," part of the "Labors of Man" group which George H. Snowden is executing for a Production Building.



Air view of the Mall in model form.

IN 1939

A World of Tomorrow in the Shadow of Manhattan's Skyline

