

THE DAWN OF A NEW DISNEY ERA

A Commemorative Pre-Opening Guide to Epcot Center

EPCOT CENTER

On October 1, 1982, Walt Disney's greatest dream Epcot Center — becomes reality. An \$800 million entertainment kingdom. Epcot Center is located on six hundred acres approximately two and a half miles south of the Magic Kingdom. Beyond its colossal gateway, you'll see wonders beyond your imagination.



- 1 Spaceship Earth presented by the Bell System
- 2 Universe of Energy presented by Exxon
- 3 Horizons (opening 1983) presented by General Electric
- 4 World of Motion presented by General Motors

- 5 Journey Into Imagination presented by Kodak
- 6 The Land presented by Kraft
- 7 The Living Seas (opening 1984)
- 8 CommuniCore presented in part by Sperry Univac

Within the realms of Epcot Center a family vacation will feature a series of adventures unparalleled in concept and form. Epcot Center represents the ultimate in Disney-"Imagineered" entertainment — an entertainment experience dedicated to mankind's most precious resource: Imagination.

Epcot Center is a celebration of ingenuity and innovation. Inspired by the incredible vision of Walt Disney and fueled by creative energy, Epcot Center marks the dawn of a new era in Disney entertainment,

bringing the art of the theme show to a new level of sophistication.

Twice the size of the Magic Kingdom, Epcot Center will encompass two distinct dimensions: Future World and World Showcase, each unique in theme and style. Together they will form a vast new showplace created to satisfy the imaginative appetites of the tens of millions of people of all ages from every corner of the globe destined to become "Epcot travelers."



- 9 Mexico
- 10 China
- 11 Germany
- 12 Italy
- 13 American Adventure
- 14 Japan
- 15 France
- 16 United Kingdom
- 17 Canada

presented by American Express and Coca-Cola

Future

The only structure of its kind anywhere, Epcot Center's colossal geosphere will tower 180 feet above the entrance to Future World. Once beyond this architectural wonder, the Future World visitor will know no boundaries. Epcot Center travelers will venture back through time to the dawn of history. They will plunge into the future and into the depths of our planet's oceans. They will traverse the land on which we live and race toward the farthest reaches of outer space.

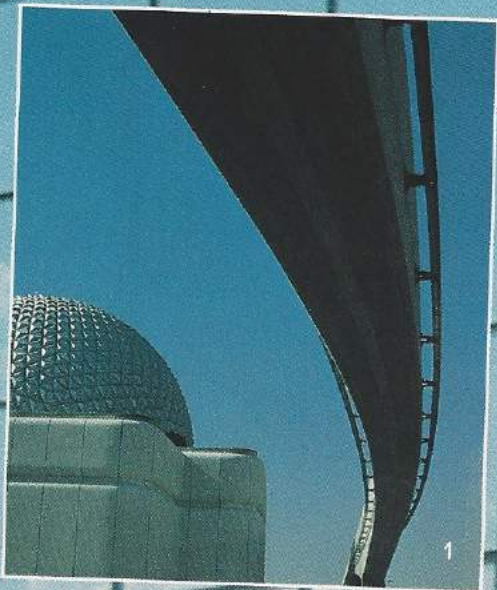
The forces of energy which power our world will become yet another domain to be explored — as will our imaginations, our modes of transportation, and the foods we eat.

Within Future World will be found wonders varying from the futuristic gardens of *The Land*, where tomatoes sprout from ceilings, to the primeval forests in *Universe of Energy*, where a grumbling volcano spews fumes and lava. Epcot Center travelers will visit a space colony in *Horizons* and marvel at the transportation systems of a century yet to come in the *World of Motion*.

Bringing the spectacle to life will be a cast assembled from the pages of history and the minds of Disney Imagineers. Dinosaurs and woolly mammoths in *Universe of Energy* will re-enact the energy story from their prehistorical perspectives. In *World of Motion* we'll meet the inventor of the wheel and another innovator, Leonardo Da Vinci, as he displays his "flying machine." And we'll be entertained by a Kitchen Kabaret of fantastic foodstuffs as they sing and dance the way to good nutrition in *The Land*.

World





Dynamic themes are the driving force of Future World. Major corporations representing a variety of industries have linked their best creative thinking to the entertainment talents of the Disney organization in a combined effort to explore the vital topics facing us today. Each pavilion will be a dazzling statement to the subject it presents.

Spaceship Earth presented by the Bell System. On a spiraling time journey through the vast interior of the 18-story geosphere, you will re-trace the history of communications. From the first images painted on cave walls to computers whose electronic pathways take you to the very edge of space, you'll see how communications has assured our survival through the ages.

Universe of Energy presented by Exxon. Using the most complex film system ever developed, and a multitude of dazzling special effects, the Universe of Energy will take you through the great geologic upheavals that enfolded fossil fuels deep within the earth — up to the present — and on to examine energy sources of the future.

World of Motion presented by General Motors. Three shows in one, World of Motion will take you on a zany ride through the history of transportation. From there you'll enter CenterCore, a stunning, six-story-high kaleidoscopic view of a futuristic city. The show ends in the General Motors TransCenter, which will showcase advanced concepts for present and future transportation systems.

1.

In 1981 work began to extend the Walt Disney World monorail network to Epcot Center. The eight-mile extension circling Future World will enable guests to travel freely to and from the Magic Kingdom, the Contemporary Resort, the Polynesian Village Resort and Epcot Center.

2.

Appropriately, World of Motion will be housed in a wheel-shaped building. Approximately 320 feet in diameter and 60 feet high, the pavilion will present a tongue-in-check "road show" highlighting milestones in our ever-accelerating mobility.

3.

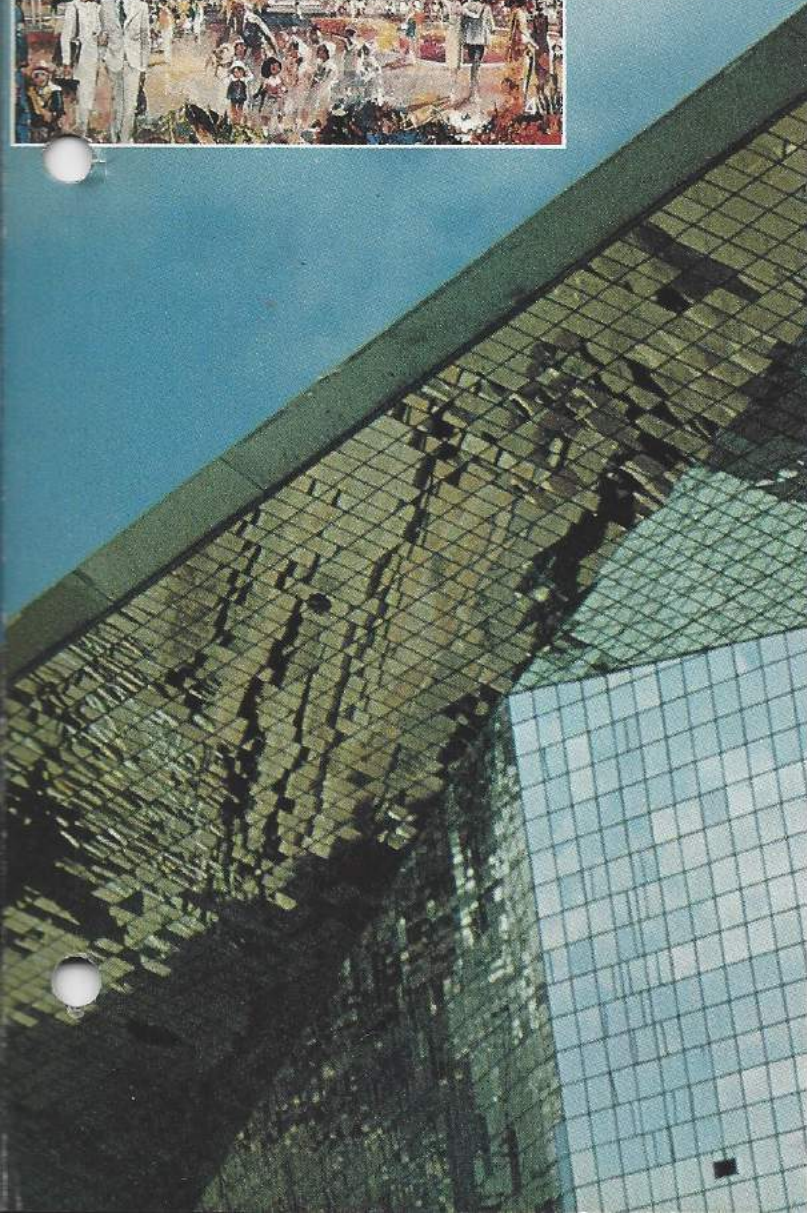
Technology and people come together and make friends in an inviting cluster of buildings known as CommuniCore. The Community Core of Future World, CommuniCore will welcome guest participation in exhibits that enable you to converse with computers, cast your opinion on current issues, and select and preview travel plans via videodisc, to name a few.

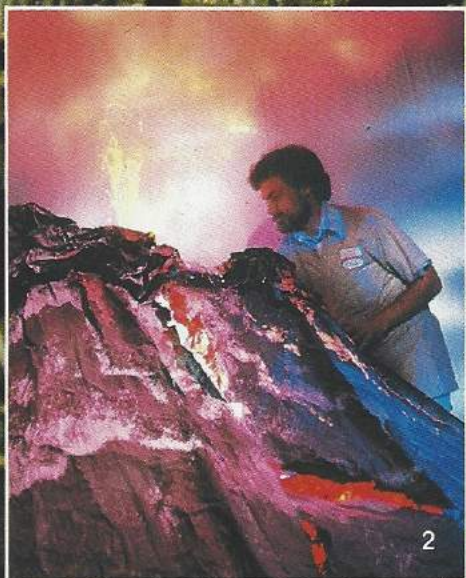
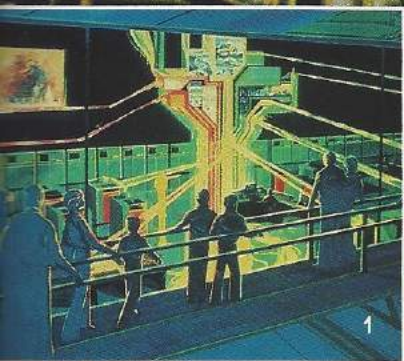
4.

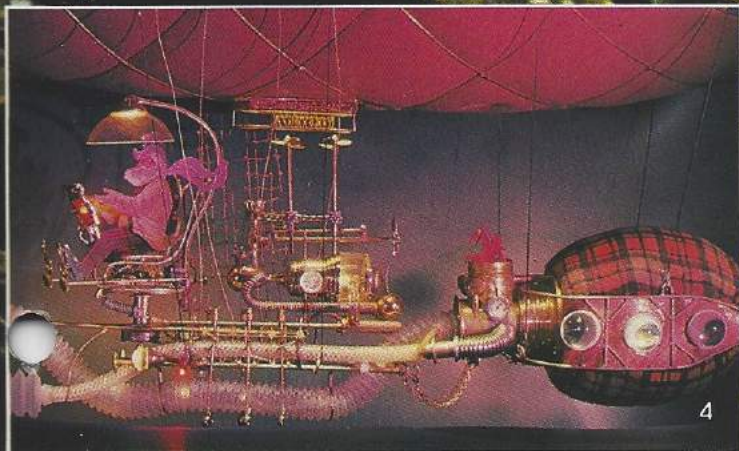
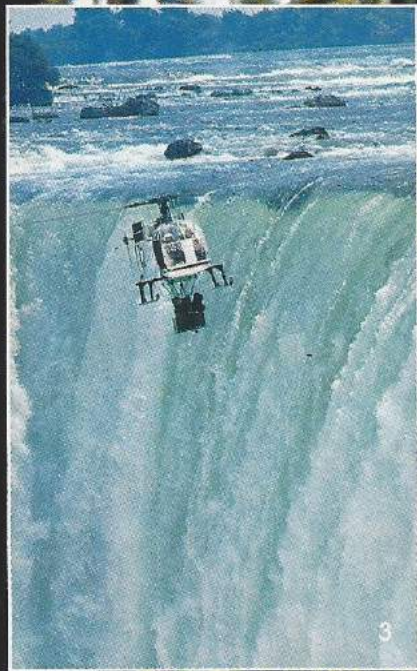
Early plans for Spaceship Earth called for the world's largest geodesic dome; but the concept of an actual sphere raised completely off the ground prevailed. Looming 18 stories above Epcot Center, the million-pound "geosphere" will be the first such structure ever built.

(full photo)

The handsome 300-foot-long Universe of Energy is located just to the left of Spaceship Earth. The building's massive mirrored walls not only reflect the surroundings, they'll reflect an energy story that's certain to dazzle Epcot Center visitors.







The Land presented by Kraft. Covering six acres, The Land will house a boat ride through various climates of the world; greenhouses focusing on futuristic farming; a lively "Kitchen Kabaret" musical review; a provocative cinematic presentation; a "Farmers' Market" that features sandwiches and snacks; and the "Good Turn," a unique revolving restaurant specializing in regional dishes from across America.

Journey Into Imagination presented by Kodak. The fantasyland of Future World, Journey Into Imagination will take you on a fantastic voyage through the creative process. In a fun-packed electronic factory called Image Works, you'll try your own hand at solving the secrets of creativity. And at Magic Journeys Theatre, you'll see the largest — and perhaps most captivating — three-dimensional motion picture ever produced.

Epcot Computer Center presented by Sperry Univac. In Future World's CommuniCore you'll discover an up-close and entertaining look at the computer technology that helps run Walt Disney World and puts more than a thousand Audio-Animatronic performers through their paces.

Horizons presented by General Electric (opening 1983). Presenting the first show ever to let you write the ending of your choice. Preview four family lifestyles of the 21st century and choose one for yourself. Then you'll wind through an 8-story "Omnisphere" that surrounds you with images of everything from a space shuttle blasting off to a DNA molecule unfolding.

The Living Seas (opening 1984). One of Disney's most challenging projects, The Living Seas will take you on an underwater journey to a futuristic Sea Base at the bottom of the world's largest saltwater aquarium, where divers and dolphins pool their knowledge for science.

(full photo)

Looking like a vast subterranean root system, the scaffolding inside The Land supports construction workers assigned the "mission impossible" of assembling Epcot Center's largest show facility. By the time plans were finalized, The Land pavilion had grown to cover six acres.

1. From a balcony overlooking Computer Central, visitors will watch as Walt Disney World technicians operate the computers which help keep the vast Vacation Kingdom running smoothly.
2. A special effects technician tests an "improved" batch of lava destined for the Universe of Energy. The glowing — but harmless — lava will stream out of a volcano within arm's reach of guests. And with the help of a Disney-developed "smellitzer," the volcano will shoot out fumes as well.
3. Disney cameras film a wide 220 degrees while suspended from a helicopter hovering above the raging waters. The footage will be part of the "new generation" of CircleVision films that help bring Future World's adventures to life.
4. Flying through the universe in his preposterous-looking Dream Vehicle, our host of Journey Into Imagination, Dreamfinder, together with his impish sidekick, Figment, is on an idea-gathering mission, collecting the raw material of imagination to be stored and later recombined into new ideas and inspirations. Asserting that imagination has no bounds, Dreamfinder remarks, "One idea always leads to another."

World S

If it would take a lifetime of vacations to explore the diverse countries of the world, discovering within each its own special ambience, charm and mystique. For most people, such adventure lives only in a dream. For travelers to Epcot Center's World Showcase, it will be a dream come true.

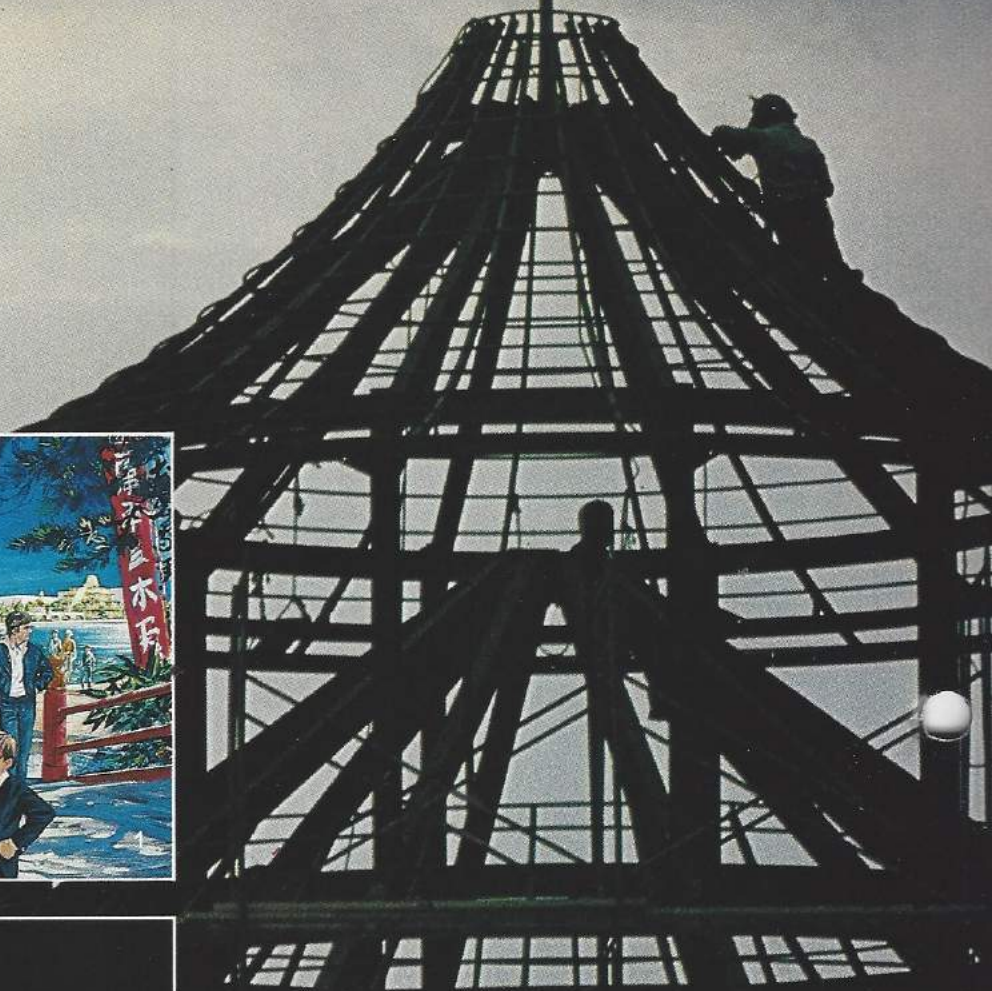
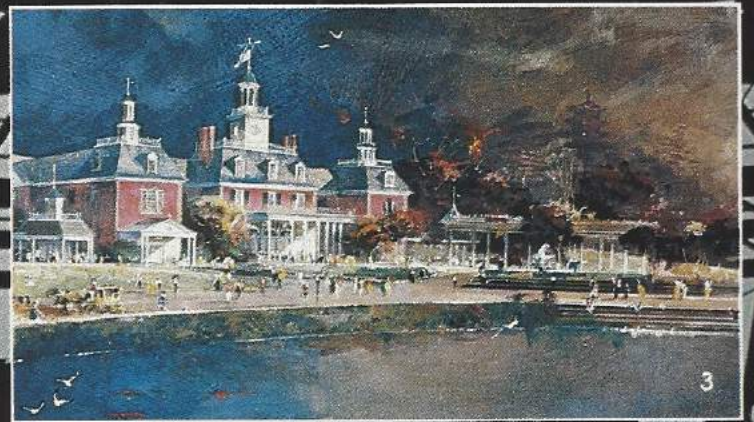
Here, amidst nations standing in friendship beside a broad lagoon, you will live in one day what only weeks of world travel could surpass. You'll follow the roads leading to Rome. Lunch in a Bavarian biergarten during Oktoberfest. Explore the interior of a Mayan pyramid. Cross the vast expanse of Canada and the Great Wall of China. Dine in gourmet splendor under a moonlit Eiffel Tower. Join Ben Franklin and Mark Twain for a soaring historical overview of America and her promising future. And more.

In World Showcase, Canada, Mexico, Japan, China, France, the United Kingdom, Italy and Germany will be brought to life through the creative magic that is the hallmark of Disney showmanship. Central among these nations will stand the American Adventure, its position reinforcing America's uniqueness as a "nation of many nations." In a theatrical production unparalleled in Disney annals, the American Adventure will combine large-screen projection, inspiring music and special effects with performances by the most lifelike Audio-Animatronic figures ever developed.

Like an Impressionist painting, this photograph captures the almost magical quality that surrounds the World Showcase pavilions. Each country-in-miniature will be so authentic in detail that a tour will leave you feeling you've experienced the real thing. Partially completed, the United Kingdom (right) and France (left) sleep in the early morning light.

nowcase







East and west of the American Adventure, along the promenade, you'll discover other exciting shows and attractions, plus restaurants and shops unique to each nation. Dine at Les Chefs de France and savor the gastronomic masterpieces of superstar chefs Paul Bocuse, Roger Vergé and Gaston Lenôtre. Or dine as the Romans do — at L'Originale Alfredo Di Roma, where singing waiters serve such epicurean delights as the Maestro's own Fettucine Al'Alfredo. In Mexico, you'll enjoy the famed cuisine of Mexico City's incomparable San Angel Inn. In Japan's Restaurant Mitsukoshi, watch Japanese master chefs create culinary magic in spell-binding tableside presentations.

As of October 1, 1982, World Showcase comes alive with entertainment. Hundreds of performers — from Canadian log rollers to Tyrolian yodellers and strolling troubadours — will keep you amused and enchanted. From France come white-faced mimes and street musicians... from Italy, the farcical players of the Comedia Dell'Arte.

At the United Kingdom, you'll meet the Pearly Kings and Queens and an Elizabethan poet named Will Shakespeare. A Candy Man from Japan adds a light-hearted touch as he magically creates herons and unicorns from his treasure trove of rice toffee. Mariachi players serenade you at the cantina in Mexico.

(full photo)

Silhouetted construction workers lay the steel skeleton for the Temple of Heaven, the focal point of the China pavilion. The completed structure will serve as a CircleVision theatre presenting spectacular, never-before-filmed footage of the dramatic landscapes, architecture and culture of the People's Republic.

1.

The elegance of old Japan is reborn in World Showcase. Beyond the great vermilion torii gate you'll find an exquisite five-story pagoda fashioned after the famous eighth-century Horyuji temple in Nara, Japan. Formal bonsai gardens carved with paths, a meandering stream and waterfall surround it — the very essence of tranquility.

2.

Two of this country's most eloquent spokesmen, Ben Franklin and Mark Twain, are our hosts for the American Adventure. Uncannily lifelike, the two Audio-Animatronic figures are capable of thousands of combinations of movements which, in Ben's case, include walking.

3.

This stately Federalist mansion will be home to the American Adventure, perhaps the most inspiring theatrical production ever conceived. The show tells the story of a nation of dreamers and doers whose ongoing pioneering spirit promises that the true American Adventure lies on the frontiers of the future.

4.

Where else could you celebrate Oktoberfest every day of every month? Germany's Biergarten in World Showcase will keep Oktoberfest in full swing, with beer in litre-high steins and an oom-pah band playing festive German music.



In Canada and China Circlevision cameras will take you on a magic carpet ride through some of the most spectacular scenery ever filmed. At the French Republic Theatre you'll journey to France's most famous locales while classical music by the finest French composers fills the halls. In Mexico you'll embark on a boat ride through Mexico's colorful past, discovering along the way the festival and dance of the great Mayan, Toltec and Aztec civilizations.

Even shopping will become its own form of entertainment. You'll find an extraordinary number of boutiques, like the biscuit, toy and china shops of the United Kingdom and the Neapolitan leather and pottery shops of Italy. Japan's Grand Shishinden Hall will house a department store by the internationally-celebrated Mitsukoshi — a name synonymous with the finest in Japanese art and industry since 1672. Numerous artisans will present their wares as well: The Hummel craftsmen of Germany, the Northwest Indians of Canada, calligraphers from China and Japan — and a World Showcase of other surprises.

Whether out for a stroll in the meditative Japanese gardens or caught up in the merriment of Germany's Biergarten, you'll meet people whose native countries form the World Showcase community. Working together in a true family of man, these young adults will be the binding spirit of Epcot Center — a spirit that calls for international fellowship for the present world and the future world ahead.

(full photo)

Scaffolding flanks the dramatic architecture of the Italy pavilion where World Showcase visitors will re-discover some of the world's most famous crafts, cuisine and cultural attractions.

1.

Only in Epcot Center's France pavilion will Parisians once again be able to cross the Pont des Arts or shop in the Marketplace des Halles. These two venerable landmarks have long since vanished from the French capital.

At Epcot Center they will be part of an area designed to recall the flavor and romance of Paris at the turn of the last century.

2.

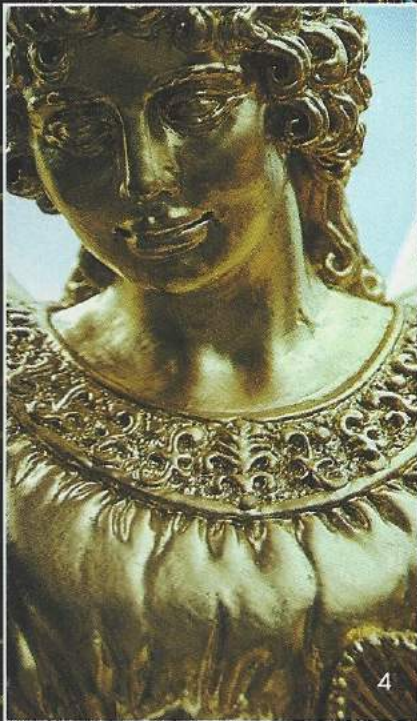
Rising in a series of steps thirty-six feet above a lagoon, an ancient Mayan temple will be the centerpiece of the Mexico pavilion.

3.

The Hôtel du Canada, modelled after Ottawa's Chateau Laurier, rises from the serene and verdant landscape of the Canada pavilion. One of the first stops after the exciting trek through Future World, Canada and her splendid gardens will provide a welcome respite for Epcot Center travelers.

4.

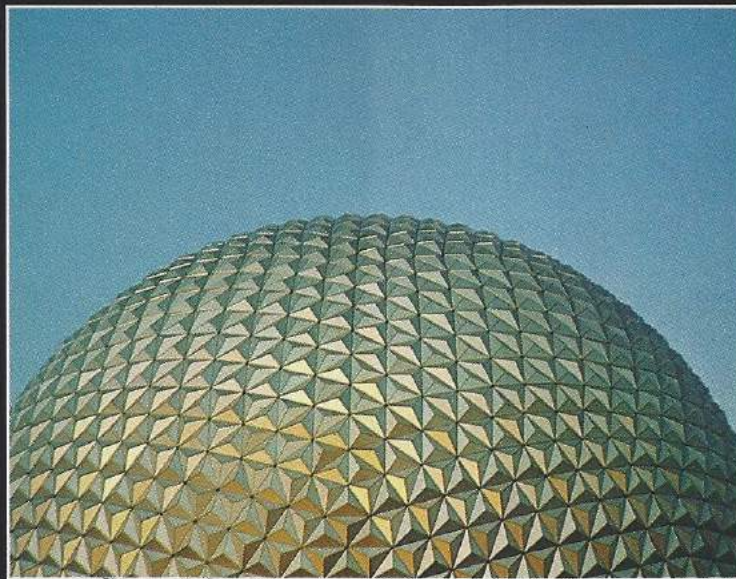
The Disney tradition of attention to detail in every design element, no matter how small or remote, is evidenced by the Venetian angel crafted for the Italy pavilion. Standing atop a hundred-foot-high bell tower, the exquisitely sculpted figure will probably go unnoticed, except by the angels themselves.



Dreamers and Doers

"If we can bring together the technical know-how of American industry and the creative imagination of the Disney organization, I believe we can build a community that more people will talk about and come to look at than any other area in the world."

— Walt Disney



• American Express • Bell System • Coca-Cola • Eastman Kodak • Exxon •
General Electric • General Motors • Kraft • Sperry Univac

Walt Disney World®
EPCOT
CENTER