



ImagineNews

September 18, 1981

The United Way

On September 28, 1981, the WED & MAPO United Way Campaign is slated to begin. Division Coordinators have been selected and are now planning their strategies for a WED/MAPO competition that will award special recognition to the Division with the most employee participation.

This year our goal is \$55,000.00 and the important thing to remember as the campaign gets under way is that in pledging our goal we help the fight against cancer, heart disease, and alcoholism; aid disaster victims, provide training for the mentally and physically handicapped, and offer special programs for families through family day care centers and counseling services.

So when your Division Coordinator contacts you, take a moment from your day and experience the spirit of giving. Thanks to you it works for all of us.

This year's United Way Division Coordinators are:

Frances Geisen	Creative Development
Mary Ellen Hoff	Facilities Engineering
Susan Heyer	Show and Ride Engineering
Carol Zuber	Architectural Prod/ R & D
Tim Hickman	WED Production
Rick Golding	MAPO Manufacturing
Bill Alexander	Tujunga
Clarice Wynecoop	Employee Relations
Loretta Andrews	RETLAW
Lois Dabio	TDL Administration
Donna Greenley	Project Management
Von Johnson	Administration



No Belly-up At Tujunga

"WHAT IS REQUIRED IS IMAGINATION AND IMAGINATION KNOWS NO ENEMY BUT TIME" (Maallem Barrahel)

If, when bringing an idea from conception to completion, you find time as your only enemy, you might count your blessings. And if you worked on SpaceShip Earth's *Islamic Library*, which was just completed this August at WED Tujunga, not only were your blessings counted, but your prayers may have been answered as well. For when the buy-off came, it was out with the worry and long hours, and in with the belly-dancer.

Sarina, dressed in beige and red, swirled onto the *Islamic* set, completing an already perfect atmosphere. Where were the forty thieves, Aladdin and the Lamp? They were never missed.

A hard working Tujunga crew had Richard Vaughn of Show Design to thank for this reward befitting a job well done.....a reward with an *Islamic* flair.

(Contributed by DIANE BIGLER, WED Tujunga).

What's An EDP?

At the request of WED/MAPO upper management, a committee has been established which will be responsible for defining and prioritising the EDP/MIS (Electronic Data Processing/Management Information Systems) needs of WED and MAPO.

Co-chaired by STEVE BILLS, Director of Finance & Services, and FORREST TELLESON from MIS at the Studio, this committee will meet as required to consider EDP requests, hear presentations, and make decisions. After priorities have been set, this EDP Review Committee will set forth and monitor a plan to systematically meet the EDP/MIS needs of WED & MAPO.

A report of all activity will be made to the WED & MAPO Steering Committee.

Forum

From 5:00 to 7:00 p.m. on Tuesday, August 25, 1981, MARTY SKLAR, Vice President of Creative Development; RANDY BRIGHT, Director of Script and Show Development; PAT SCANLON, Director of Research and Futures Planning; and George Rester, Director of Architectural Concept Design, met with approximately 50 employees for an informal session of question and answers. The topics that were covered included: Pavilion sponsorship, future projects, "40 acres", EPCOT development, the EPCOT book, and the importance of EPCOT to the future of the company.

The evening proved to be a stimulating exchange of questions and ideas for all who attended.



A Better Way

Once again a WED & MAPO employee has come up with "a Better Way." PATRICIA MORGANELLI (Chief PBX Operator at WED Tujungga) says, "To page my people here at Tujungga, it is necessary to have the paging volume at full force. Since the paging and music are controlled with the same switch, it is impossible to ever turn the music on because it would damage our hearing. It seems foolish to pay Musak a monthly charge for something we can not enjoy."

This idea was accepted by The Better Way Committee. Thanks Pat for taking the initiative to contribute to the improvement of the overall employee experience here at WED & MAPO.

Tag It

Just a reminder to those of you who forget to wear your name tags while on property, ...please remember. Not only will you save a preoccupied and forgetful fellow employee a moment of embarrassment, you will also continue to contribute to an important, informal security check when you enter any of the buildings. Thank you.

For The Birds

"Florida's citrus industry will continue for another five years in its sponsorship of The Sunshine Pavilion." So says Bob Bobroff in an article on Agriculture and Citrus. The Sunshine Pavilion, better known in "The Industry" as Jose's Hangout, houses the TIKI BIRDS at Walt Disney World.

For The Archives

HERBIE RYMAN, cornered in a main hallway by three of WED & MAPO's beautiful women, winked at a passerby and said,

"It's true, good things do come to those who wait, ...but.. why did it have to take so long?"

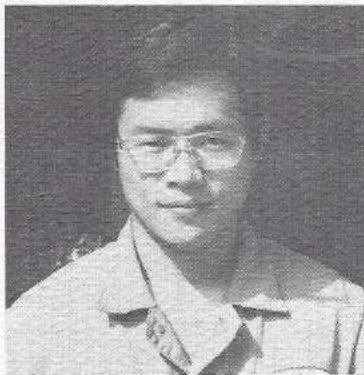
Sayonara

Friday, July 31, marked the last day of WED/MAPO training for the Oriental Land Company's three Production Coordinators, *YOSHI SHITARA*, *KIYO OGAWA*, and *HIROSHI TSUCHIE*.

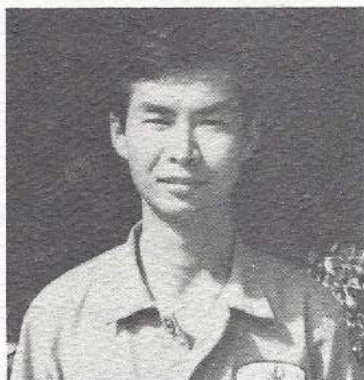
For the past eight months these trainees have been developing their expertise within the WED Coordination Department, and many of us have watched them become important members of the project team.

All of us involved in the TDL effort miss these fine workers, and we wish them well as they continue their training at Disneyland and at Walt Disney World.

(Contributed by *STEVE NOCETI*, TDL Administration).



YOSHI SHITARA



KIYO OGAWA



HIROSHI TSUCHIE

Admininews

Motor Pool News

Concerning the continued increase in requests for vehicles from the WED/MAPO Motor Pool, Keith Bunch, Warehouse Manager, suggests that the following guidelines be observed:

* Vehicles are available for business purposes Monday-Friday (8 to 5) by request with Roger Hoyt at the Warehouse (7231)

* Overnight or weekend vehicle use must have prior approval. Check with Roger Hoyt for details.

* Please reserve vehicles 24 hours prior to use (when possible) and observe requested scheduled times for both pick-up and return.

* If any problems are encountered during vehicle use (such as breakdowns or other delays in returning the vehicle as scheduled) please notify Roger Hoyt or Jim Williams as soon as possible.

* When vehicles need gas (during use) we would recommend refueling with a credit card or personal funds and we reimburse the vehicle user for this cost. (Must have receipt and be business related).

* If there are any questions concerning the use of the WED/MAPO Motor Pool, please contact Roger Hoyt on extension 7231.

* Thank you.

Phoney Business

The WED Mail Room now has its own telephone number, extension 6507. If you have any questions or problems call 6507 and ask for Randy Iliff or Jim Williams.

Please note that the Security phone number in the WED/MAPO book is 4295 not 7797. You can call 4295 for questions or general information. If you have an EMERGENCY, dial Emergency number 3111.

Debuts



Please join us in welcoming the following new members to the WED & MAPO team: (In the back row going upstairs) *ERIC SCHMIDT*, Show Design; *JOE GARLINGTON*, Lighting/Special Effects; *AILEEN KUTAKA-BARKLEY*, Library; *RHONDA STARKS*, Disney University; *MARTY SCHWARTZ*, Lighting/Special Effects; *ALLEN McMAHAN*, Plastic Fabrication; *SHARON FOLEY*, Coordination; (Front row, left to right) *KRISTIE ANDERSON*, Show Production; *SAMMY KATANO*, Lighting/Special Effects; *RICK BROGGIE*, Hydraulic Shop; *CHRISTINE TISDALE*, Administration; *CARLTON DAVIS*, Lighting/Special Effects; *MARIE KELLEGHAN*, Project Planning.

Don't forget! October 1, 1981 is the deadline for all applications for the annual Disney College Scholarship.

Applicants must be high school seniors who are graduating in the Spring or Summer of 1982, and their parent or guardian must be a full-time employee with at least one year continuous service with the company.

If you have any questions you can contact the Disney University for more complete information.



Also new to our staff are: (in the back row from left to right) *DON BRUNSON*, Special Services; *JIM DOYLE*, Lighting/Special Effects; *SHAWN BARRETT*, Warehouse; *AL WIEBE*, Lighting Special Effects; *GEORGE RAZSADIN*, Electronic Engineering; *LAUREL RHODES*, Disney University; *KATHLEEN NUNEZ*, Disney University; *ALBERT FERNANDEZ*, Special Services; *ROSE LOVELAND*, Administration; *THERESA VILLASENOR*, Library; *SUSAN HEYER*, Quality Control; *DARYL WARDEN*, Special Services; *GEORGE SCHMIDT*, Lightning/Special Effects; *DAN NIELSON*, Technical Standards.

The Imaginews is looking for articles, cartoons, or anything else that a creative WED/MAPO Imagineer can come up with that communicates relevant information and current news items to fellow employees.

Send all contributions (paper only please) to

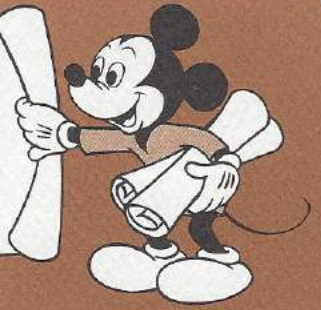
Imaginews
Disney University
Sonora



WED & MAPO Imaginews
Editor: Valerie Warner
Assistant: Kathleen Nunez
Graphics: Fred Miwa
Disney University, extention 4201

WED MAPO

Imaginews



October 1, 1981

365 Days To Opening

Because we are now in the final construction and production phase of the EPCOT Project, this issue of the *Imaginews* is dedicated to the Project Manager, who together with the Project Teams and the support of all of us, will be responsible for what will be opening in EPCOT on October 1, 1982.

Featured in this issue, is an interview with the man behind the Managers, Jim Nagy, Project Director for EPCOT.

The *Imaginews* staff canvassed a wide variety of WED & MAPO employees and asked, "On October 1, 1981, there will be 365 days left to EPCOT opening. With this in mind, if you could ask Jim Nagy a question, what would it be?"

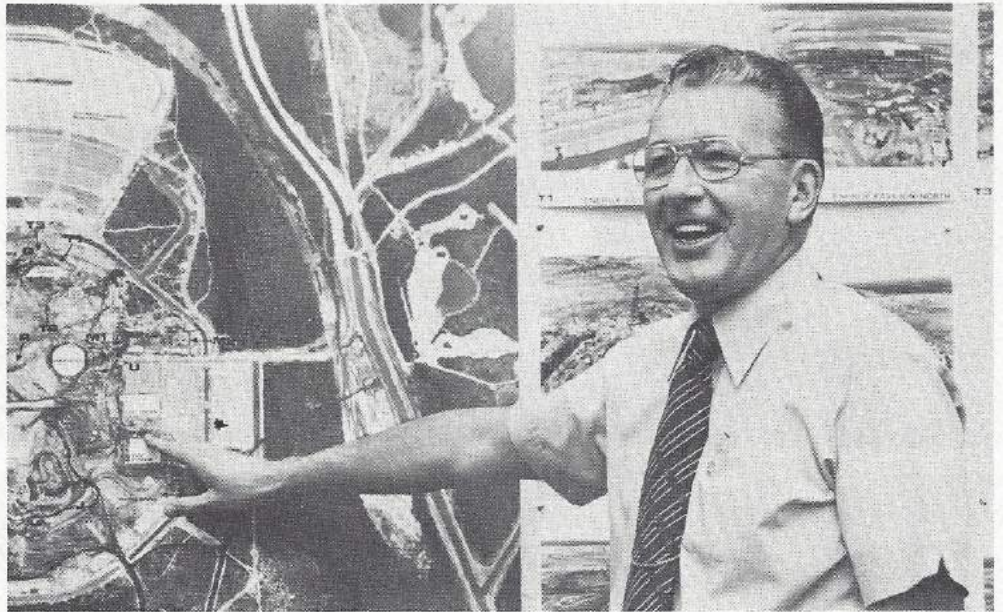
The following interview is a result of those questions.

But before we begin the interview, something else needs to be said. With 365 days left until EPCOT opens, it is important that we not only continue to support the Project Managers, but that we also take a moment to appreciate what it is that each of us individually is contributing to this monumental project.

We ARE Doing It!!!

And Now.....

Imaginews: Jim, something that everyone in the whole



company wants to know is, what will be in EPCOT opening day?

Jim: That is a very apropos question. The Executive Committee asked the same question and we gave them a presentation on September 8, 1981.

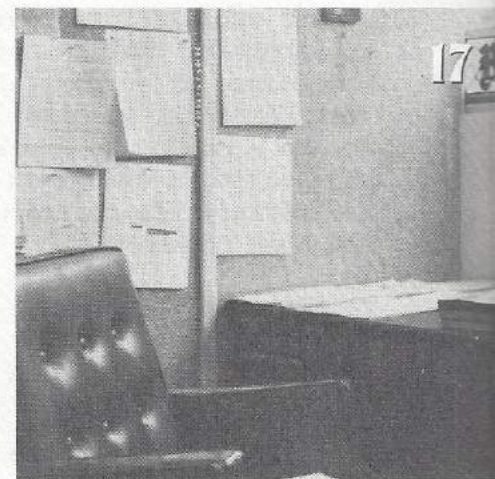
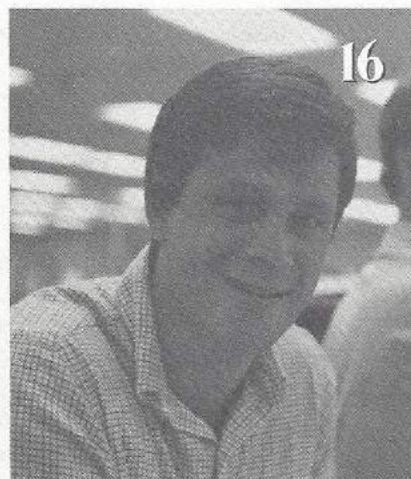
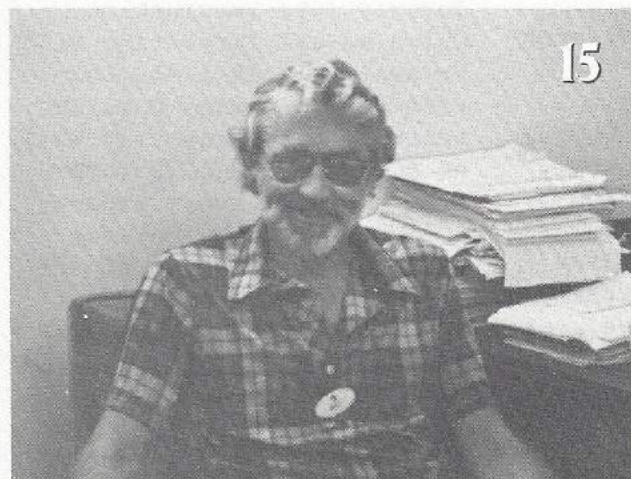
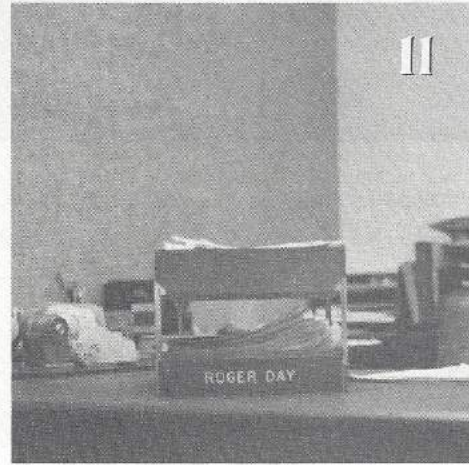
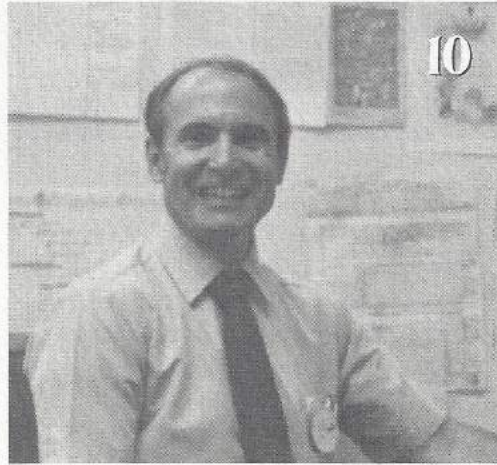
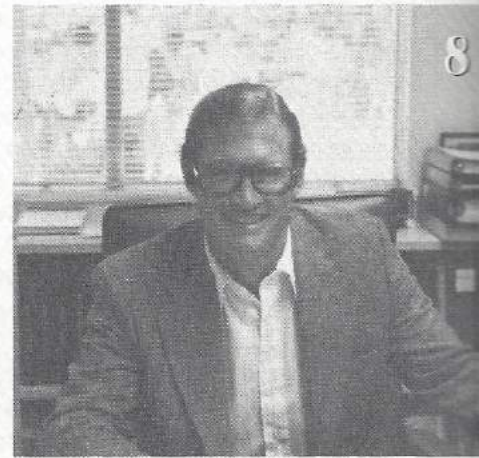
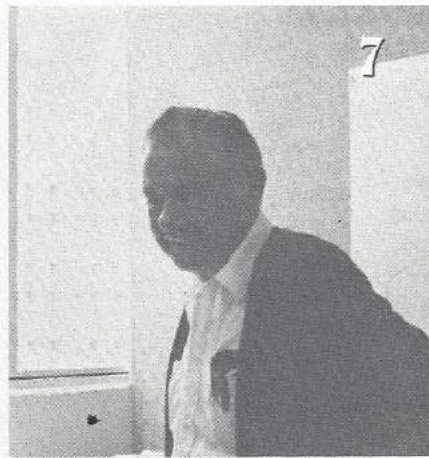
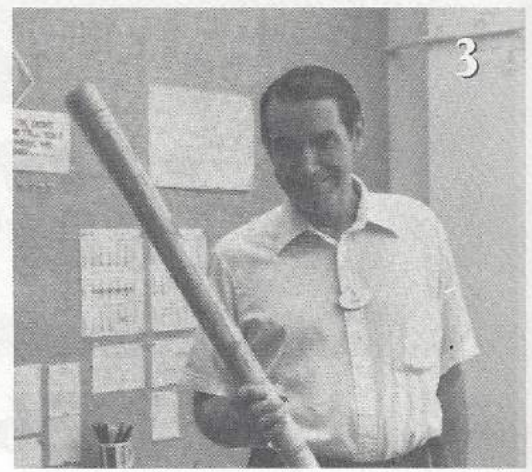
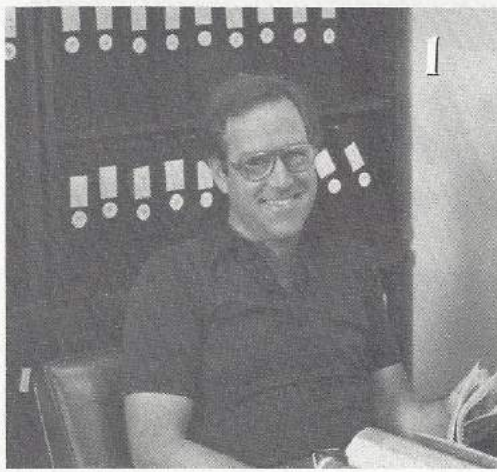
What will be in EPCOT opening day includes:

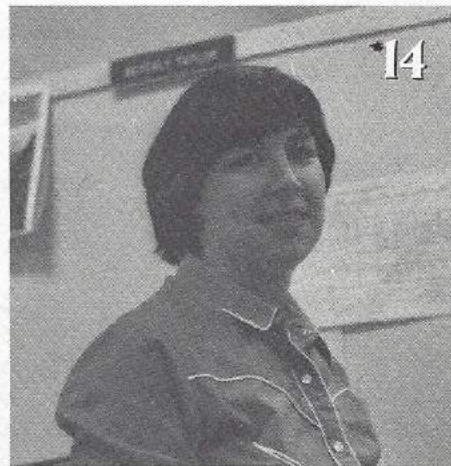
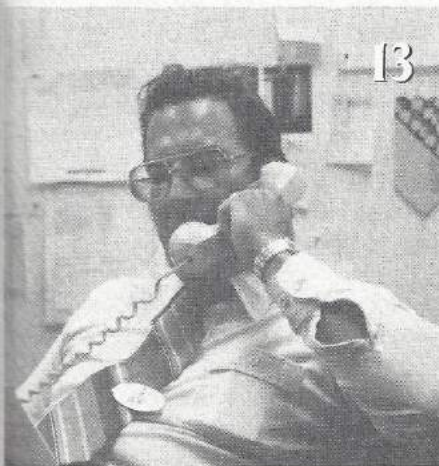
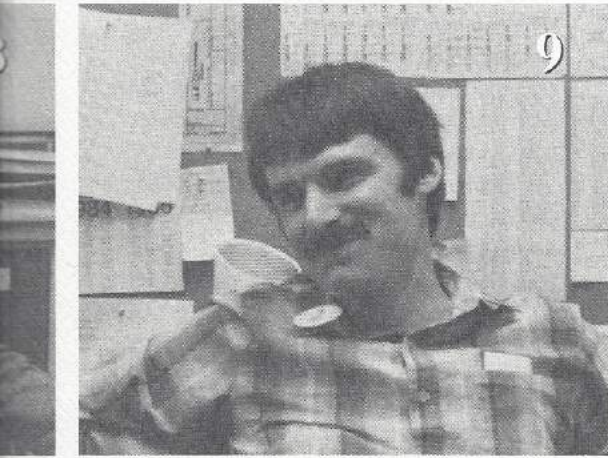
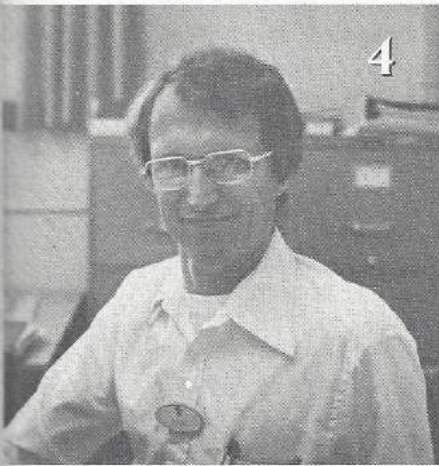
World of Motion, Energy, Spaceship Earth, Land, CommuniCore with EPCOT Central, two restaurants, the Exxon Information Center, Future Choice Theatre, Merchandise Area, A.T.&T. Exhibit, the Magic Eye Theatre, Image Works of the Journey into Imagination, Canada, United Kingdom, France, Japan, American Adventure, Italy,

Germany, the Promenade on Africa, the CircleVision portion of China, the Outdoor Cantina, the Exterior Pyramid, the Indoor Courtyard, & Scene I in Mexico.

The exceptions to the October 1, 1982 date are the show and ride of the Journey into Imagination, which we are forecasting will be available 12/1/82; the ride in the Mexico Pavilion, which we are forecasting will be available 12/1/82 (however, we have every expectation that if we continue to maintain the best of efforts, Mexico could be deliverable in total on 10/1/82); and the Merchandise in

(Continued on the back page)





EPCOT Project Managers

- 1** John Diefenbach Land
- 2** Jane Jackson American Adventure
- 3** Bob Mansfield Consultant to Jane Jackson and Jim Wolford
- 4** Don Hughes Site Development, Area Development, Support Investment, TelCom Satellites
- 5** Wally Tyler Office support for Doug, Roger, Bill, Gene, Jim W. and Ben
- 6** Doug Stapp Spaceship Earth, Main Entrance Complex, Horizons
- 7** Bill Stockman Site Development, EPCOT Utilities
- 8** Kym Murphy Sea
- 9** Jeff Burton China, Equatorial Africa, Italy, Area Restrooms
- 10** Ben Prewitt CommuniCore Facility
CommuniCore Restaurants, Sperry VIP Area, EPCOT Central Show
- 11** Roger Day Journey into Imagination
- 12** Shirley Zell Office support for Don, Jeff, Paul N. and Paul W.
- 13** Joe Navarro Canada, United Kingdom, West Restaurant Complex
- 14** Beverly Taylor Office support for John, Jane, Bob, Bruce and Joe
- 15** Bill Dennis World of Motion, Universe of Energy
- 16** Jim Wolford France, Japan
- 17** Bruce Dunford Germany, Mexico, East Restaurant Complex

Camera Shy

- Jerry Aldrich CommuniCore EPCOT Central
- Gene Mullinax Central Energy Plant, Central Energy Management System
- Paul Nylund Cast Center, Shops-Storage, CommuniCore Shows, Sperry Pre-Show
- Paul Weickert Monorail
- Gaye Simpson Executive Secretary to Jim Nagy



the China Pavilion, which will be there in the Spring of 1983.

The phase II pavilions are the show in Japan, which we expect October 1, 1983; Horizons, which we expect December 1, 1983; and as of yet, a delivery date for the Living Seas has not been set and is pending, awaiting results of Kym Murphy's marketing efforts.

So all of the things that we began with in approximately February of 1980, the majority of them will be there on opening day. And that is due to the good efforts of all of the people in all of the organizations connected with the Project.

Imaginews: What percentage complete on the Site would you say that we are?

Jim: On the global percentage we are probably 45 to 50% done right now. And the question would eventually arise, if we are only 50% done to date, how do we expect to get the other 50% done in a year? The answer to that is that the first 50% was very difficult due to learning curves and the start-up time involved. We are now into a very productive and gainful mode. I get more and more encouraged every time I see the Site. We are making tremendous strides.

Imaginews: Do you feel that we are going to make it?

Jim: Yes! I do not have a doubt!

Imaginews: What do you feel regarding the schedule that is facing everyone from now until opening?

Jim: It is going to be a very

very challenging schedule and everyone has to expend their best efforts, cooperation, and timeliness. With everyone doing this, we will achieve our goal.

Imaginews: There is a big concern among a lot of people that we may have to sacrifice quality in the time that we have left. Do you have any feeling or thoughts on this?

Jim: I have no indication that any quality will be sacrificed. In fact, we are making eleventh hour decisions regarding pavilions in order to improve the quality.

A case in point is that we are going to paint a ceiling in the Transportation Pavilion. The change was as recent as last Friday. The ceiling was not considered to be attractive enough, and as a result, painting it was the expeditious solution to improve it.

Imaginews: What are the objectives and priorities of Jim Nagy now that there are 365 days left to opening?

Jim: To survive!

Imaginews: And after opening?

Jim: To do the best job possible..and to survive!

Imaginews: How are you surviving? A lot of employees would like to know how you stay so calm and collected.

Jim: I really can't say. I just try to do the best job possible in the time allotted. And I like dealing with the people here. I think that everyone in all departments have done a super job and I am just happy to be associated with them.

Imaginews: All of us know that the Project Managers are a very difficult group to get a hold of these days. In fact, when the Imaginews went to take their pictures, we found vacant offices because many were in Florida. How do you feel about your Managers as a team?

Jim: I think that they are a terrific group of people. They are all working very hard and diligently. You commented on vacant offices, well, during the next year, those offices will probably be vacant more than they are occupied. And that is the way it should be.

We are in a construction mode now, and this group is responsible for the schedule and budget of their pavilion. It is up to them to make sure that they are up to the minute on the construction progress, and the only way they can do that is to be in Florida. So I am edified to see some of their offices vacant. They are a good group and they are doing a fine job.

Imaginews: Do you have anything you would like to say to all WED & MAPO employees?

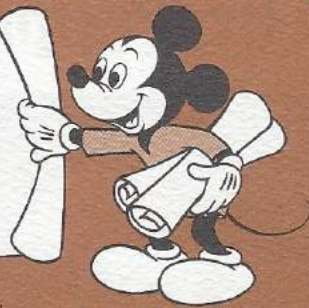
Jim: The only thing I would like to say is that everybody has done a tremendous job, but we can not rest on our laurels because the last year will probably be harder than the two preceding years. If we organize ourselves well and apply ourselves diligently, we could probably spend the summer drinking beer and taking life easy.

We have much to be proud of, keep it up!

WED & MAPO Imaginews
Vol.II No. 19
Editor: Valerie Warner
Assistant: Kathleen Nunez
Graphics: Fred Miwa & Staff
Disney University, ext. 4201

WED MAPO

Imaginews



December 24, 1981

Wed & Mapo Prepares For X-mas



Merry Christmas



The People Behind The Projects



On December 24, 1981 Pete Siebrands will retire after 11½ years of service to WED & MAPO.

Pete first came to WED & MAPO as a maintenance man in June of 1970, a year and four months away from the opening of Walt Disney World. "When I first came here "Mickey Mouse Revue" was set up next to the carpenter shop," remembers Pete. "And the maintenance shop was where it is now but it was chicken wire. I built all the cabinets and benches.

When I asked Pete about all of the changes he has seen (and made) at WED & MAPO, he just shook his head and told me, "It would take a day to show you all of the walls I have moved."

After he retires Pete and his wife are moving to Utah to be near Pete's daughter and Pete plans to keep busy by building grandfather clocks.....from scratch.

When I asked him about his retirement, he scratched his head and said with Mid-west candor, "I'm looking forward to it. But sometimes I get scared." And then with his eyes wide he said, "It's a little like getting married you know... I mean, I think about it."

All of Pete's friends at WED & MAPO wish him a happy retirement and a Merry Christmas.

Frank Stanek's Forum

*Tokyo Disneyland Site,
November 1981*

Participating in a continuing program to keep WED & MAPO Employees updated as to the status of our Projects, Frank Stanek, Vice President of Tokyo Disneyland Administration, hosted an Employee Forum in the EPCOT Presentation Area on November 24, 1981.

Site construction, maintaining show quality after opening, and the challenge of long distance communication were some of the topics that were discussed.

Using slides, Frank showed the construction progress of the site and explained that the park is being built in four quadrants. Each quadrant is organized and controlled by a different Japanese contractor, which is creating friendly competition and timely results.

Since so many employees were concerned with the control and maintenance of show quality after opening, Frank discussed the Oriental Land Company's Trainee Program



that has arranged for Japanese Management personnel to be extensively trained in three Disney locations, Disneyland, WED & MAPO, and Walt Disney World. Frank also discussed the Disney guidelines that have been created and published as reference material for the Oriental Land Company, as well as the possibility that after opening the Tokyo Disneyland Administration group at WED & MAPO could be organized to address Quality control and East/

West Disneyland relations.

With Frank spending three out of every four weeks in Japan, he was able to share first hand experience of what long distance communicating is like. With the mail taking as much as five days to get from California to Japan ("And that's when things go right!"), Frank stressed the importance of continued cooperation and support of WED & MAPO Employees relocated 6,000 miles away from us.

Did You Know?



© Walt Disney Productions

That this summer, the Mark IV Monorail System, and the WEDway People Mover each received a commendation for Design Achievement from the National Endowment for the Arts.

As of Monday, November 30, all of the sets for "SpaceShip Earth" were completed by the WED Tujunga crew.

The voice of Figment and Dreamfinder have been chosen. Actress Susan Grey is Figment and actor Chuck McCann is Dream Finder.

That with all of the 3-D film work being done for EPCOT that Disney is in the technological forefront of the 3-D film industry.

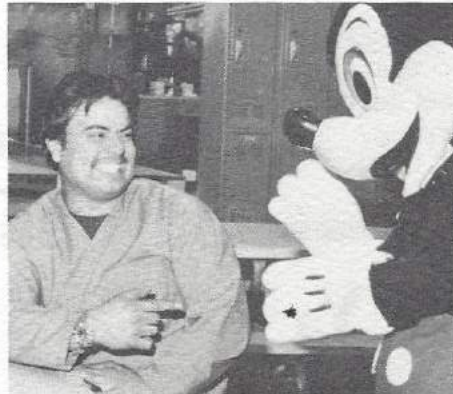
Standing 85' above grade, "Space Mountain" is one of the tallest buildings in Tokyo, which means when the 184' Castle is completed it will tower over Tokyo.

It is anticipated that the entire 1st year attendance of Tokyo Disneyland will be sold out.

Set Your Funny Bone On Laughter

If you are suffering from illness, ill humor, or stress, (by all means laugh) it has been discovered that laughter helps to promote a cure. The age old saying, "Laughter is the best medicine" ain't just smiling into its beer.

According to Patrick Mahony in his article, "Laughing Sickness Away", published in August 1978 by New Realities, "When we laugh our nervous system takes, as it were, a momentary holiday. Physiological changes occur as we move the diaphragm up and down vigorously, thus emptying the lungs. The psychological value of a good laugh is also excellent, because the nervous system receives a keen stimulation by the necessity for control and attention as it adjusts to the maintenance of body balance. It is an exercise free of stress and promotes a feeling of well being."



CHARITIES CO
RTAINMENT I



So go ahead, laugh. It might be the best thing you could do for yourself all day.

On the Move



Tom Wilder has been promoted to Supervisor of the Machine Shop at Airway Manufacturing.

Diane Romeo has been promoted to Office Supervisor for Mechanical Engineering.

Ev Pereya has been promoted to Manufacturing Methods Engineer.

Darlene Galati has been promoted to Production Coordinator Assistant.

Todd Gallager has been promoted to Special Effects Apprentice.

Debuts...



Front row (left to right) Reyna Chacon, Janitorial; Kathleen McKissick, Special Effects; Barbara Neft, Estimating; Pamela Ingram, Janitorial; Jacqueline Frazier, Accounting; Back row (left to right) Hiroshi Uyeda, Electrical Manufacturing; Andy Anderson, Technical Standards; Ralph Hollis, Janitorial; Rockne Hall, Special Effects; Kelly Milburn, Production Services; Donald Raymond, Electronic Engineering.



Front row (left to right) Jen Jen Tong, MIS; Gene Dibala, Merchandising; Tanya Parham-Wilcox, World Processing; Claire Altheuser, Administration; Back row (left to right) Rex Layton, Security; Joan Woolf, Professional Staffing; Rhonda Lambert, Special Services, Bob Beal, Special Effects.

Sayonara

Here's Cookin' At Ya



In recognition of exceptional service and excellence in food preparation and banquet service, Howard Able accepts a special award from Dean Sharits of the Disney University.

Everyone at WED & MAPO works hard, but few work harder than Howard Able and his staff. A special WED & MAPO thank you to the whole Gallery crew.

Pictured right to left are: Hilda Vernon, Dean Sharits, Howard Able, Aurelio Becerra, and Theresa Jackson.



Pictured is Sam Saotome, who is the last of the Oriental Land Company Trainees to take part in an extensive training program that also included lengthy stays at the two Parks.

While at WED & MAPO, Sam worked and trained in Department 510, Electronic Engineering, located at our 1048 Grand Central building.

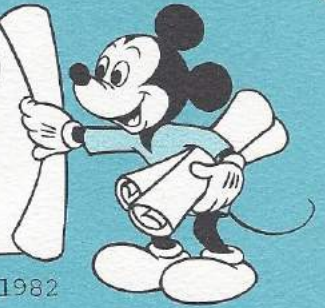
Sam has now returned to Japan where he will train co-workers as they prepare for the opening of Tokyo Disneyland in March of 1983.

WED & MAPO Imaginews, Vol. II, No. 24, Disney University ext. 7627. Editor: Valerie Warner, Assistant: Kathleen Nunez, Typist: Dianne Vogg, Graphics: Fred Miwa & Staff.

WED * MAPO

imagine news

January 29, 1982



Cable T.V. Channel, New Era For Disney

When Variety printed the news release information of the Disney channel the headline read, "DISNEY TIES FUTURE TO CABLE T.V."

If you attended the January 14th forum hosted by Jim Jimirro, President of Telecommunications at the Studio, you would have come away thinking that Variety must have attended the forum as well.

With enthusiasm, speed, and humor, Jim outlined the creative promise of Group W and Disney's joint venture into a 16 hour pay television channel.

Group W is to provide the technological experience and Disney the programming. For the programming the Disney channel will have three sources: 1) Our existing library, 2) Outside sources that are in keeping with Disney philosophy, 3) Original programming.

One important source of number three will be Epcot Center. Variety said of EPCOT's involvement, "...the dark horse resource - the one that could end up leading the parade - is the Epcot Center, "community of tomorrow", that's building near Orlando, Florida."

Jim echoed this feeling by saying, "The real impact of EPCOT will come from the things that were not visible when the project began."

And as an example he discussed the tremendous effect EPCOT will have on our educational media films by making available to schools the wide range of subject matter covered in the entire Project.

In fact, nine professional educators were brought to WED & MAPO to view EPCOT and to make recommendations as



Jim Jimirro speaking at Forum

to what subjects should be best used for programming.

These nine educators are forming what will be known as the EPCOT Educational Advisory Board. A group that will further Walt Disney's objective of blending education with entertainment.

Jim was confident that the experience we already have will be a foundation on

which to build solid and innovative programs: "Because of our involvement in educational media films for schools, we know how to use programming to make an impact. Television is a passive medium. We want to create an active television service that will also make an impact."

And moving out of the educational possibilities and into all of the options that await our original programming efforts, Jim spoke of animation, afternoon serials, and other innovative possibilities it is up to our imaginations to create. And to do all of this Jim stressed that: "The essential creative thrust has to emanate from within. You cannot be Disney unless you know the philosophy."

Jim acknowledged the creativity of all of us here at WED & MAPO and spoke of the need for our continued creative support.

(Editor's note: Jim also mentioned in the forum that he is looking for an inventory of talent. If you are interested, you are encouraged to fill out a Personnel Inventory Form. These forms are available through the Employee Assistance Center in Sonora, or through your Employee Development Representative.)



FUTURE WORLD

"World of Motion"

The final scene buy-off in animation programming occurred January 14. The center core towers are near completion at the Studio, and will be installed in mid-February. Vehicle production continues on schedule. First floor facility construction has been turned over to General Motors.

"Land"

The buildings are entirely enclosed. The sculpture is finished for the fountain in Farmers Market and installation of the glass has begun. The Kitchen Kabaret is being sent to Florida and will be installed in February. Tree work is starting in the Biome area and mural installation has begun as well.

"Universe of Energy"

Turntable installation is due to begin the week of January 25. The first of the large energy doors began operation the week of January 18. Framing for photographic cells is underway. Vehicle assembly is continuing.

"SpaceShip Earth"

Construction on the closure panels is continuing. Show set installation is continuing. Ride turntable installation is complete. Floor slab for Earth Station began. Ride track installation will be complete early in February. Main entrance complex is on schedule.

"Communicore Facility"

The cable terminal cabinet room is complete. Nine cabinets are installed. Main computer room is complete.

"Journey Into Imagination"

The ride track installation for scene 4 has begun. Structural steel will be complete by February 1. (which includes last of "Magic Eye Theater"). The exterior lathe and plastic is well under way on the southwest and north walls of the building. Revolving theater installation will begin January 25. Slab pours are continuing on the track bed as well as on the second floor Image Works. Roof decking has begun in the main building. Animation manufacturing is under way for scenes 6 & 4. Programming will begin February 22, and commence with scene 6. The 1A Dream Vehicle is near completion and the 4 duplicate machines are well under way. Completion is expected March

WE ARE DOING IT!

8. The test track (under red & white circus in the WED parking lot) is running 24 hours a day to prove ride engineering concepts before final ride components begin. The 1st article ride vehicle will begin construction by February 1. The set piece for scene 6 is complete and the set piece for scene 4 will be complete by January 29th.

"Horizons"

The bid was awarded to Palmer Smith, Inc., of Detroit, Michigan. Ground breaking occurred January 6. Work has commenced.

"Seas"

Show design and special effects development are proceeding for the "Poseidon" Theatre. All facility drawings are completed and surcharging on the EPCOT site for the 5½ million gallon "Sea Pavilion" tank is proceeding.

"Central Energy Plant"

Chilled water system, low temperature water system, domestic water system and air systems are expected to be complete by March 1. Initial testing of the plant is due to begin February 1.

Site and Area Development

The Site development contract was completed mid-December 1981. World Showcase area development is progressing along with the individual contracts. Specimen trees are being planted as they become available. Irrigation and electrical underground of Future World area development is in progress.

WORLD SHOWCASE

"American Adventure"

Carriage 2 (small carriage) installation began in January, and carriage 1 installation is scheduled for early February. F.R.P. (fiber reinforced plastic) installation is ready to begin on the back and metal working is continuing. Masonry is up to the third floor.

"Mexico"

The main structural steel system for the building is complete. The roof decking is complete. Structural steel framing for the interior shops is 80% complete. Work on the ride containment wall at the end of the plaza is 60% complete. The load/unload area is 80% complete. The Front Pyramid foundations have been poured.

"Canada"

The CircleVision Theatre is up and the interior, as well as the exterior, finishing is continuing. The Hotel is being prepared for F.R.P. and rock work is continuing.

"France"

The Signature Perfume building is enclosed and duct work installation is in progress. Interior rough-in will begin in February. The Wine Shop building is enclosed and F.R.P. is in progress and on schedule. The Bistro building will be enclosed by the end of January and roofing is in progress. Duct work installation on the show building is in progress. The theatre slab will be poured and the building will be enclosed by the end of January. The theatre curtain structural steel will begin mid-February. Film production is complete and on schedule.

"China"

Foundation work has begun on the south and the east sides. Steel is arriving to begin steel erection for the Rotunda and CircleVision. Phase II filming has begun in China.

"Italy"

Steel erection is complete. The Campanile has been topped out with F.R.P. and is ready for cement plastic facades. The enclosures for buildings 1, 2, and 6 have begun.

"Japan"

The Katsura Garden contract has been awarded to Rock and Water Scope Systems. Effort is to begin February 15. The Department store restaurant slabs and the roof ducking are in progress. Structural steel is complete. Structural steel on the Pagoda is 85% complete and F.R.P. installation will begin February 1.

"United Kingdom"

F.R.P. is well under way. Most buildings are ready for the final roofing material and the sea wall is receiving character finishes.

"Germany"

Wood framing on the north portion of the courtyard and character theming are in progress. The Beer Garden roof support system is complete. Excavation and preparations for slab fill are under way. The trees are planted in the area in front.

Debuts . . .



Front row (left to right) Richard Sanford, Audio/Video; Alta McGovern, Security; Jacques Charvet, Show Design; Nick Schepperle, Special Services; Paul Sonski, Show Set Design.
Back row (left to right) Deborah Richards, Library; Sharon Wolf, Telephone Services; Gary Ganibi, Security; Victor Henkers, Project Accounting; Lawrence Gertz, Audio/Video; Matthew Robins, Research & Development; John Hoyt, Warehouse; Wallace Clark, Library.



Front row (left to right) Aric Adolph, Coordination; Ellis Katz, Land Use Planning; Mick Vestal, Lighting/Special Effects; Lauren Stara, Graphics; Lisa Rodriguez, Industrial Engineering; Sabrina Aguilar, Electronic Engineering; Maggie Lewski, Electronic Engineering; Bill Brusseau, Lighting/Special Effects; Back row (left to right) Emmanuel Labrionos, Electronic Engineering; John Edwards, Lighting/Special Effects; Mike Gengler, Land Use Planning; Joe Benjamin and Jeff Reed, Lighting/Special Effects; Mike White, Electronic Engineering; Jim Schumpert, Landscape Design.

On The Move

Joann McEwen has been promoted to Executive Secretary.

Charlie Moss has been promoted to Traffic Analyst Assistant.

Kathleen Nunez has been promoted to Employee Communications Coordinator.

Jeffrey White has been promoted to Show Production Artisan III.

Dusty Wood has been promoted to Performance Assurance Analyst Assistant.

For Your Benefit

CREDIT UNION AT AIRWAY

Beginning February 10, The VISTA UNITED CREDIT UNION will have a representative at the AirWay building the second Wednesday of each month. Office hours will be from 11:30 to 12:30 in the break room.

EPCOT LICENSE PLATES

If you have purchased an EPCOT License plate, please be aware that in California it is against the law to substitute either one of your assigned California plates with a decorative plate. It has been reported that several employees have been stopped by the C.H.P. and in one case a ticket was issued.

Enjoy your license plate in your car window or in your home or office and know that the C.H.P. may enjoy giving you a ticket if you display it on the front of your car.

MMAC News

MANN THEATRE TICKETS

Mann Theatres discount tickets, valid through June 29, 1982 are now available at the MMAC desk. They sell for \$2.50 and are quite a savings from the normal price of \$4 or \$5. They cannot, however, be used for special showings or at Westwood theatres.

VAN POOL

Anyone who lives in the Irvine or Anaheim areas and is interested in joining a van pool to work, please contact Janet Buhl at the Disney University on WED ext. 2455.

WED & MAPO Imaginews. Vol. III, No. 2, Disney University ext. 7627. Editor: Valerie Warner, Assistant: Kathleen Nunez, Typist: Presela Robley, Graphics: Mimi Sheean-Cervantes.

WED MAPO

Imagineers



AUGUST 27, 1982

July 29 Forum Questions and Answers

Carl Bongirno, President of WED & MAPO, and all the Divisional Vice Presidents, hosted six sessions of the Resources Plan and Project Update forum for all WED & MAPO employees on July 29, 1982.

On hand at the forums to present current slides updating the progress of our three major projects were Dave Melanson, Project Manager for New Fantasyland, Frank Stanek, Vice President of Tokyo Disneyland Administration, and Jim Nagy, Project Director for EPCOT Center. After their presentations, Carl reviewed an update of the Resources Plan that was presented to all WED & MAPO employees last February.

A highlight of the 2:00 presentation came when Carl presented Marty Sklar, Vice President of Creative Development, with a service award commemorating Marty's twenty-five years of service with our company. Marty told the gathering that in all of his twenty-five years, the most satisfaction he has received has been



Looking across from Italy in World Showcase



Aerial view of EPCOT Center taken the end of July

from watching the way everyone has responded to our projects. Especially gratifying for him is the way old talent has blended with the new to create a growth of experience for everyone.

Following each presentation, Carl opened the floor for questions and answers.

Here is a sampling of the questions most often asked at the conclusion of each session.

Questions/Answers

Q: Why are we sending things to be built to outside vendors, including Walt Disney World shops when we could do the work here at WED & MAPO?

A: The only reason that we are sending work to outside vendors and Walt Disney World shops is to meet our opening day schedules.

Con't on next page

Q&A con't

Q: How many people have been laid off since the last Resources Plan Update in February?

A: Since the February Update, the number of WED & MAPO employees has been reduced by 60 people. Of that 60, as of June 9th, only 13 were actually laid off. The rest left through the natural process of attrition (people retiring or leaving for another position). Of the 13 individuals laid off, 7 have been placed, with the help of out-placement, in as good or better positions. The rest are still interviewing.

Q: Will there be a new WED facility built on the bowling alley property?

A: There is no commitment to build an additional building at this time as future needs for additional facilities have not yet been determined. However, we are continuing to develop our facility resource requirements as need becomes more clear.

Q: Will the 1984 Olympics have any effect on the attendance levels at Disneyland?

A: There will be a great number of people who will be in the Los Angeles area at the time of the 1984 Olympics. Many of these people have never been to Disneyland or they have visited in the past and would enjoy a return visit. Attendance is expected to increase at Disneyland during the summer Olympics.

Q: Are there any plans in the works for transportation projects similar to the WEDway People Mover in Houston?

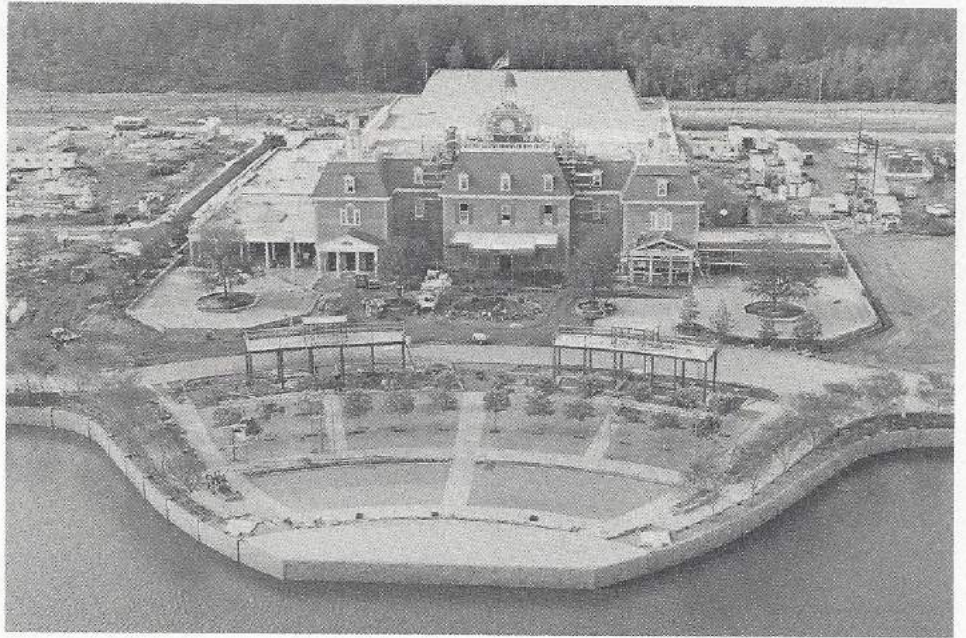
A: We are actively pursuing a company we can jointly participate with in a licensing arrangement of our technology. We are not really looking to go into the transportation business although we will keep abreast of the transportation industry by looking at selective projects that we might do, like the WEDway People Mover in Houston.

Q: Will we ever get involved with ski resorts?

A: Possibly - we may get into some year-round ski resort mountain recreational activity. There is substantial interest.

Q: What are the plans for the future of the Golden Oak Ranch?

A: The Golden Oak Ranch located near Valencia, consists of about 700 acres. It is used at the moment for television and movie filming. We are looking into the possibility of expanding the outdoor filming there and maybe building some sound stages. There is also the possibility of recreational activities in the future, but a lot depends if the current zoning restrictions change.



American Adventure's exterior is progressing well with fiber reinforced plastic work well underway on the main facility and amphitheatre. Inside the show area, seats, carpeting and curtains are in place as is the huge rear projection screen... the world's largest. On-site programming for the show is scheduled for the latter part of July.

Q: Who do you talk to if you have an idea you would like to communicate to someone?

A: You can submit the idea to the Better Way Program, where a representative from each division reviews the ideas and makes sure that they get to the right person for evaluation or you can go to whom you feel would be the right person to receive that idea. For example, if you have a creative idea, talk to Marty Sklar or someone in the design group. If it's an engineering idea, talk to someone in engineering.

Q: Have there been any requests for tickets to EPCOT Center yet?

A: Approximately three million tickets are sold already to people who want to visit EPCOT Center.

Q: What are the projections for the number of guests who will visit EPCOT Center during its first year of operation?

A: Some 8 million guests are expected in the first year. However, there is a great potential to exceed that figure.

Q: What kind of media blitz is being planned for the Opening Day of EPCOT Center?

A: Hundreds of television stations, radio programs, newspapers and magazine publications have or will be covering EPCOT Center before we open the first of October. All three morning national television news programs, NBC, ABC and CBS, will broadcast on-site live from EPCOT Center on Opening Day. The Today Show alone has asked for 60 hotel rooms for their people who will be tele-

vising from EPCOT Center starting the day before October 1, through the following week. Plans are also being made to broadcast live to WED & MAPO employees all of the Opening Day ceremonies of EPCOT Center and the dedication ceremonies which will be held throughout the month of October. On Opening Day, there will be very few people in the United States who will not have heard something about EPCOT Center, and by the end of October, few people in the entire world will not have heard of EPCOT. (Watch the Imaginews for further details of how EPCOT Center will be marketed for Opening Day and for the month of October.)

Q: Will President Reagan attend the opening of EPCOT Center on October 1?

A: It is on the President's calendar - whether he'll be there or not - no one can say for sure.

Q: If one is thinking of moving to Florida in the near future, is there a way to find out about job openings at Walt Disney World in Florida?

A: At the Employee Assistance Center in the Sonora building, there is a complete listing of open job requisitions throughout the company.

(Editor's note: If anyone has any further questions they would like to ask regarding our past, present or future projects, The Resources Plan, or anything else of concern, please send them to the Imaginews. We will publish questions and answers of general interest to all employees in future issues of the Imaginews.)

Calendar of Events

EPCOT Center Souvenir

EPCOT CENTER SPECIAL EDITION COMMEMORATIVE TICKETS are on sale in the Mickey Mouse Activity Center at WED & MAPO. These first series "keepsake" tickets are part of a limited edition and are sure to be a real collectible item.

The tickets come in a sleek, silver embossed envelope accompanied by a colorful EPCOT Center brochure. The tear off stub is an admission ticket good anytime on or after October 1, 1982, entitling its holder to three days of unlimited admission to EPCOT Center and the Magic Kingdom, unlimited use of transportation within the Walt Disney World Vacation Kingdom, and unlimited use of all EPCOT Center and Magic Kingdom attractions (except Shootin' Gallery, Discovery Island, and River Country).

The tickets are priced at just \$24.00 for adults (regularly \$30.00), \$19.25 for juniors (regularly \$24.00), and \$14.50 for children (regularly \$18.00).

Disney collectors won't want to miss this opportunity to preserve the hoopla and excitement of EPCOT Center's grand opening with this beautiful commemorative souvenir.

Walt Disney Stamp Club

The Walt Disney Stamp Club will be holding a meeting on Wednesday, September 1. All members and their guests are invited to bring in their stamp collections for review and in order to determine their particular interests. Afterwards a stamp auction will be held in combination with the Lockheed Stamp Club.

On-hand will be a finished sample of the Walt Disney envelope which will commemorate the opening of EPCOT Center.

The third session of the Drawing on the Right Side of the Brain classes will begin this September. Watch the Imaginews for further details.

Computer Graphics Seminar

On Tuesday, August 31st and Wednesday, September 1st in the EPCOT Presentation Area, we will be having a slide presentation of the Siggraph '82 Conference on Computer Graphics. Rose Lynn Fischer, who attended the conference in Boston, will be discussing the state of the art presentations given at the conference. We will be meeting between 12:00 noon and 1:00 p.m.

Please feel free to bring your lunch. If you have any questions, please contact Peggy or Lida at 7741 or 7756.

EPCOT Center Merchandise for Sale

Hurry on over to the Mickey Mouse Activity Center. There's still some EPCOT merchandise for sale. Available are the following items:

- EPCOT license plates ... \$1.00
- EPCOT license plate frames ... \$1.00
- Spaceship Earth posters ... \$.50
- EPCOT Window Decals ... \$.75
- EPCOT Bumper Stickers ... \$.50
- EPCOT Small Foil Stickers ... \$.25
- EPCOT T-shirts in royal blue with the Spaceship Earth logo ... \$4.00 (available in the adult sizes of extra large, large, medium and small)

Auto Repair

Auto Maintenance: (Service Garage, Ext. 5533) Full mechanical auto repair is available to all Disney employees by appointment at the Studio Service Garage. Hours are Monday through Friday, 8:00 a.m. to 5:00 p.m. (Service Station, Ext. 5200) Complete auto maintenance which includes gas, oil, lubes, shocks, tires, battery and many other services, are available to all Disney employees daily from 7:30 a.m. to 6:00 p.m.

"Journey Into Imagination"

You are all invited to an employee forum on "Journey Into Imagination" this Tuesday, August 31 from 5:00 to 7:00 p.m. in the EPCOT Presentation Area. Tony Baxter and Barry Braverman from Creative Development will host the forum which will include slides and videotapes.

Disney College Scholarships

Application forms and additional information about the Disney College Scholarships are available in the Disney University. The deadline for filing an application is October 1. All qualified students whose parents are regular, full-time (permanent, 20 hours or more per week) employees are eligible to participate.

Theater Tickets

Hey, all you movie-goers! Mann theatre tickets are available at the Activities Center for just \$2.50 a piece. These tickets can be used at any Mann theatre in the Los Angeles area except the Mann theatres in Westwood which often books special engagements. So, come in and get yours today!

WDW Tencennial Books

The Walt Disney World - The First Decade books are available at the MMAC at WED & MAPO and at the Studio. These beautifully illustrated hard-cover books are yours for only \$6.00. Hurry and get yours, for supplies are limited!

WED & MAPO IMAGINEWS
Vol. III, No. 16

Disney University, ext. 7627

Executive Editor: Valerie Warner

Managing Editor: Val Philbrick

Graphics & Typography: Cheryl Galvao
Contributors: Bob Bright, Kathy Nunez

From the 1048 Building...



Photo by Bob Bright

Greetings to all WED & MAPO employees from Art Frohwerk and the "gang" at the 1048 building. The departments represented are Electronic Engineering, Document Control, MAPO Electronic Development Lab, the CADD Center, Technical Publications and Accounting.

United We Give



Photo by Kathy Nunez

The 1982 - 1983 United Way Division Coordinators from left to right: Clarice Wynecoop, Employee Relations; Lori Mecham, Creative Development; Barbara Krystich, Materials; Michel Johnson, Administration; Gary Smestad, MAPO Manufacturing; Phyllis Hennessey, Show & Ride Engineering; Leanna Rooke, WED Production; Jim Romero, Tujungsa; Mo Nguyen, Land Use Planning/TDL. Not Pictured are Donna Greenlee, EPCOT Center Project Management & Support; Kit Gordon, Facilities Engineering and Grace Barnes, Architectural Design Engineering.

PEOPLE
LIKE YOU...
HELPING
PEOPLE
LIKE YOU!



The United Way Campaign

A fundraising campaign in business and industry
with major health organization Partners,
more than 250 United Way Agencies and the
American Red Cross

Please lend a helping hand when your
United Way Division Coordinator comes
by and sign your United way pledge card.

Please donate ... the United Way.

"Thanks to you it works for all of us."

RISING IN THE EAST



November 5 1982

Tokyo Disneyland Anticipates Spring Opening

by Larry Oppen

Tokyo Disneyland is rapidly heading toward a Spring Opening, according to Steve Noceti of Tokyo Disneyland Administration. "We're six months away from our projected opening" he said, "and although we generalize by saying it will happen in the spring of 1983, we're working toward a March 15th date".

When Tokyo Disneyland opens, it will be complete, and although there are plans for future development, when the theme park opens, everything on the site plan will be up and functional. There will be 31 attractions, 25 food facilities and 35 merchandising stores there, leaving very little unfinished space in the initial phase.

"We're looking good in terms of progress to schedule", Steve said. "A lot of the figures are installed, including the Indians on the River of America and the Country Bear Jamboree characters. We're catching up with all the required props and dressings here at WED & MAPO and have sent our experts to Japan to guide them in application. Art

directors are also in the field making decisions on colors, figure locations and graphics."

As far as facility completion is concerned, Steve reports that work is very close to being complete on all major facilities throughout the park. On facility construction and exterior finishing, those which are still in an unfinished state are the smaller ones like Cinderella's Golden Carousel, Dumbo the Flying Elephant and the Adventureland Shops complex.

World Bazaar is still scaffolded and in construction, but work is being completed on the final leg of exterior finishes. Within the next month or two, Steve expects the scaffolding to come down from this complex.

The scaffolds are also coming down from Cinderella Castle, a full size structure modeled after the one at Walt Disney World. The topping of the castle, which occurred last September 10, 1982, received extensive coverage in the Japanese media.



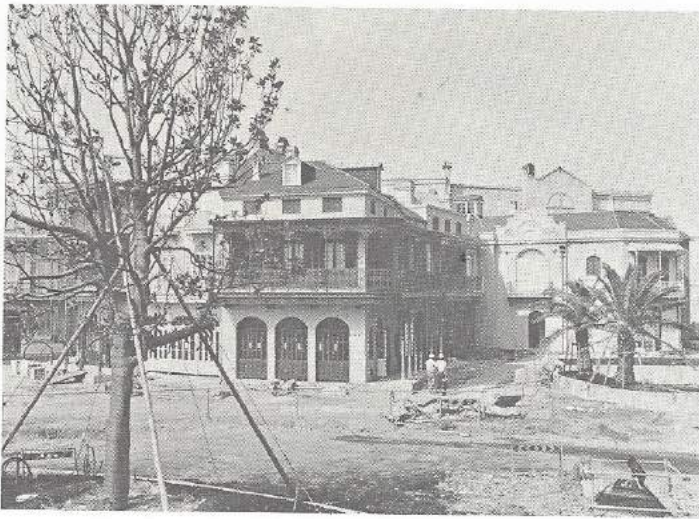
Steve Noceti

The Mickey Mouse Review/Pinocchio complex is almost complete as is the Star-Jets ride. On the Star-Jets, the elevator is up and the center rocket, with "USA" painted on it, has been erected.

The exterior of the Haunted Mansion is complete and work is progressing on the interior. "This attraction should prove to be an exotic experience to the

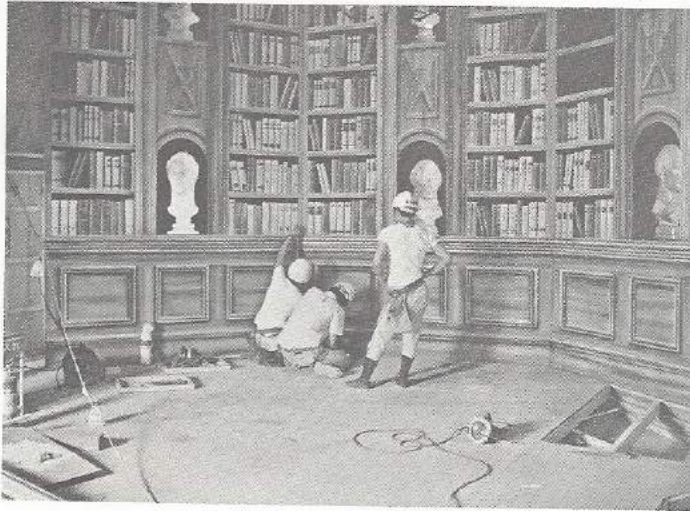


Aerial view of Tokyo Disneyland taken the middle of October



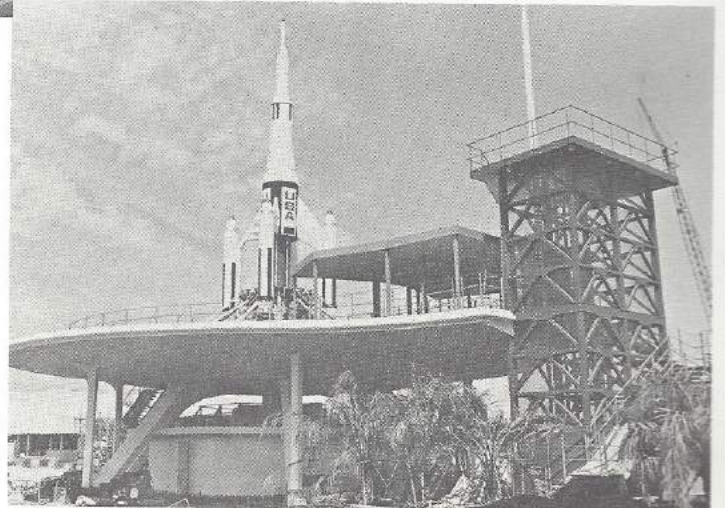
New Orleans-style architecture in the "Pirates of the Caribbean" complex

The Haunted Mansion



Japanese workmen put the finishing touches on the interior of the Haunted Mansion

The Star Jets in Tomorrowland



Meet Our Tokyo D/L Project Coordinators

One of the busiest groups currently involved in Tokyo Disneyland installation is the Project Installation Coordination Office. This team is comprised of Cast Members from Disneyland, Walt Disney World, and WED & MAPO. Tokyo Disneyland Project Coordination started in 1980 with three coordinators. It has since been expanded to a staff of eleven - due to the heavy workload.

Each Project Coordinator is responsible for specific areas of Tokyo Disneyland, which are classified as facilities (the buildings). A facility may include a "show" (animated figures and associated equipment) and "ride" (vehicles, track, and ride systems), and also food service and merchandise sections. A Project Coordinator's responsibilities involve the interaction with all appropriate personnel, including Disney employees, outside contractors, vendors, and the Oriental Land Company. Installation schedules regarding equipment delivery, material shipment, work sequence, and production deadlines are reviewed constantly by the Project Coordinators.

Managing Director, Wayne Jackson calls the department, "...the heart of a themed attraction or facility. All other parties must work through Coordination to ensure smooth progress from start to finish."

Vance Ablott, Manager of the Coordination team, stresses that Coordinators are involved with a facility, beginning with its initial design phase. Subsequently, the Coordinator follows the facility's progress through manufacturing, show programming (if required), shipment and installation. The Coordinator's job is not finished until the facility receives the final "buy off" or approval. Only then does "turn key" occur, as Coordination turns the facility over to the Operations people.

Coordinators are not required to be knowledgeable in all technical areas, but must understand the various efforts required to assemble and install a complete facility. This understanding comes from each Coordinator's personal experience in Disney operations at Disneyland or Walt Disney World.

Vance Ablott of WED & MAPO first joined Disneyland in 1969 as a Custodial Host and subsequently became a Supervisor. Vance transferred to WED & MAPO in 1980 as a Tokyo Disneyland Project Coordinator. Today, he manages the Project Coordination group. In addition, Vance shares coordination duties on

"It's a Small World" and "Meet the World".

A Disneyland Attractions Host since 1969, Paul Lewanski of WED & MAPO joined the Tokyo Disneyland project early in 1980. He was an Intern and later became a T.S.A. (Temporary Summer Assignment) at the Tokyo Planning Center. That same year, Paul moved to WED & MAPO Coordination, assuming responsibility for such themed attractions as "Mickey Mouse Revue" and "Rivers of America". Project Coordinator Paul Lewanski sees his job as that of "ombudsman or troubleshooter".

Craig Russell of WED & MAPO hired on as a Document Coordinator in 1980, after graduating from U.C.L.A. with a major in mechanical engineering. The next year, Craig joined the Project Coordination team. "Space Mountain" and "Jungle Cruise" are among his responsibilities.

Although new to Tokyo Disneyland, Les Skoloda of WED & MAPO is an experienced Coordinator. After seven years at Walt Disney World, he recently completed a three-year position as Project Coordinator on "World of Motion" at EPCOT Center. Two of the themed attractions which are Les' responsibility, "Snow White's Adventures" and "Country Bear Jamboree", are currently in the programming phase.

Art Heisler of WED & MAPO, also comes to the Tokyo Disneyland coordination staff from Florida. Art started with the Walt Disney World Interiors Department in 1978, and then moved to the EPCOT Center project as Coordinator of merchandise facilities in 1979. In July of this year, Art relocated to Tokyo with responsibility for Tokyo Disneyland merchandise facilities.

Since 1969, Chalmer Day of Disneyland has been an Attractions Host. Chalmer has been Lead and Trainer throughout Fantasyland, including over six years on "It's a Small World". He also trained Oriental Land Company trainees for three years. Currently, Chalmer is coordinating the "It's a Small World" installation at Tokyo Disneyland.

A Disneyland Attractions Host since 1972, Rocky Thompson of Disneyland relocated to Tokyo in June of this year. Rocky's previous work experience as Lead and Trainer throughout Disneyland included Parking Lot and "Jungle Cruise" experience which helps him in his current duties. As a Project Coordinator, Rocky shares responsibilities for "The Jungle Cruise" and "The Enchanted Tiki Room".

Don Brown has worked at Disneyland since 1968 in Attractions. Don has been Lead and Trainer throughout Disneyland on such attractions as "It's a Small World" and "Pirates of the Caribbean". Earlier this year, Don joined the Tokyo Disneyland Coordination staff and now shares responsibility for "Pirates of the Caribbean".

Mike Gingras became a Disneyland Attractions Host in 1969. Mike has worked throughout Disneyland as an Attractions Host, Lead and Trainer. Mike was Lead on "Space Mountain" for the past three years. He now shares the coordination duties on Tokyo Disneyland's "Space Mountain".

Food facility coordinator Ferril Onyett was hired at Disneyland in 1974 in Outdoor Vending. Later, Ferril moved to the Tomorrowland Areas where she became a Supervisor in Foods. Ferril's present Tokyo Disneyland responsibilities include the coordination of all food facilities.

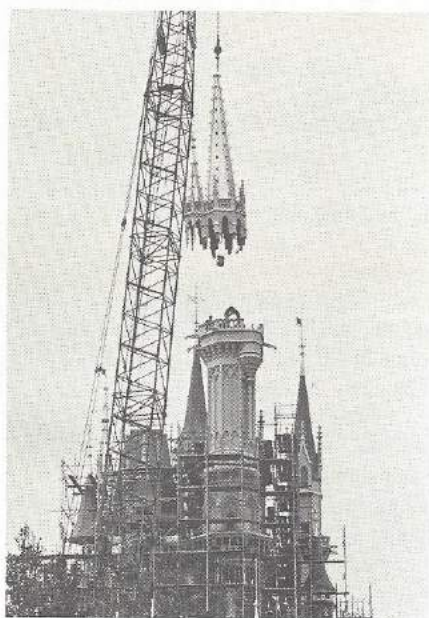
The eleventh Tokyo Disneyland Project Coordinator is Kirk Winterroth of WED & MAPO. Kirk will soon relocate to Tokyo to continue coordinating the installation of "Meet the World" at Tokyo Disneyland.

Opening...

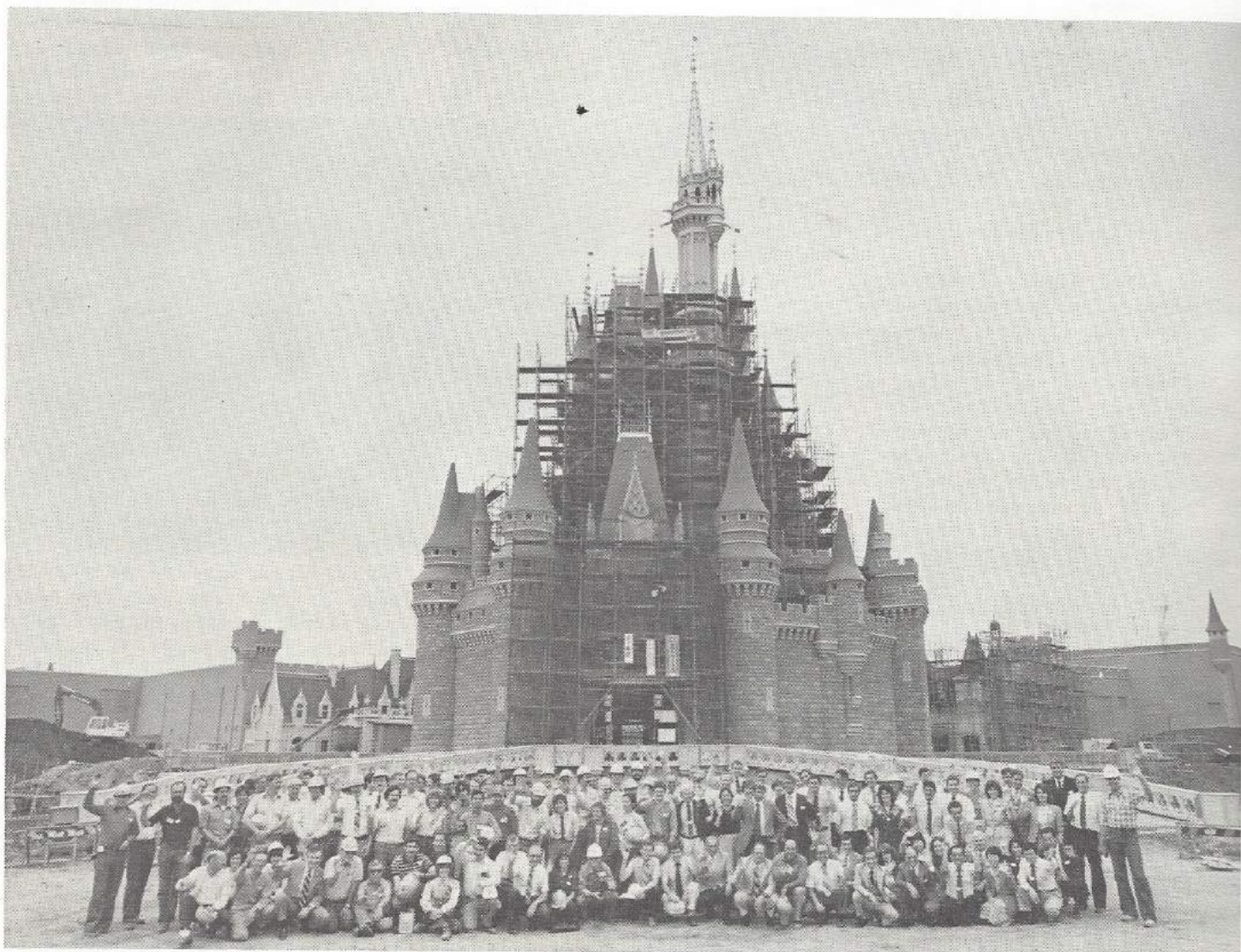
Japanese guest", Steve said. "Their concepts of ghosts and spirits are completely different from ours. I don't think they are accustomed to experiencing ghosts in a humorous vein".

Most efforts are currently being directed towards interiors - finishing of the show areas and installing the figures. The show productions still being created on this side of the ocean include the filming of "The Eternal Sea", a five-screen semi-circle vision show that will be ready for Opening Day. Work is also underway on the animation for "Meet the World." All the figures for this show are being completed and some have been programmed. According to Steve, programming is being bought off regularly, and a team will be leaving here shortly to guide the show installation in Tokyo.

Steve reflects for a moment and says, "Walt Disney merchandise and films have been tremendously popular in Japan for years. When the Oriental Land Company, our partner in this venture, adopted a guiding principle that emphasized family entertainment, it didn't take their officials long to determine that their interests and those of Walt Disney Productions coincided. The result of this coming together is the creation of Tokyo Disneyland".



Cinderella Castle received its crown in a long-anticipated Castle-topping ceremony held September 10. Spectators gathered to witness the royal capping as the 12-meter high spire was lifted to join the other gold-crested towers soaring into the Tokyo sky.



The Tokyo Disneyland staff sends you a hello from across the ocean as they gather in front of the recently "topped" Cinderella Castle.

We Get Letters

Dear Walt Disney World:

It sure is depressing to be home again. How does one and his family recover from one of the greatest times of their lives? I'm the man who for sixteen years of his married life never took his wife and family on a vacation (except to visit relatives). I was always too busy and always had more important things to do than waste my time and money running all over the country. Well, for reasons I still don't fully understand, I announced to my family that we were going to Disneyland for a vacation. I called and miraculously, with just three weeks notice got reservations at the Polynesian Village. Well, we came and I don't think I'll ever be the same.

To say I was impressed would be an understatement. From the moment we arrived at the Polynesian Village with the wonderful man who carried our luggage, to the very friendly waitresses and all the other countless employees who made our stay so relaxing. To the monorail people I met and chatted with (thanks for the ride up front). To all the people at the rides and exhibits who were so nice. To the atmosphere of truly a magical place. For all of you who enabled myself and my family to share three wonderful days in paradise, may I say THANK YOU!

I've been home now for almost three weeks, but I wanted to wait and write you after I had time to look back and reflect on our trip. Well, physically, I'm home but I'm afraid mentally I'm still at Disneyland. I guess for a few days I was a little boy again. My family and I laughed and played together and for a few days we forgot all about the outside world. As a 36-year-old little boy, may I say, you've stolen my heart Walt Disney World and if God be willing and the creek don't rise, we will be back next year and next year, and next year and ...

Very Sincerely,

Robert Hayes & family

P.S. We've already made reservations, see you next August.

On The Move

Bill Novey and Marc Fuller of Special Effects & Lighting, have both been promoted to Special Effects Design Assistant Managers. Bill's responsibilities include mock-up support, optics research and development and production, and special effects design. Mark is responsible for engineering liaison, laboratory services and research and development, and special effects design.

Reporting to Bill Novey and Marc Fuller, Alan Robinson of Special Effects & Lighting has been promoted to Supervisor of Design.

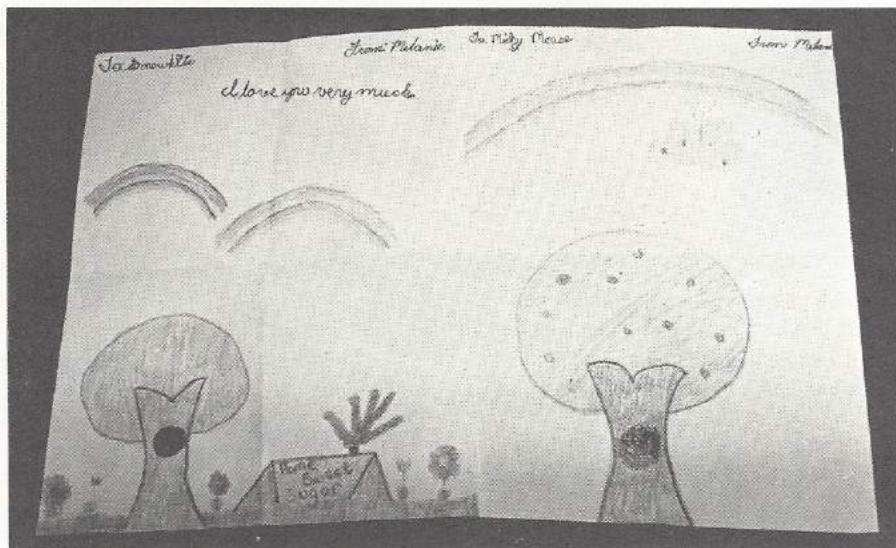
Reporting to Bill Novey, Craig Newswanger of Special Effects & Lighting has been promoted to Supervisor, Optics R & D and Production.

Also reporting to Bill Novey, Bill Barber of Special Effects & Lighting has been promoted to Supervisor of Facilities.

Jim Nagy is pleased to announce that Jane Jackson, EPCOT Project Management, will assume the responsibility of Project Manager for the Japan Pavilion, Phase II.

Muppet creator, Jim Henson, has a new film to be released in December called **DARK CRYSTAL**. As part of the promotion for the new film he is presenting a display of designer Brian Froud's costumes and figures called **THE ART OF THE DARK CRYSTAL**, at the **CRAFT AND FOLK ART MUSEUM**, 5814 Wilshire Boulevard, across from the County Museum in Los Angeles.

Exhibit hours are 11:00 - 5:00, Tuesday through Sunday between October 20 and November 21. No charge.



These delightful drawings were found by a WED & MAPO employee at Disneyland. They were meant to be personally delivered and rest assured, they will find their way to Snow White and Mickey Mouse.

WED & MAPO IMAGINEWS
Vol. III, No. 21

Disney University, ext. 7627

Editor: Valerie Philbrick

Graphics & Typography: Cheryl Truss
Contributors:

WED & MAPO Mail Room

Studio Print Shop

Special Services

Front Cover: Al Mirabella